

Summer Home Estates Maintenance District Community Meeting

San Joaquin County
Department of Public Works

August 27, 2024



SAN JOAQUIN
— COUNTY —
Greatness grows here.

PUBLIC WORKS
San Joaquin County
Working for YOU

Agenda

- Department
- District Overviews
- Financial Situation
 - Income
 - Cost Drivers
 - Financial Status
- Proposed Rates
- Next Steps

What is a Special District

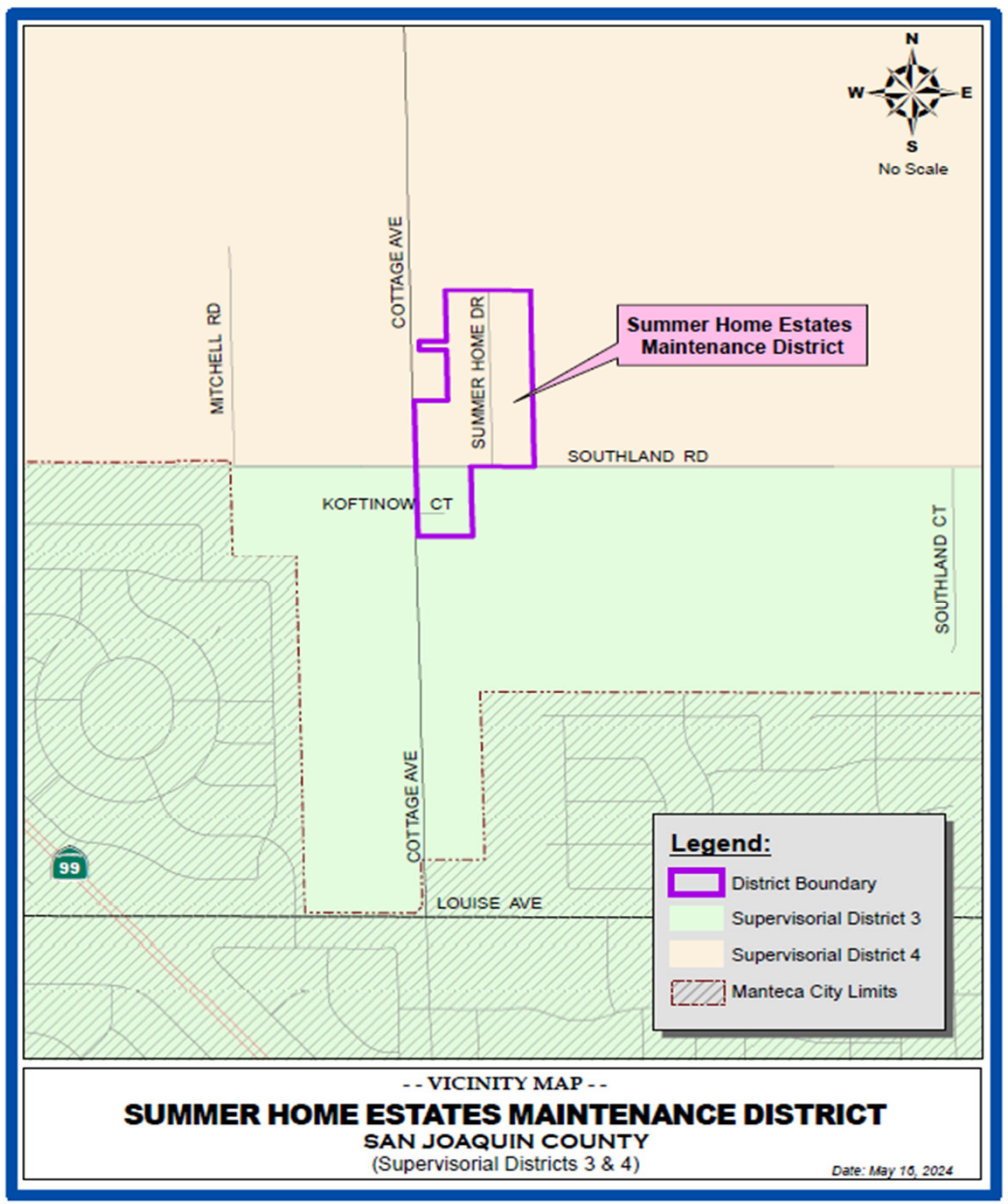
- Form of local government created to provide a specific service within defined boundary
- Separate fund from rest of the County
- Revenue from charges stays in the district, not spent for other purposes
- Must be generally self-supporting from customer charges – GENERAL FUND UNABLE TO SUBSIDIZE COSTS

San Joaquin County Public Works Department

- Administers over 100 special districts
- Services provided include water, sewer, storm drainage and street lighting
- Provides storm drain services to 51 special districts serving approximately 6,700 properties

Summer Home Estates Boundary

- Established in 1971
- 19 Properties Served
- Key Facilities:
 - 1 Storm Drain Lift Station
 - Over 700 LF of Storm Drain pipe



Current Rates

Summer Home Estates

- Storm drainage annual flat rate \$27 per single family home
- Charged on property tax bill
- No rate increase since district was formed

What Your Rates Pay For

Operation and maintenance of the systems

- Labor:
 - Staff for system operation and maintenance
 - Equipment repairs (storm pump repair)
 - Storm drain maintenance (clean catch basins)
 - Billing and administrative costs

Reason's for Recommendation

- County staff costs increased with inflation
- Proposed rate keeps up with materials & labor
- Continue to maintain reserves for future capital replacement as inflation increases
- Storm drainage service charges cover operating and administrative expenses
- 2022 storm drain pump station was repaired

Proposed Rates – Summer Home

- 2.6% inflationary increase proposed for FY 2024-2025
 - Keeps up with inflationary costs to power & labor
 - No loss to fund balance
- Yearly increase = \$0.68 per home (\$0.06 per month)
- Inflationary Adjustments until FY 2028-2029 may be applied

Current Rate annual per SFE	Proposed Rate annual per SFE
\$27	\$27.68



If Rates Are Not Approved

Without sufficient revenue, the County may need to impose cost saving measures. Measures may include:

- Reduce after-hours and weekend service calls
- Reduce regular maintenance of the system
- Postpone equipment replacement

Next Steps

- Public Hearing scheduled October 8, 2024
- Notices have been mailed
- Questions? Call or email:
 - Robert Davalos (209) 468-3697 or rdavalos@sjgov.org
- Visit your district website at:
www.sjgov.org/ud

Summer Home - Financial Status

10 Year Fund Balance History

