

County Service Area (CSA) 3 Zone A Tallahatchey Terrace Community Meeting

San Joaquin County
Department of Public Works

May 29, 2025



Agenda

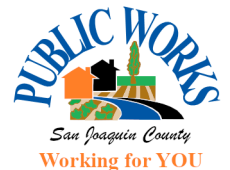
- Department
- District Overviews
- Financial Situation
 - Income
 - Cost Drivers
 - Financial Status
- Proposed Rates
- Next Steps

What is a Special District

- Form of local government created to provide a specific service within defined boundary
- Separate fund from rest of the County
- Revenue from charges stays in the district, not spent for other purposes
- Must be generally self-supporting from customer charges – GENERAL FUND UNABLE TO SUBSIDIZE COSTS

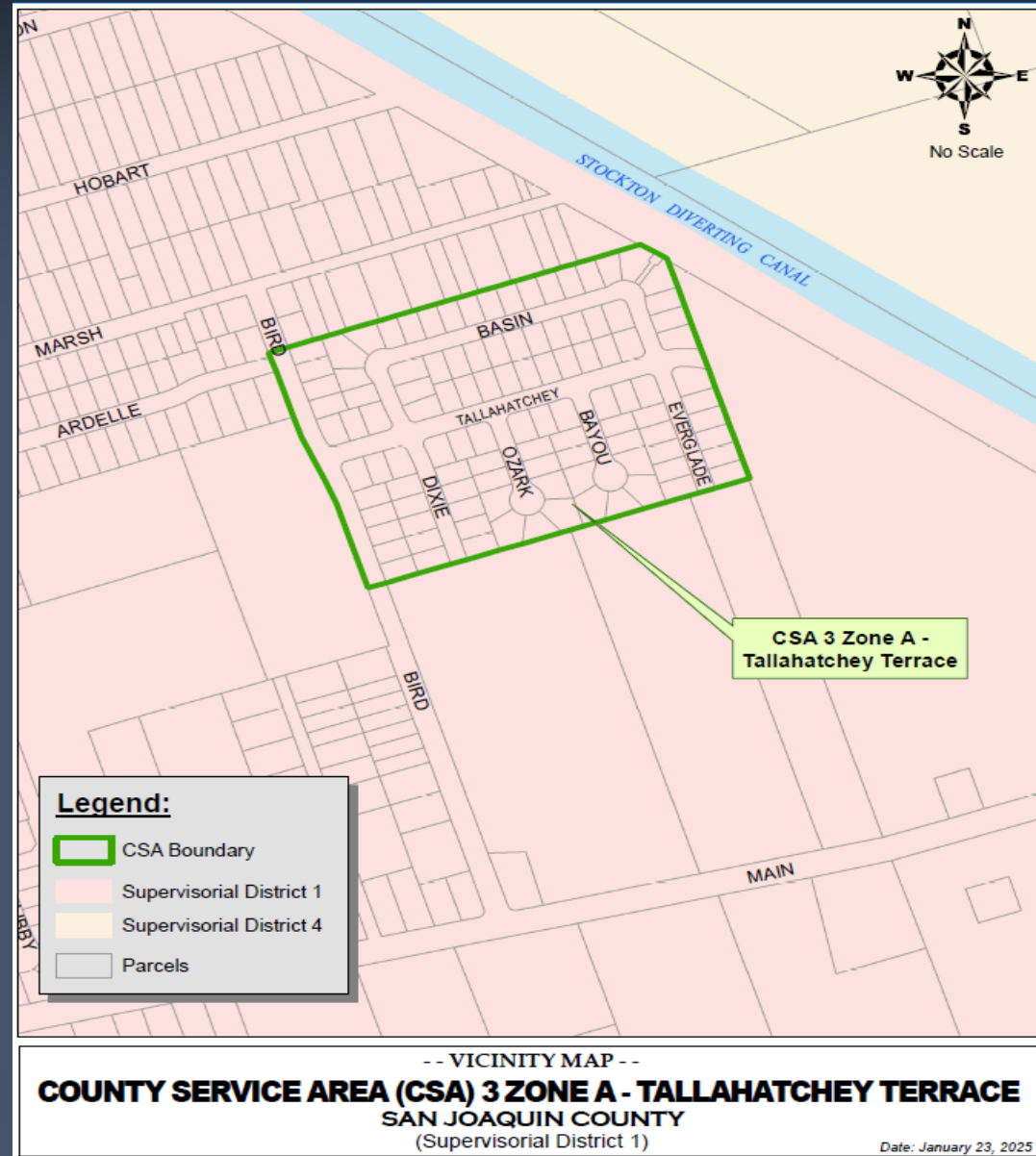
San Joaquin County Public Works Department

- Administers over 100 special districts
- Services provided include water, sewer, storm drainage and street lighting
- Provides storm drain services to 51 districts serving approximately 6,700 properties



CSA 3 Zone A Tallahatchey Terrace Boundary

- Established in 1965
- 107 Properties Served
- Key Facilities:
 - About ½ Mile of Storm Drain pipe
 - 1 Pump Station
 - 1 Portable Generator
 - 16 Catch Basins



Current Rates

CSA 3 Zone A

- Annual charge per Single Family Equivalent (SFE)
- Single family residential parcel = 1 SFE
- Current annual storm drain rate per single-family home: \$69.08 (\$5.75 per month)
- Current annual lighting rate per single-family home: \$43.48
- Charged on the property tax bill

What Your Rates Pay For

Operation and maintenance of the systems

■ Labor:

- Staff for system operation and maintenance
- Equipment repairs
- Drainage & Streetlight Maintenance
- Billing and administrative costs



Reason's for Recommendation

- County staff costs increased with inflation
- Proposed rate keeps up with materials & labor
- Continue to maintain reserves for future capital replacement as inflation increases
- Storm drain service charges cover operating and administrative expenses

Proposed Rates – CSA 3 Zone A Tallahatchey Terrace

- 2.6% inflationary increase proposed for FY 2025-2026
 - Keeps up with inflationary costs to power & labor
 - No loss to fund balance
- Yearly increase = \$1.90 per home (\$0.16 per month)
- Inflationary Adjustments until FY 2029-2030 may be applied

Current Rate annual per SFE	Proposed Rate annual per SFE
\$69.08	\$70.98

If Rates Are Not Approved

Without sufficient revenue, the County may need to impose cost saving measures. Measures may include:

- Reduce after-hours and weekend service calls
- Reduce regular maintenance of the system
- Postpone equipment replacement
- Localized flooding



Next Steps

- Public Hearing scheduled July 29, 2025
- Notices have been mailed
- Questions? Call or email:
 - Robert Davalos (209) 468-3697 or rdavalos@sjgov.org
- Visit your district website at:
www.sjgov.org/ud

