

Bowling Green Estates Maintenance District Community Meeting

**San Joaquin County
Department of Public Works**

May 29, 2025



Agenda

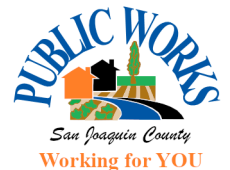
- Department
- District Overviews
- Financial Situation
 - Income
 - Cost Drivers
 - Financial Status
- Proposed Rates
- Next Steps

What is a Special District

- Form of local government created to provide a specific service within defined boundary
- Separate fund from rest of the County
- Revenue from charges stays in the district, not spent for other purposes
- Must be generally self-supporting from customer charges – GENERAL FUND UNABLE TO SUBSIDIZE COSTS

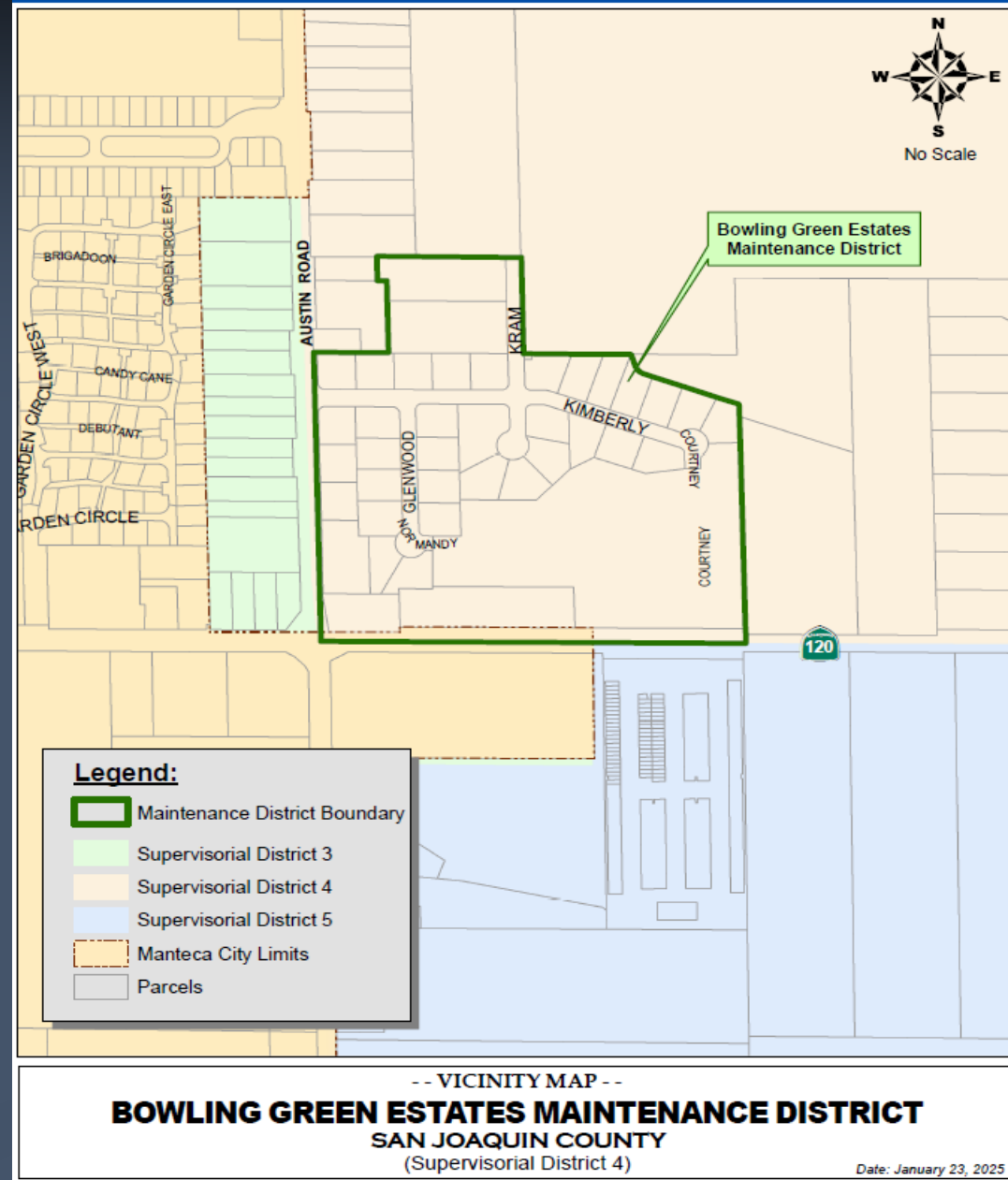
San Joaquin County Public Works Department

- Administers over 100 special districts
- Services provided include water, sewer, storm drainage and street lighting
- Provides storm drain services to 51 special districts serving approximately 6,700 properties



Bowling Green Estates Boundary

- Established in 1967
- 40 Properties Served
- Key Facilities:
 - 1 Storm Drain Lift Station
 - 5 Catch Basins
 - Over 1,700 LF of Storm Drain pipe



Current Rates

Bowling Green Estates

- Annual charge per Single Family Equivalent (SFE)
- Single family residential parcel = 1 SFE
- Storm drainage annual flat rate \$101 per single-family home
- Charged on the property tax bill

What Your Rates Pay For

Operation and maintenance of the systems

■ Labor:

- Staff for system operation and maintenance
- Equipment repairs (storm pump repair)
- Storm drain maintenance (clean catch basins)
- Billing and administrative costs



Reason's for Recommendation

- County staff costs increased with inflation
- Proposed rate keeps up with materials & labor
- Continue to maintain reserves for future capital replacement as inflation increases
- Storm drainage service charges cover operating and administrative expenses
- No assessment since 2022

Proposed Rates – Summer Home

- 2.76% inflationary increase proposed for FY 2025-2026
 - Keeps up with inflationary costs to power & labor
 - No loss to fund balance
- Yearly increase = \$2.78 per home (\$0.23 per month)
- Inflationary Adjustments until FY 2029-2030 may be applied

Current Rate annual per SFE	Proposed Rate annual per SFE
\$101	\$103.78

If Rates Are Not Approved

Without sufficient revenue, the County may need to impose cost-saving measures. Measures may include:

- Reduce after-hours and weekend service calls
- Reduce the regular maintenance of the system
- Postpone equipment replacement
- Localized flooding



Next Steps

- Public Hearing scheduled July 29, 2025
- Notices will be mailed by June 5, 2025
- Questions? Call or email:
 - Robert Davalos (209) 468-3697 or rdavalos@sjgov.org
- Visit your district website at:
www.sjgov.org/ud

