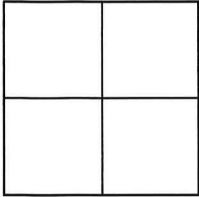


# CORNER RECORD

Agency Index

CR-25-081

Document Number

City of STOCKTONCounty of SAN JOAQUIN, CaliforniaBrief Legal Description BLOCK 137 EAST OF CENTER**CORNER TYPE**

- ☐ Government Corner ☐ Control  
☐ Meander ☒ Property  
☐ Rancho ☐ Other

Date of Survey 1/25/2025**COORDINATES (Optional)**

N. \_\_\_\_\_ E. \_\_\_\_\_

Elevation \_\_\_\_\_

Units Metric ☐ U.S. Survey Foot ☐

Horizontal Datum \_\_\_\_\_

Zone \_\_\_\_\_ Epoch Date \_\_\_\_\_

Vertical Datum \_\_\_\_\_

☐ Complies with Public Resources Code §§8801-8819☐ Complies with Public Resources Code §§8890-8902PLS Act Ref: ☐ 8765(d)☒ 8771☐ 8773☐ Other:Corner/Monument: ☒ Left as found☐ Established☐ Rebuilt☒ Pre-Construction☐ Found and tagged☐ Reestablished☐ Referenced☐ Post-Construction

Narrative of corner identified and monument as found, set, reset, replaced, or removed:

☒ See sheet #2 for description(s):

FOUND POINTS AS SHOWN ON PAGE 2. THIS POINT WAS REFERENCED PRIOR TO A CONSTRUCTION PROJECT IN THE VICINITY. THE TIES SHOWN HEREON ARE FOR THE PURPOSE OF PERPETUATING FOUND MONUMENTATION. NO CLAIM IS MADE AS TO THE RELATIONSHIP OF THE POINTS OR LINES SHOWN HEREON TO TRUE BOUNDARY LOCATION.

**SURVEYOR'S STATEMENT**

This Corner Record was prepared by me or under my direction in conformance with the Professional Land Surveyors' Act on 1/25/2025

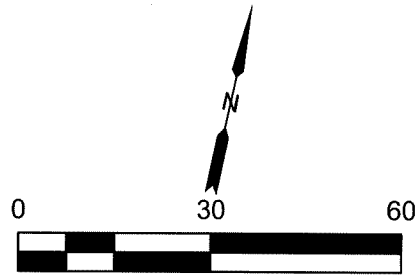
Signed [Signature] P.L.S. or R.C.E. No. LS 9384**COUNTY SURVEYOR'S STATEMENT**

This Corner Record was received February 20, 2025  
and examined and filed February 24, 2025

Signed James E. Hart P.L.S. or R.C.E. No. 8657Title County Surveyor

County Surveyor's Comment

ROSE ST



# LEGEND

These standard symbols will be found in the drawing.

SET 1/2" BRASS TAG MARKED R.P. LS 9384

BOUNDARY LINE

TIE LINE

EDGE OF SIDEWALK

FACE OF CURB

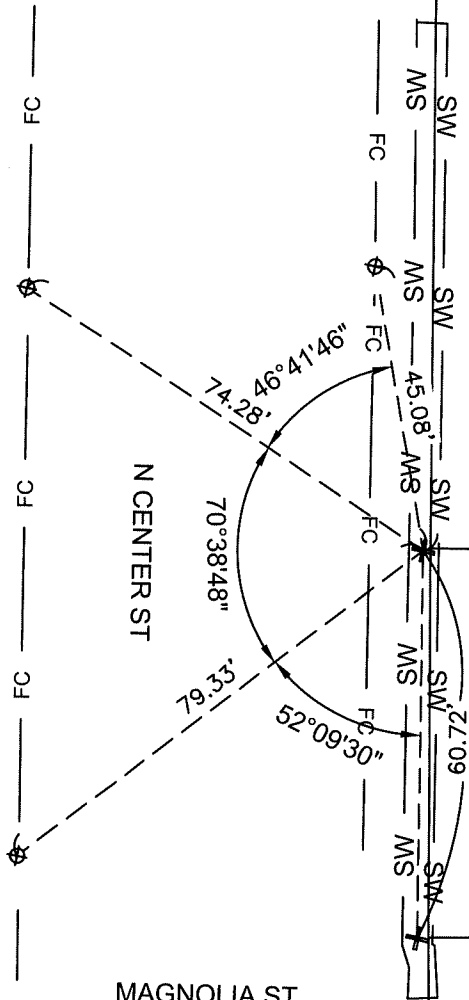
FOUND CUT X NO RECORD

ASSESSOR PARCEL NUMBER APN

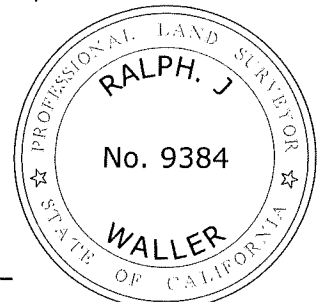
APN: 139-030-62  
1146 N CENTER ST

APN: 139-030-50  
1118 N CENTER ST

APN: 139-030-52  
1112 N CENTER ST



MAGNOLIA ST



DISTANCES ARE IN FEET AND DECIMAL THERE OF.