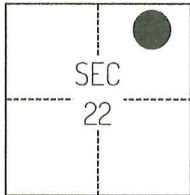


CORNER RECORD

Agency Index

CR-25-065

Document Number

City of STOCKTON County of SAN JOAQUIN, CaliforniaBrief Legal Description FOUND MONUMENTS NEAR THE EASTERN SIDE OF GEORGIA AVENUE, CR 24-228, SAN JOAQUIN COUNTY SURVEYOR'S RECORDS.**CORNER TYPE****COORDINATES (Optional)**

TIN/R6E

- ☐ Government Corner ☐ Control
☐ Meander ☒ Property
☐ Rancho ☐ Other

Date of Survey June 9, 2024

N. _____ E. _____

Elevation _____

Units ☐ Metric ☒ U.S. Survey Foot

Horizontal Datum _____

Zone _____ Epoch Date _____

Vertical Datum _____

☐ Complies with Public Resources Code §§8801-8819☐ Complies with Public Resources Code §§8890-8902

PLS Act Ref.:

☐ 8765(d)☒ 8771☐ 8773☐ Other:Corner/
Monument:☒ Left as found☐ Established☐ Rebuilt☒ Pre-Construction☐ Found and tagged☐ Reestablished☒ Referenced☐ Post-Construction

Narrative of corner identified and monument as found, set, reset, replaced, or removed:

☒ See sheet #2 for description(s):

THE FOUND MONUMENTS SHOWN ON THIS CORNER RECORD WERE FOUND IN THE APPROXIMATE LOCATION OF THE CORNER(S) ON CORNER RECORD 24-228, SAN JOAQUIN COUNTY SURVEYOR'S RECORDS. I DID NOT VERIFY THE IDENTITY AND VALIDITY OF THE MONUMENT FOUND AS ACTUALLY MARKING THE PROPERTY CORNER.

SURVEYOR'S STATEMENT

This Corner Record was prepared by me or under my direction in conformance with

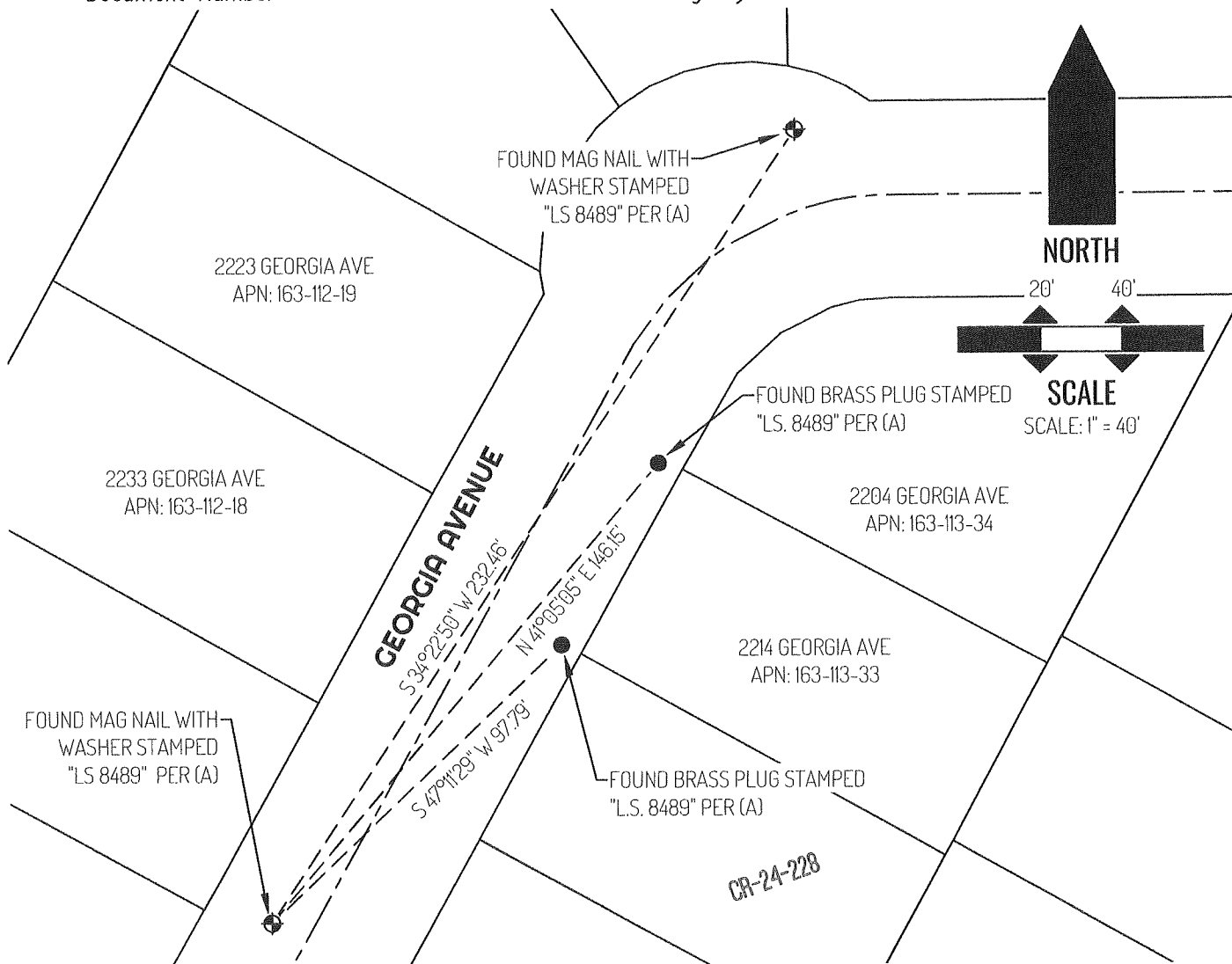
the Professional Land Surveyors' Act on September 11, 2024Signed Scott L. Blake P.L.S. or R.C.E. No. 8489**COUNTY SURVEYOR'S STATEMENT**This Corner Record was received February 18, 2025and examined and filed February 24, 2025Signed James E. Hart P.L.S. or R.C.E. No. 8657Title County Surveyor

County Surveyor's Comment



Document Number

Agency Index



LEGEND

●	FOUND MONUMENTS AS NOTED
⊕	FOUND CONTROL POINT AS NOTED
2204	REFERENCE STREET ADDRESS
CR	CORNER RECORD, SAN JOAQUIN COUNTY
APN	SURVEYOR'S RECORDS
---	TAX ASSESSOR PARCEL NUMBER
---	TIE LINE
---	LOT LINE
---	RIGHT-OF-WAY CENTERLINE

SURVEYOR NOTE

THIS CORNER RECORD IS BEING FILED TO FULFILL THE PRE-CONSTRUCTION MONUMENT PRESERVATION REQUIREMENTS OF SECTION 8771 OF THE CALIFORNIA BUSINESS AND PROFESSIONS CODE. IT IS NOT THE RESULT OF A FULLY RESOLVED BOUNDARY SURVEY FOR ANY PARCEL OF REAL PROPERTY.

REFERENCE

(A) CORNER RECORD 24-228, SAN JOAQUIN COUNTY SURVEYOR'S RECORDS