

CORNER RECORD

Agency Index CR-25-057

Document Number _____

City of LATHROP

County of SAN JOAQUIN, California

Brief Legal Description INTERSECTION OF JONQUIL DRIVE AND HOLLYHOCK COURT



T.1S., R.6E.

CORNER TYPE

- Government Corner
- Meander
- Rancho
- Control
- Property
- Other

Date of Survey 10-09-2024

COORDINATES (Optional)

N. _____ E. _____

Elevation _____

Units Metric U.S. Survey Foot

Horizontal Datum _____

Zone _____ Epoch Date _____

Vertical Datum _____

Complies with Public Resources Code §§8801-8819

Complies with Public Resources Code §§8890-8902

PLS Act Ref: 8765(d) 8771 8773 Other:

Corner/Monument: Left as found Established Rebuilt Pre-Construction
 Found and tagged Reestablished Referenced Post-Construction

Narrative of corner identified and monument as found, set, reset, replaced, or removed:

See sheet #2 for description (s):

FOUND ONE (1) PK NAIL WITH SHINER; FOUND ONE (1) 3/4" IRON PIPE TAGGED LS 4876 IN MONUMENT WELL PER (R2); SET FOUR (4) CONCRETE NAILS WITH BRASS TAG "LS 9857" AS WITNESS CORNERS, ALL AS SHOWN ON SHEET 2.

SURVEYOR'S STATEMENT

This Corner Record was prepared by me or under my direction in conformance with the Professional Land Surveyors' Act on FEBRUARY 4, 2025

Signed Tanya Cissell P.L.S. or R.C.E. No. 9857



COUNTY SURVEYOR'S STATEMENT

This Corner Record was received February 5, 2025

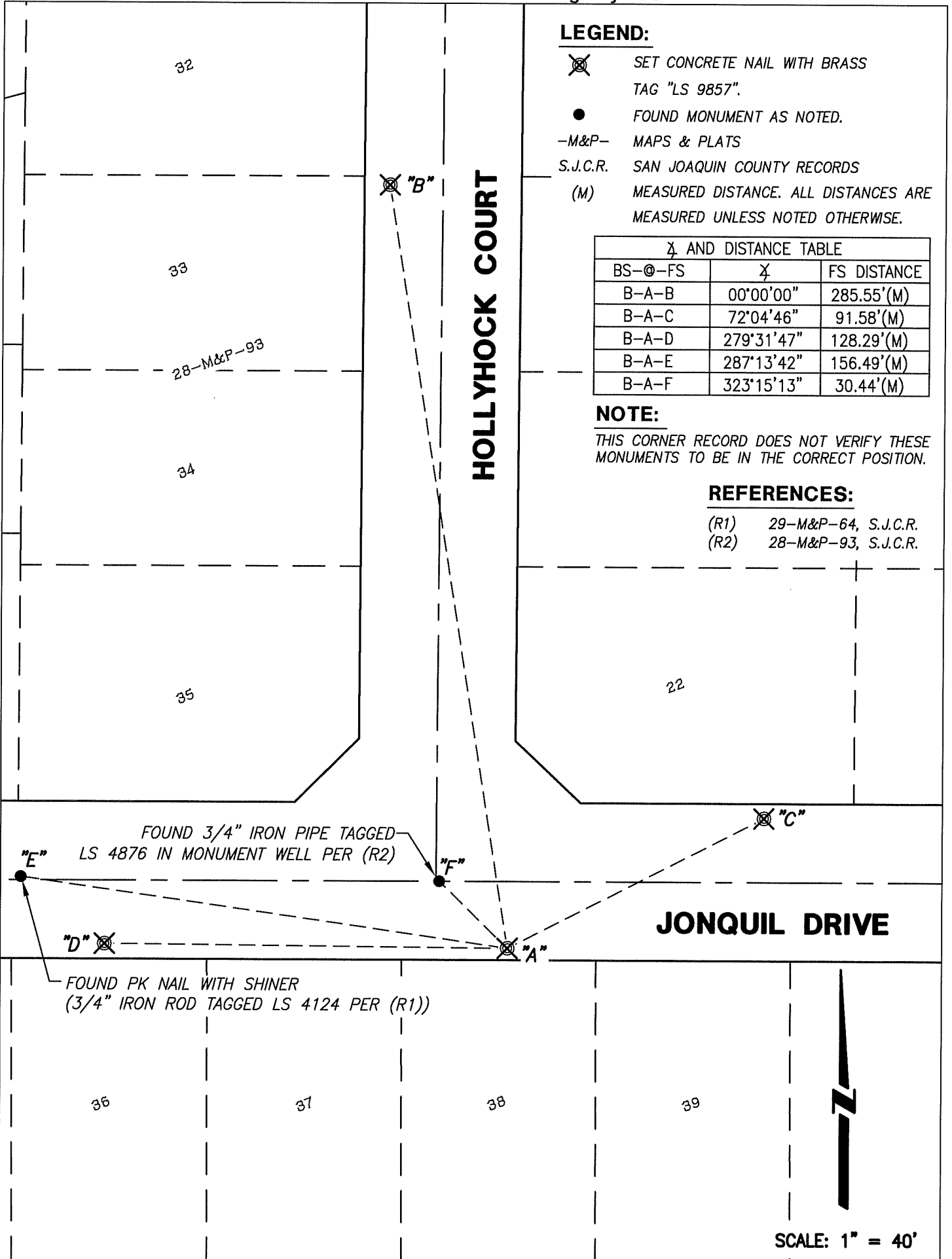
and examined and filed February 11, 2025

Signed James E. Hart P.L.S. or R.C.E. No. 8657

Title County Surveyor



County Surveyor's Comment _____



LEGEND:

- ⊗ SET CONCRETE NAIL WITH BRASS TAG "LS 9857".
- FOUND MONUMENT AS NOTED.
- M&P- MAPS & PLATS
- S.J.C.R. SAN JOAQUIN COUNTY RECORDS
- (M) MEASURED DISTANCE. ALL DISTANCES ARE MEASURED UNLESS NOTED OTHERWISE.

B AND DISTANCE TABLE		
BS-@-FS	B	FS DISTANCE
B-A-B	00°00'00"	285.55'(M)
B-A-C	72°04'46"	91.58'(M)
B-A-D	279°31'47"	128.29'(M)
B-A-E	287°13'42"	156.49'(M)
B-A-F	323°15'13"	30.44'(M)

NOTE:

THIS CORNER RECORD DOES NOT VERIFY THESE MONUMENTS TO BE IN THE CORRECT POSITION.

REFERENCES:

- (R1) 29-M&P-64, S.J.C.R.
- (R2) 28-M&P-93, S.J.C.R.

FOUND 3/4" IRON PIPE TAGGED LS 4876 IN MONUMENT WELL PER (R2)

FOUND PK NAIL WITH SHINER (3/4" IRON ROD TAGGED LS 4124 PER (R1))

SCALE: 1" = 40'