

# CORNER RECORD

Agency Index CR-25-056

Document Number \_\_\_\_\_

City of LATHROP

County of SAN JOAQUIN, California

Brief Legal Description INTERSECTION OF JONQUIL DRIVE AND POPPY COURT



T.1S., R.6E.

### CORNER TYPE

- Government Corner
- Meander
- Rancho
- Control
- Property
- Other

Date of Survey 10-09-2024

### COORDINATES (Optional)

N. \_\_\_\_\_ E. \_\_\_\_\_  
 Elevation \_\_\_\_\_  
 Units  Metric  U.S. Survey Foot  
 Horizontal Datum \_\_\_\_\_  
 Zone \_\_\_\_\_ Epoch Date \_\_\_\_\_  
 Vertical Datum \_\_\_\_\_

- Complies with Public Resources Code §§8801-8819
- Complies with Public Resources Code §§8890-8902

PLS Act Ref:  8765(d)  8771  8773  Other:

Corner/Monument:  Left as found  Established  Rebuilt  Pre-Construction  
 Found and tagged  Reestablished  Referenced  Post-Construction

Narrative of corner identified and monument as found, set, reset, replaced, or removed:  
 See sheet #2 for description (s):

FOUND ONE (1) 3/4" IRON PIPE TAGGED LS 4876 IN MONUMENT WELL PER (R1); SET FOUR (4) CONCRETE NAILS WITH BRASS TAG "LS 9857" AS WITNESS CORNERS, ALL AS SHOWN ON SHEET 2.

### SURVEYOR'S STATEMENT

This Corner Record was prepared by me or under my direction in conformance with the Professional Land Surveyors' Act on FEBRUARY 4, 2025

Signed Tanya Cissell P.L.S. or R.C.E. No. 9857

### COUNTY SURVEYOR'S STATEMENT

This Corner Record was received February 5, 2025

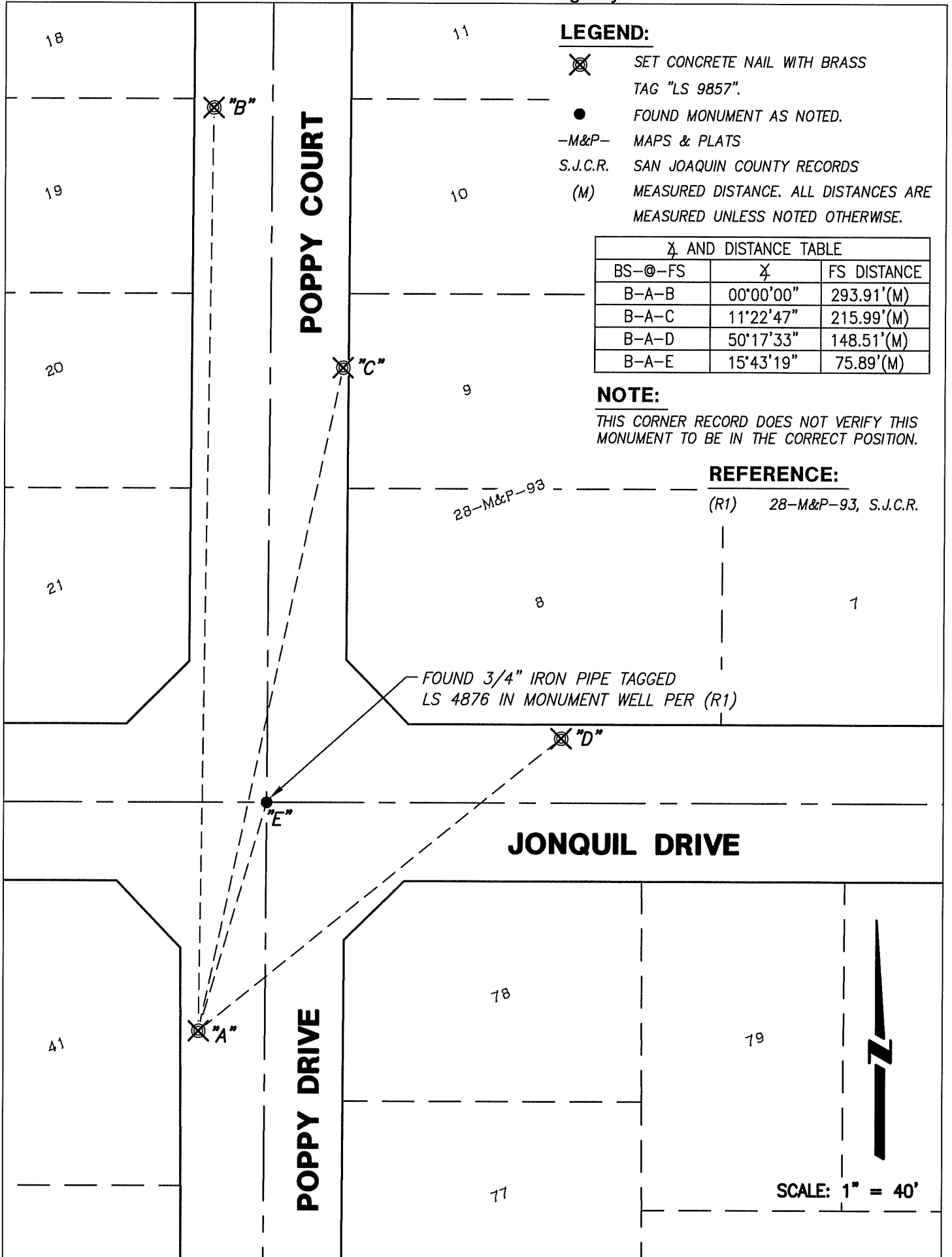
and examined and filed February 11, 2025

Signed James E. Hart P.L.S. or R.C.E. No. 8657

Title County Surveyor

County Surveyor's Comment \_\_\_\_\_  
\_\_\_\_\_  
\_\_\_\_\_





**LEGEND:**

- ⊗ SET CONCRETE NAIL WITH BRASS TAG "LS 9857".
- FOUND MONUMENT AS NOTED.
- M&P- MAPS & PLATS
- S.J.C.R. SAN JOAQUIN COUNTY RECORDS
- (M) MEASURED DISTANCE. ALL DISTANCES ARE MEASURED UNLESS NOTED OTHERWISE.

Bearing and Distance Table		
BS-@-FS	Bearing	FS DISTANCE
B-A-B	00°00'00"	293.91'(M)
B-A-C	11°22'47"	215.99'(M)
B-A-D	50°17'33"	148.51'(M)
B-A-E	15°43'19"	75.89'(M)

**NOTE:**

THIS CORNER RECORD DOES NOT VERIFY THIS MONUMENT TO BE IN THE CORRECT POSITION.

**REFERENCE:**

(R1) 28-M&P-93, S.J.C.R.

FOUND 3/4" IRON PIPE TAGGED LS 4876 IN MONUMENT WELL PER (R1)