

CORNER RECORD

Agency Index CR-25-053

Document Number _____

City of MANTECA

County of SAN JOAQUIN, California

Brief Legal Description INTERSECTION OF MAIN STREET AND JASON STREET



T.1S., R.7E.

CORNER TYPE

- Government Corner
- Meander
- Rancho
- Control
- Property
- Other

Date of Survey 1/30/2025

COORDINATES (Optional)

N. _____ E. _____

Elevation _____

Units Metric U.S. Survey Foot

Horizontal Datum _____

Zone _____ Epoch Date _____

Vertical Datum _____

Complies with Public Resources Code §§8801-8819

Complies with Public Resources Code §§8890-8902

PLS Act Ref: 8765(d) 8771 8773 Other:

Corner/Monument: Left as found Established Rebuilt Pre-Construction
 Found and tagged Reestablished Referenced Post-Construction

Narrative of corner identified and monument as found, set, reset, replaced, or removed:

See sheet #2 for description (s):

FOUND ONE (1) 3/4" IRON PIPE, TAG ILLEGIBLE; SET FOUR (4) CONCRETE NAILS WITH BRASS TAG "LS 9857" AS WITNESS CORNERS, ALL AS SHOWN ON SHEET 2.

SURVEYOR'S STATEMENT

This Corner Record was prepared by me or under my direction in conformance with the Professional Land Surveyors' Act on FEBRUARY 4, 2025

Signed Tanya Cissell P.L.S. or R.C.E. No. 9857

COUNTY SURVEYOR'S STATEMENT

This Corner Record was received February 5, 2025

and examined and filed February 13, 2025

Signed James E. Hart P.L.S. or R.C.E. No. 8657

Title County Surveyor

County Surveyor's Comment _____



LEGEND:

- ⊗ SET CONCRETE NAIL WITH BRASS TAG "LS 9857".
- FOUND MONUMENT AS NOTED.
- M&P- MAPS & PLATS
- PM- PARCEL MAPS
- S.J.C.R. SAN JOAQUIN COUNTY RECORDS
- (M) MEASURED DISTANCE. ALL DISTANCES ARE MEASURED UNLESS NOTED OTHERWISE.

¼ AND DISTANCE TABLE		
BS-@-FS	¼	FS DISTANCE
C-A-C	00°00'00"	186.24'(M)
C-A-B	359°54'59"	93.03'(M)
C-A-D	81°55'16"	45.77'(M)
C-A-E	131°57'09"	98.83'(M)

NOTE:

THIS CORNER RECORD DOES NOT VERIFY THIS MONUMENT TO BE IN THE CORRECT POSITION.

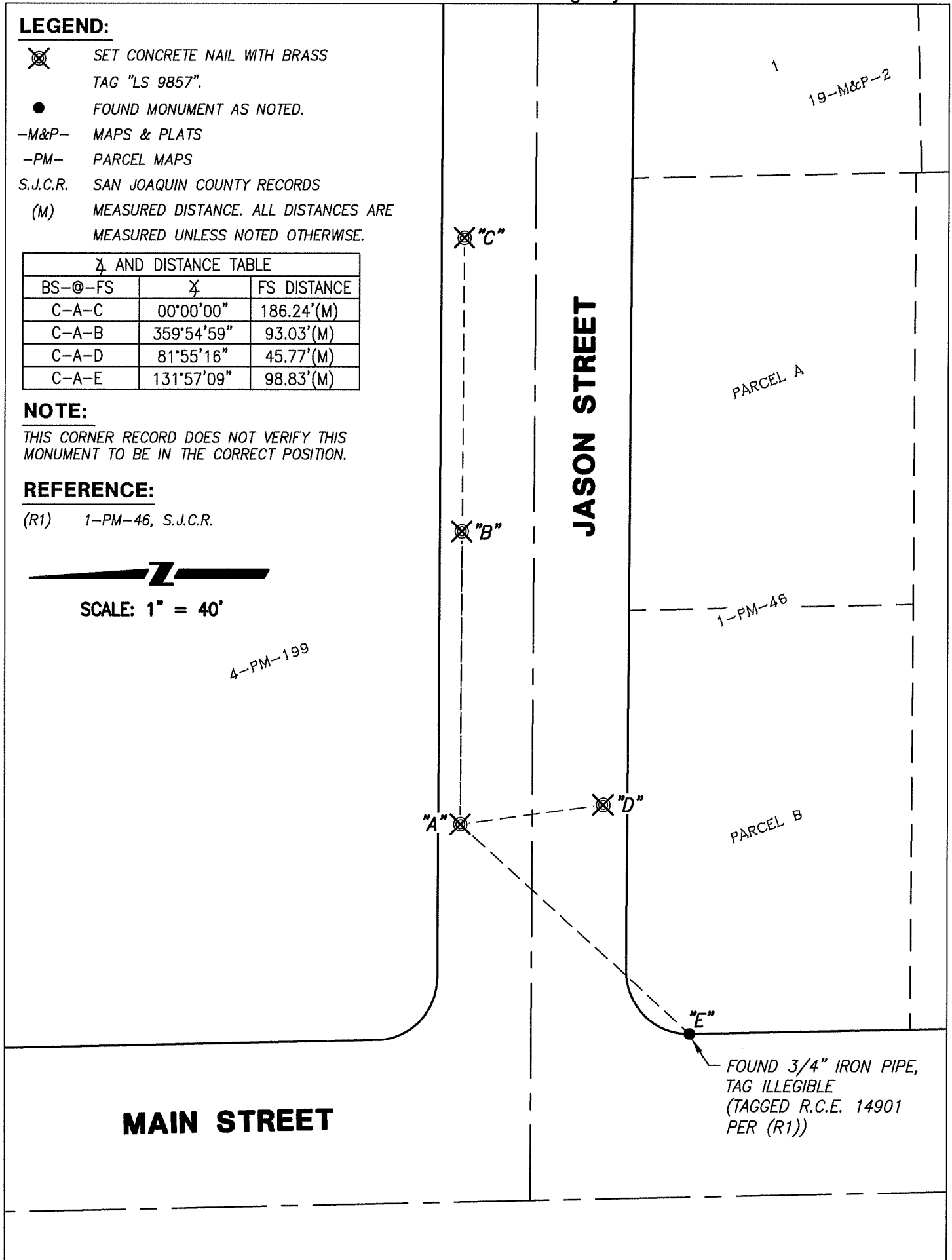
REFERENCE:

(R1) 1-PM-46, S.J.C.R.



SCALE: 1" = 40'

4-PM-199



FOUND 3/4" IRON PIPE,
TAG ILLEGIBLE
(TAGGED R.C.E. 14901
PER (R1))