

CORNER RECORD

Agency Index CR-25-052

Document Number _____

City of MANTECA

County of SAN JOAQUIN, California

Brief Legal Description INTERSECTION OF MAIN STREET AND CHEYENNE STREET



T.1S., R.7E.

CORNER TYPE

- Government Corner
- Meander
- Rancho
- Control
- Property
- Other

Date of Survey 1/30/2025

COORDINATES (Optional)

N. _____ E. _____

Elevation _____

Units Metric U.S. Survey Foot

Horizontal Datum _____

Zone _____ Epoch Date _____

Vertical Datum _____

Complies with Public Resources Code §§8801-8819

Complies with Public Resources Code §§8890-8902

PLS Act Ref: 8765(d) 8771 8773 Other:

Corner/Monument: Left as found Established Rebuilt Pre-Construction

Found and tagged Reestablished Referenced Post-Construction

Narrative of corner identified and monument as found, set, reset, replaced, or removed:

See sheet #2 for description (s):

FOUND ONE (1) 3/4" IRON PIPE IN MONUMENT WELL TAGGED LS 8159 PER (R1); SET FOUR (4) CONCRETE NAILS WITH BRASS TAG "LS 9857" AS WITNESS CORNERS, ALL AS SHOWN ON SHEET 2.

SURVEYOR'S STATEMENT

This Corner Record was prepared by me or under my direction in conformance with the Professional Land Surveyors' Act on FEBRUARY 4, 2025

Signed Janya Cissell P.L.S. or R.C.E. No. 9857

COUNTY SURVEYOR'S STATEMENT

This Corner Record was received February 5, 2025

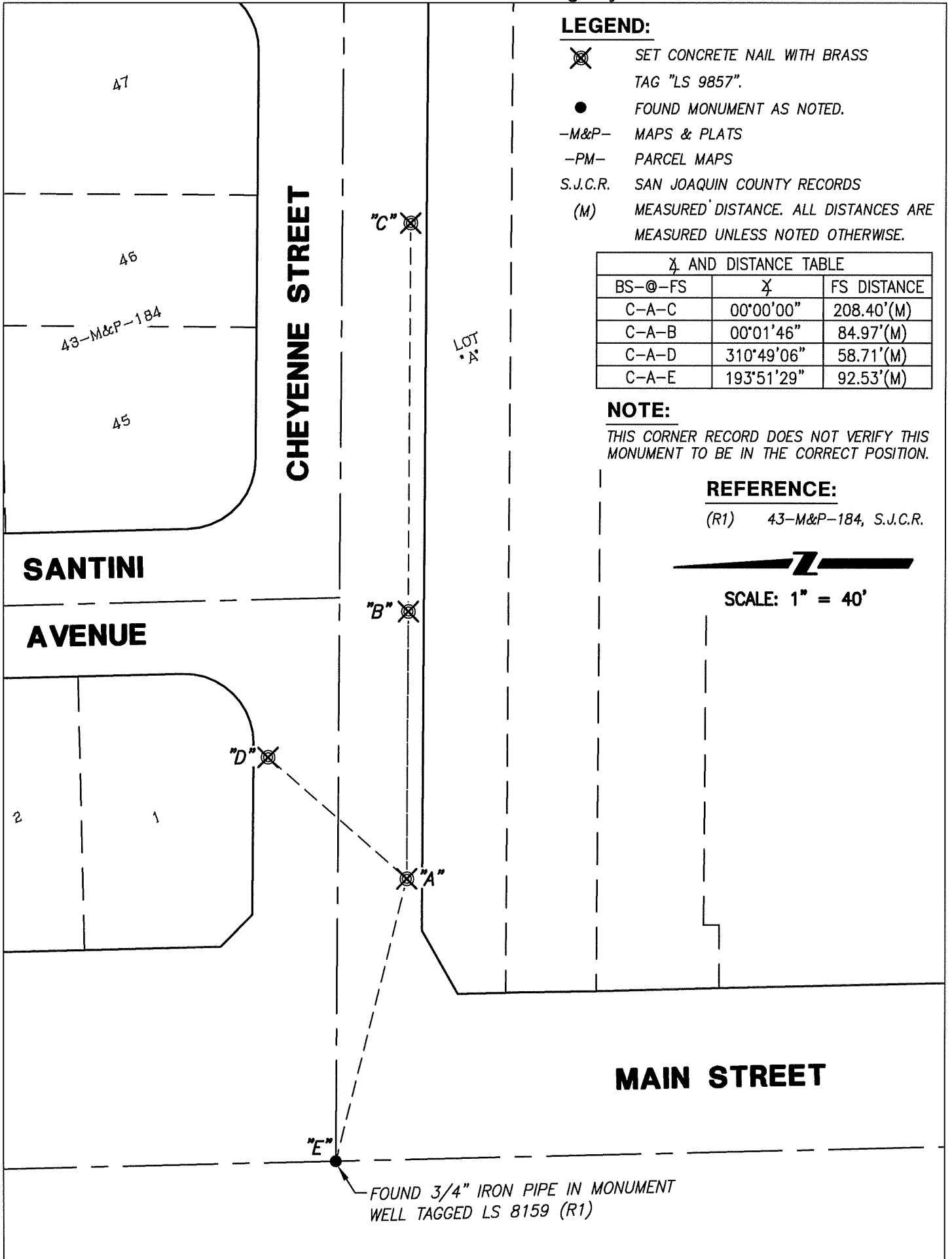
and examined and filed February 13, 2025

Signed James E. Hart P.L.S. or R.C.E. No. 8657

Title County Surveyor

County Surveyor's Comment _____





LEGEND:

- ⊗ SET CONCRETE NAIL WITH BRASS TAG "LS 9857".
- FOUND MONUMENT AS NOTED.
- M&P- MAPS & PLATS
- PM- PARCEL MAPS
- S.J.C.R. SAN JOAQUIN COUNTY RECORDS
- (M) MEASURED DISTANCE. ALL DISTANCES ARE MEASURED UNLESS NOTED OTHERWISE.

Bearing and Distance Table		
BS-@-FS	Bearing	FS DISTANCE
C-A-C	00°00'00"	208.40'(M)
C-A-B	00°01'46"	84.97'(M)
C-A-D	310°49'06"	58.71'(M)
C-A-E	193°51'29"	92.53'(M)

NOTE:

THIS CORNER RECORD DOES NOT VERIFY THIS MONUMENT TO BE IN THE CORRECT POSITION.

REFERENCE:

(R1) 43-M&P-184, S.J.C.R.



SCALE: 1" = 40'