

CORNER RECORD

Agency Index CR-25-047

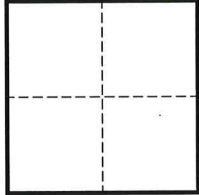
Document Number _____

City of _____ County of SAN JOAQUIN, California

Brief Legal Description MONUMENT AT THE CENTERLINE INTERSECTION OF SINCLAIR AVE & FARMINGTON RD

CORNER TYPE

COORDINATES (Optional)



- Government Corner
- Meander
- Rancho
- Control
- Property
- Other

N. _____ E. _____

Elevation _____

Units Metric U.S. Survey Foot

Horizontal Datum _____

Zone _____ Epoch Date _____

Vertical Datum _____

Complies with Public Resources Code §§8801-8819

Complies with Public Resources Code §§8890-8902

PLS Act Ref.: 8765(d) 8771 8773 Other:

Corner/Monument: Left as found Established Rebuilt Pre-Construction

Found and tagged Reestablished Referenced Post-Construction

Narrative of corner identified and monument as found, set, reset, replaced, or removed:

See sheet #2 for description(s):

FOUND 3-1/2" BRASS DISK STAMPED "CITY OF STOCKTON SURVEY MONUMENT 14S-21 LS 6670", IN MONUMENT WELL, AT THE CENTERLINE INTERSECTION OF SINCLAIR AVENUE & FARMINGTON ROAD, PER BOOK 35 OF SURVEYS AT PAGE 5, SAN JOAQUIN COUNTY RECORDS.

MONUMENT WAS REFERENCED PRIOR TO THE START OF CONSTRUCTION PROJECT IN THE VICINITY.

SURVEYOR'S STATEMENT

This Corner Record was prepared by me or under my direction in conformance with

the Professional Land Surveyors' Act on NOVEMBER 6, 2024

Signed [Signature] P.L.S. or R.C.E. No. 6868



COUNTY SURVEYOR'S STATEMENT

This Corner Record was received January 31, 2025

and examined and filed February 4, 2025

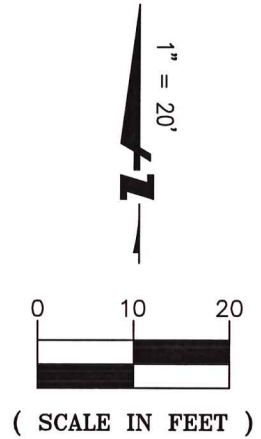
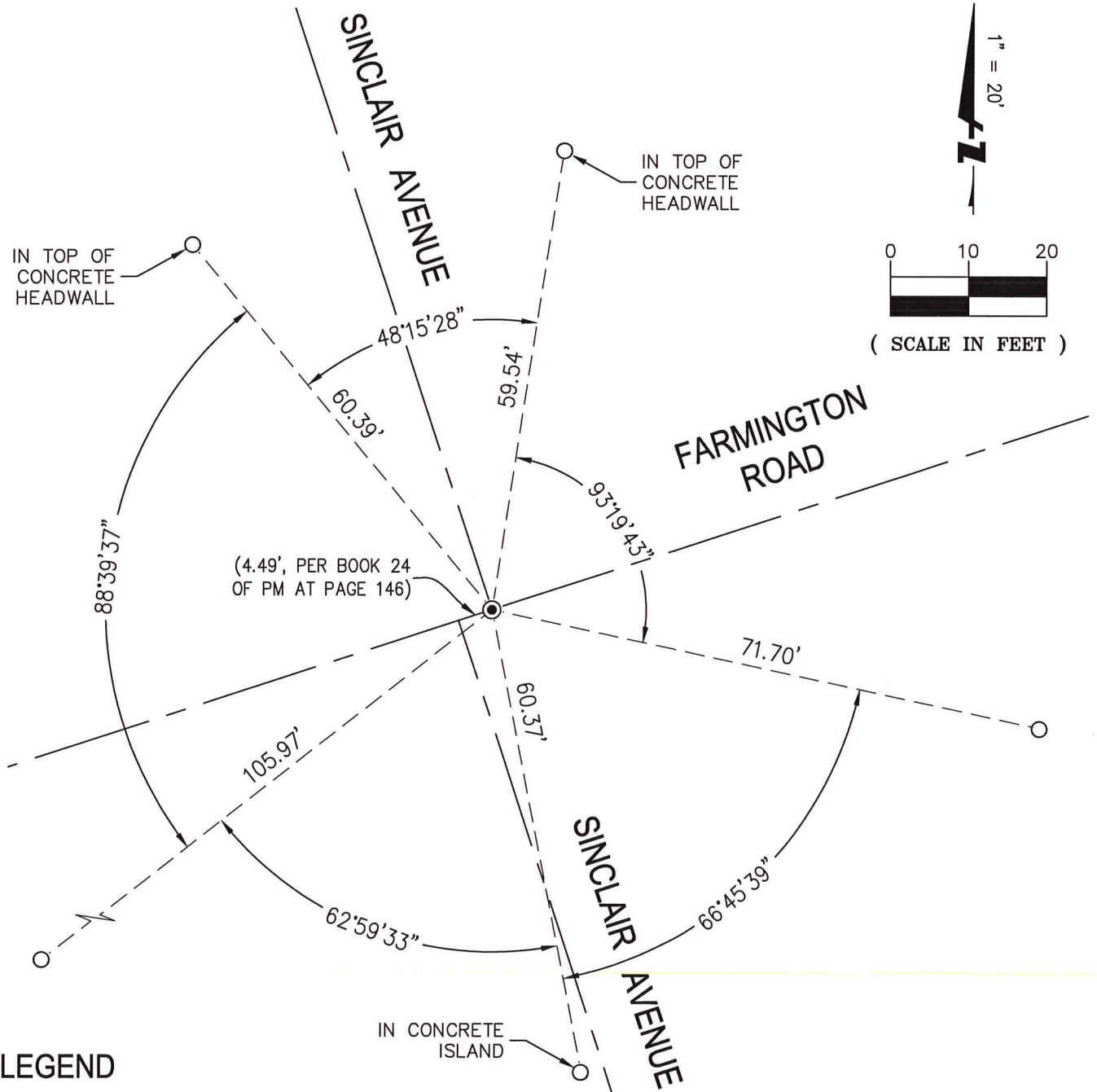
Signed James E. Hart P.L.S. or R.C.E. No. 8657

Title County Surveyor



County Surveyor's Comment

[Empty dashed box for County Surveyor's Comment]



LEGEND

- FOUND 3-1/2" BRASS DISK STAMPED "CITY OF STOCKTON SURVEY MONUMENT 14S-21 LS 6670", IN MONUMENT WELL, PER BOOK 35 OF SURVEYS AT PAGE 5, SAN JOAQUIN COUNTY RECORDS.
- SET MAG NAIL & WASHER STAMPED "BKF SURVEY PLS 6868" IN TOP OF CONCRETE CURB, UNLESS OTHERWISE NOTED
- PM PARCEL MAP, SAN JOAQUIN COUNTY RECORDS

K: 20191483_MON_PRES_SUR(DWG)_367_4339FARMINGTONRD_367_CR_4339FARMINGTONRD_PRE.DWG



1730 N. FIRST STREET
 SUITE 600
 SAN JOSE, CA 95112
 (408) 467-9100
 www.bkf.com

SUBJECT PRE-CONSTRUCTION CORNER RECORD
SINCLAIR AVE AND FARMINGTON RD

JOB NO. 20191483 - MON PRESERVATION
 BY RDV APPR. JML DATE 11-06-2024