

CORNER RECORD

Agency Index CR-25-046

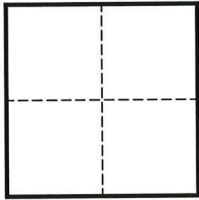
Document Number _____

City of STOCKTON County of SAN JOAQUIN California

Brief Legal Description CUT 'X' ALONG THE LOT LINE PRODUCTION BETWEEN 2321 & 2315 BONNIEBROOK DR

CORNER TYPE

COORDINATES (Optional)



- Government Corner
- Meander
- Rancho
- Control
- Property
- Other

N. _____ E. _____

Elevation _____

Units Metric U.S. Survey Foot

Horizontal Datum _____

Zone _____ Epoch Date _____

Vertical Datum _____

Date of Survey AUGUST 4, 2024

Complies with Public Resources Code §§8801-8819

Complies with Public Resources Code §§8890-8902

PLS Act Ref.: 8765(d) 8771 8773 Other:

Corner/Monument: Left as found Established Rebuilt Pre-Construction
 Found and tagged Reestablished Referenced Post-Construction

Narrative of corner identified and monument as found, set, reset, replaced, or removed:

See sheet #2 for description(s):

FOUND CUT 'X' IN CONCRETE SIDEWALK, NO REFERENCE, LOCATED ALONG THE PRODUCTION OF THE LOT LINE BETWEEN 2321 & 2315 BONNIEBROOK DR

THE POINT WAS REFERENCED PRIOR TO THE START OF A WATERLINE CONSTRUCTION PROJECT BY WEST VALLEY CONSTRUCTION CO.

SURVEYOR'S STATEMENT

This Corner Record was prepared by me or under my direction in conformance with the Professional Land Surveyors' Act on DECEMBER 5, 2024

Signed [Signature] P.L.S. or R.C.E. No. 6868



COUNTY SURVEYOR'S STATEMENT

This Corner Record was received January 31, 2025

and examined and filed February 4, 2025

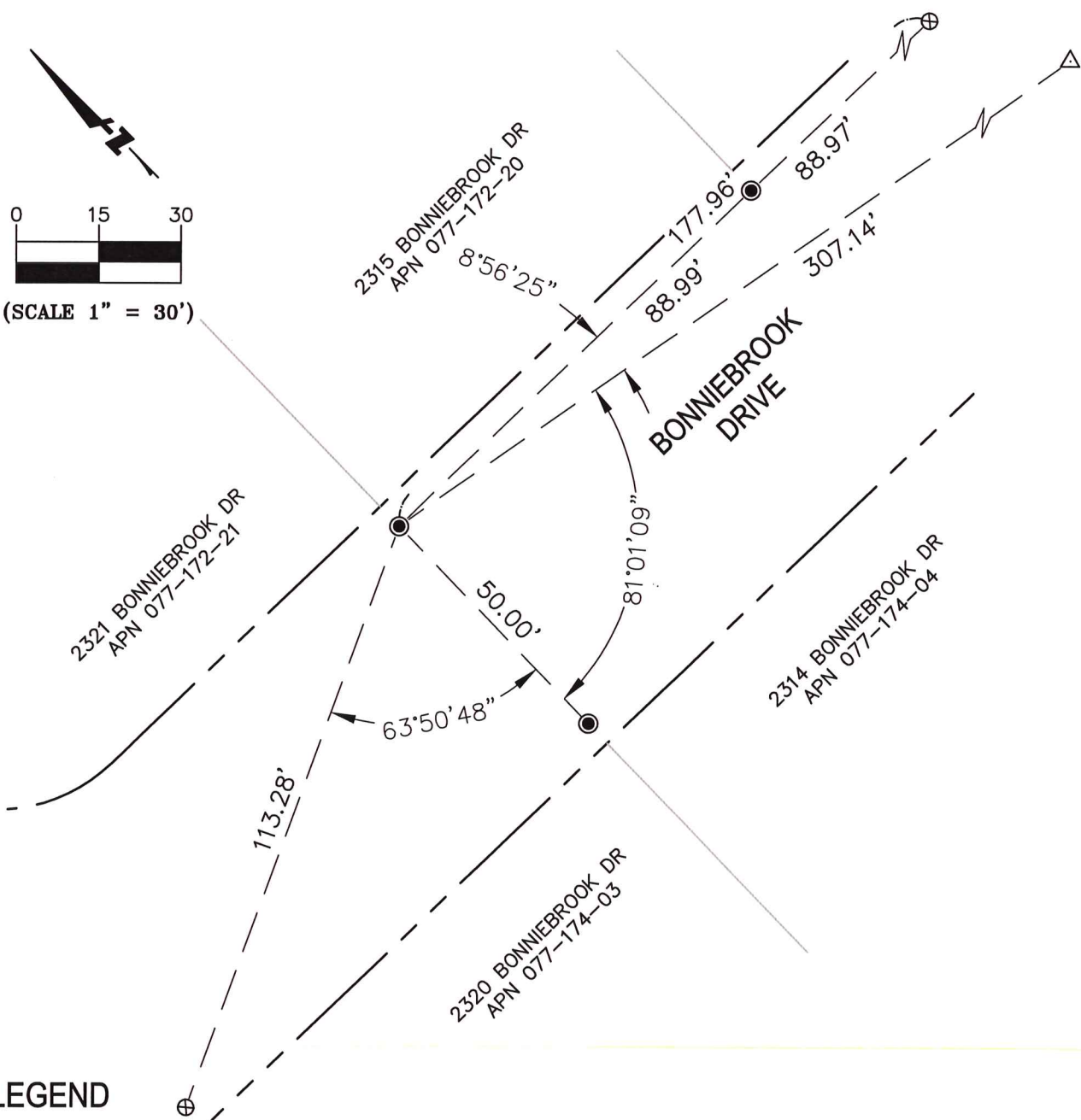
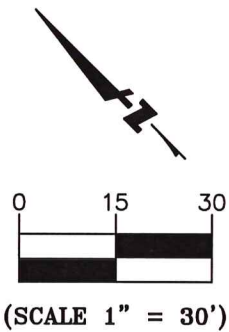
Signed James E. Hart P.L.S. or R.C.E. No. 8657

Title County Surveyor



County Surveyor's Comment

[Empty dashed box for County Surveyor's Comment]



LEGEND

- FOUND CUT 'X' IN CONCRETE SIDEWALK, NO REFERENCE, TO BE PRESERVED DURING CONSTRUCTION
 - ⊕ FOUND CUT 'X' IN CONCRETE SIDEWALK, NO REFERENCE, TIED OUT AS A REFERENCE POINT FOR THIS CORNER RECORD
 - △ SET MAG AND WASHER STAMPED "PLS 6868" AT BACK OF ROLL CURB.
- APN ASSESSOR'S PARCEL NUMBER



1730 N. FIRST STREET
 SUITE 600
 SAN JOSE, CA 95112
 408-467-9100
 www.bkf.com

Subject PRE-CONSTRUCTION CORNER RECORD
AT 2321 & 2315 BONNIEBROOK DRIVE
 Job No. 20191483-375 - MON PRESERVATION
 By GA Date 12-05-2024 Chkd. RV
 SHEET 2 OF 2