

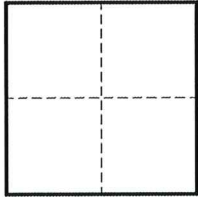
# CORNER RECORD

Agency Index CR-25-043  
Document Number \_\_\_\_\_

City of \_\_\_\_\_ County of SAN JOAQUIN, California  
Brief Legal Description FOUND MONUMENT AT THE INTERSECTION OF TALLAHATCHEY DRIVE AND OZARK COURT.

### CORNER TYPE

### COORDINATES (Optional)



- Government Corner
- Meander
- Rancho
- Control
- Property
- Other

Date of Survey MARCH 5, 2024

N. \_\_\_\_\_ E. \_\_\_\_\_  
 Elevation \_\_\_\_\_  
 Units  Metric  U.S. Survey Foot  
 Horizontal Datum \_\_\_\_\_  
 Zone \_\_\_\_\_ Epoch Date \_\_\_\_\_  
 Vertical Datum \_\_\_\_\_  
 Complies with Public Resources Code §§8801-8819  
 Complies with Public Resources Code §§8890-8902

PLS Act Ref.:  8765(d)  8771  8773  Other:

Corner/Monument:  Left as found  Established  Rebuilt  Pre-Construction  
 Found and tagged  Reestablished  Referenced  Post-Construction

Narrative of corner identified and monument as found, set, reset, replaced, or removed:

See sheet #2 for description(s):

FOUND 3/4" IRON PIN WITH PUNCH, IN MONUMENT WELL AT THE CENTERLINE INTERSECTION OF TALLAHATCHEY DRIVE AND OZARK COURT PER BOOK OF MAPS AND PLATS, VOLUME 22, PAGE 87, SAN JOAQUIN COUNTY RECORDS.

MONUMENT WAS REFERENCED POST-CONSTRUCTION OF A WATER SERVICE REPLACEMENT BY CALIFORNIA WATER SERVICE.

### SURVEYOR'S STATEMENT

This Corner Record was prepared by me or under my direction in conformance with  
 the Professional Land Surveyors' Act on APRIL 9, 2024  
 Signed [Signature] P.L.S. or R.C.E. No. 9251



### COUNTY SURVEYOR'S STATEMENT

This Corner Record was received January 31, 2025  
 and examined and filed February 4, 2025  
 Signed James E. Hart P.L.S. or R.C.E. No. 8657  
 Title County Surveyor



### County Surveyor's Comment

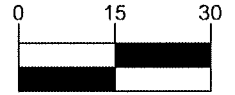
[Empty dashed box for County Surveyor's Comment]

LOT 43  
(22 M 87)

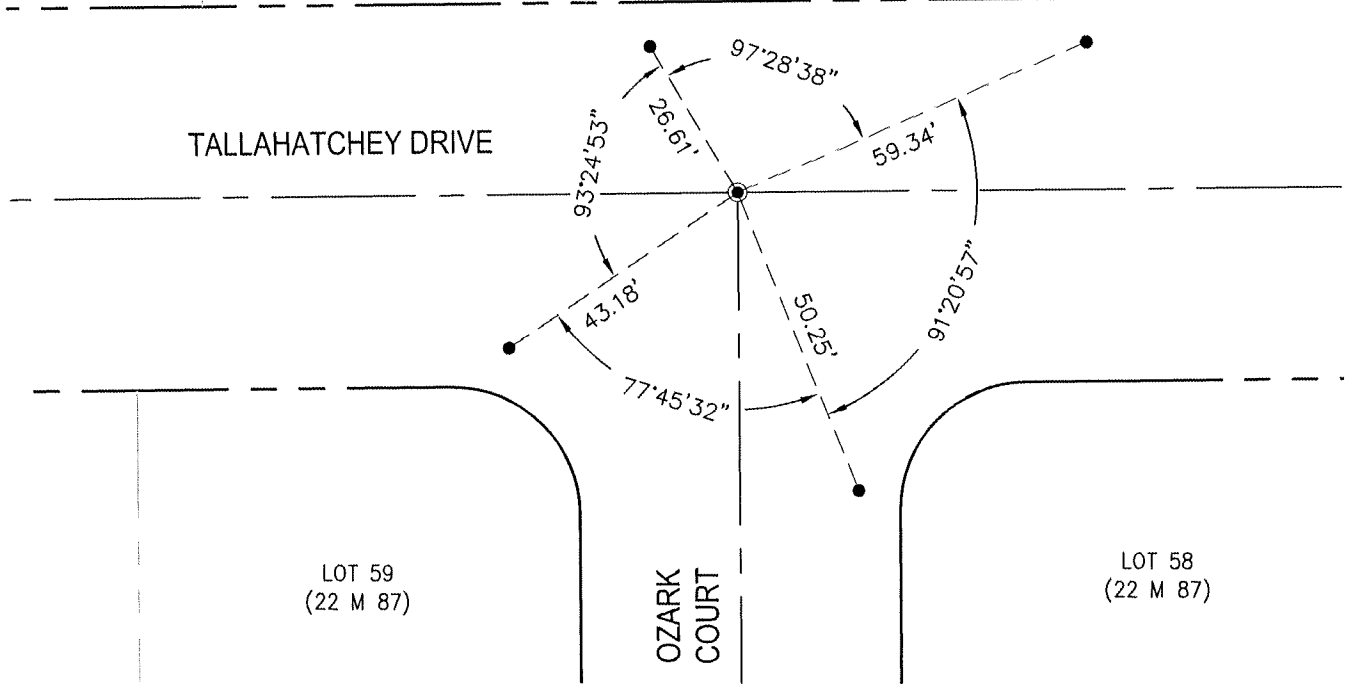
LOT 44  
(22 M 87)

LOT 45  
(22 M 87)

APN: 159-370-44



( SCALE IN FEET )



### LEGEND

- FOUND 3/4" IRON PIN WITH PUNCH, IN MONUMENT WELL, PER BOOK OF MAPS AND PLATS, VOLUME 22, PAGE 87, SAN JOAQUIN COUNTY RECORDS.

- FOUND MAG AND WASHER STAMPED "BKF CONTROL" AT TOP OF CURB, PER CR-24-263, SAN JOAQUIN COUNTY SURVEYOR'S RECORDS.

M MAPS AND PLATS, SAN JOAQUIN COUNTY RECORDS.

CR CORNER RECORD

APN ASSESSOR'S PARCEL NUMBER



1730 N. FIRST STREET  
 SUITE 600  
 SAN JOSE, CA 95112  
 (408) 467-9100  
 www.bkf.com

SUBJECT POST-CONSTRUCTION CORNER RECORD AT  
THE INTERSECTION OF TALLAHATCHEY DR AND OZARK  
COURT  
 JOB NO. 20191483-STOCKTON MON PRESERVATION  
 BY AV APPR. RDV DATE 4-09-2024