

CORNER RECORD

Agency Index CR-25-039

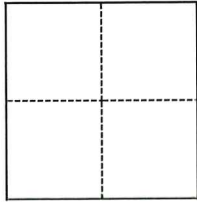
Document Number _____

City of Manteca County of San Joaquin, California

Brief Legal Description Pre Construction Centerline Monument at Norman Drive. 21 PM 127

CORNER TYPE

COORDINATES (Optional)



- Government Corner
- Meander
- Rancho
- Control
- Property
- Other

N. _____ E. _____

Elevation _____

Units Metric U.S. Survey Foot

Horizontal Datum _____

Zone _____ Epoch Date _____

Vertical Datum _____

Complies with Public Resources Code §§8801-8819

Complies with Public Resources Code §§8890-8902

PLS Act Ref.: 8765(d) 8771 8773 Other:

Corner/
Monument: Left as found Established Rebuilt Pre-Construction
 Found and tagged Reestablished Referenced Post-Construction

Narrative of corner identified and monument as found, set, reset, replaced, or removed:

See sheet #2 for description(s):

Set four Scribed crosses for the re-establishment of the centerline monument, in the event of damage during construction.

SURVEYOR'S STATEMENT

This Corner Record was prepared by me or under my direction in conformance with

the Professional Land Surveyors' Act on October 8, 2024

Signed [Signature] P.L.S. [Redacted] No. L.S. 5650



COUNTY SURVEYOR'S STATEMENT

This Corner Record was received January 14, 2025

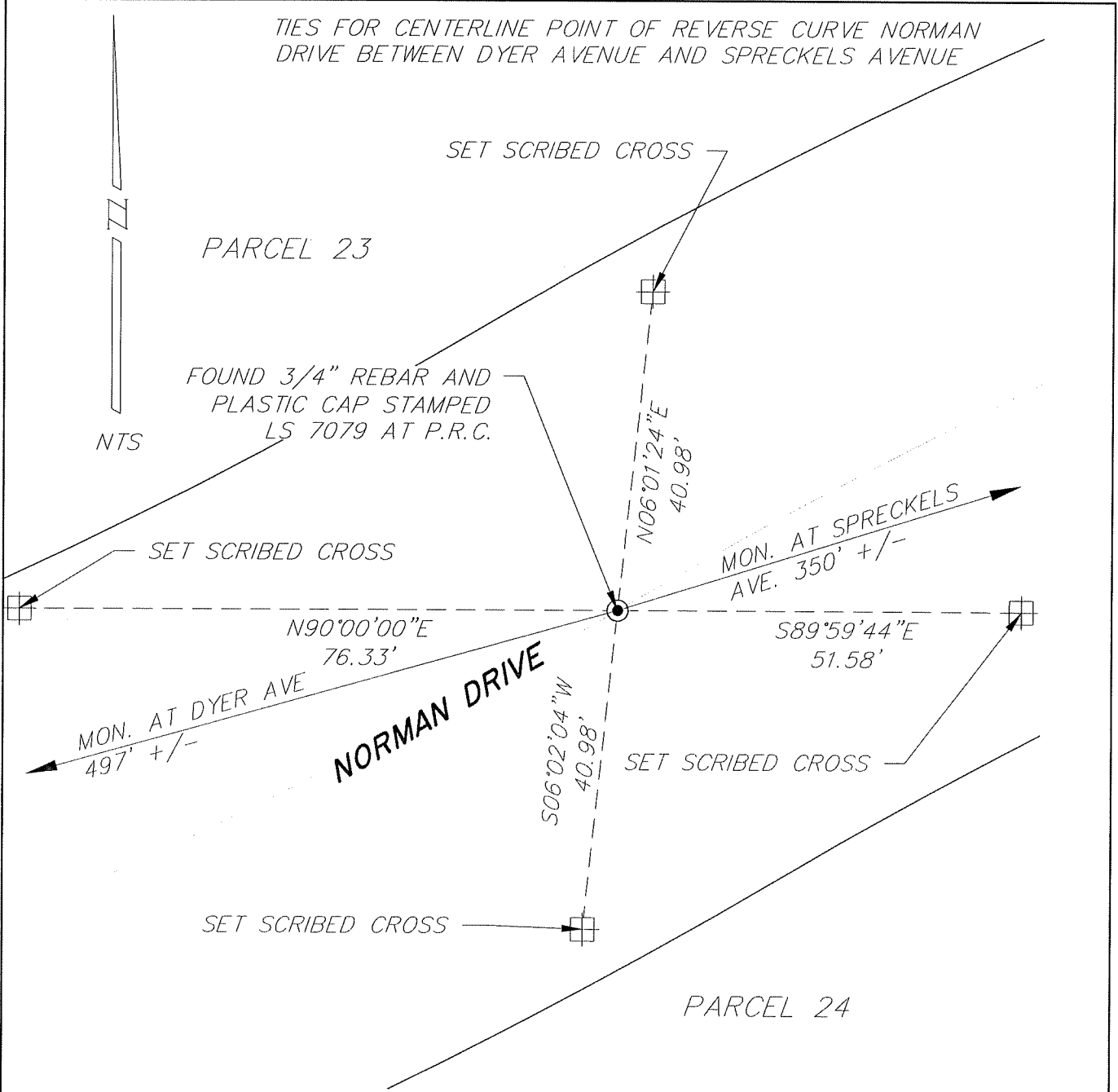
and examined and filed January 27, 2025

Signed James E. Hart P.L.S. or R.C.E. No. 8657

Title County Surveyor

County Surveyor's Comment





TIES FOR CENTERLINE POINT OF REVERSE CURVE NORMAN DRIVE BETWEEN DYER AVENUE AND SPRECKELS AVENUE

PARCEL 23

FOUND 3/4" REBAR AND PLASTIC CAP STAMPED LS 7079 AT P.R.C.

NTS

SET SCRIBED CROSS

SET SCRIBED CROSS

N06°01'24"E
40.98'

MON. AT SPRECKELS AVE. 350' +/-

N90°00'00"E
76.33'

S89°59'44"E
51.58'

MON. AT DYER AVE 497' +/-

NORMAN DRIVE

S06°02'04"W
40.98'

SET SCRIBED CROSS

SET SCRIBED CROSS

PARCEL 24

NOTES:

⊙ FOUND MONUMENT AS NOTED IN MONUMENT WELL PER 21 PARCEL MAPS 127, SAN JOAQUIN COUNTY RECORDS

⊠ SET SCRIBED CROSS

NTS NOT TO SCALE

P.R.C. POINT OF REVERSE CURVE