

CORNER RECORD

Agency Index CR-25-038

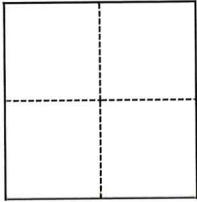
Document Number _____

City of Manteca County of San Joaquin, California

Brief Legal Description Pre Construction Centerline Monument at Noman Dr & Dyer Ave 34 M&P 71

CORNER TYPE

COORDINATES (Optional)



- Government Corner
- Meander
- Rancho
- Control
- Property
- Other

N. _____ E. _____

Elevation _____

Units Metric U.S. Survey Foot

Horizontal Datum _____

Zone _____ Epoch Date _____

Vertical Datum _____

Complies with Public Resources Code §§8801-8819

Complies with Public Resources Code §§8890-8902

PLS Act Ref.: 8765(d) 8771 8773 Other: _____

Corner/
Monument: Left as found Established Rebuilt Pre-Construction
 Found and tagged Reestablished Referenced Post-Construction

Narrative of corner identified and monument as found, set, reset, replaced, or removed:

See sheet #2 for description(s):

Set two Scribed and found two Chiseled points for the re-establishment of the centerline monument, in the event of damage during construction.

SURVEYOR'S STATEMENT

This Corner Record was prepared by me or under my direction in conformance with

the Professional Land Surveyors' Act on October 8, 2024

Signed *Carl L. Betz* P.L.S. ██████ No. 5650



COUNTY SURVEYOR'S STATEMENT

This Corner Record was received January 14, 2025

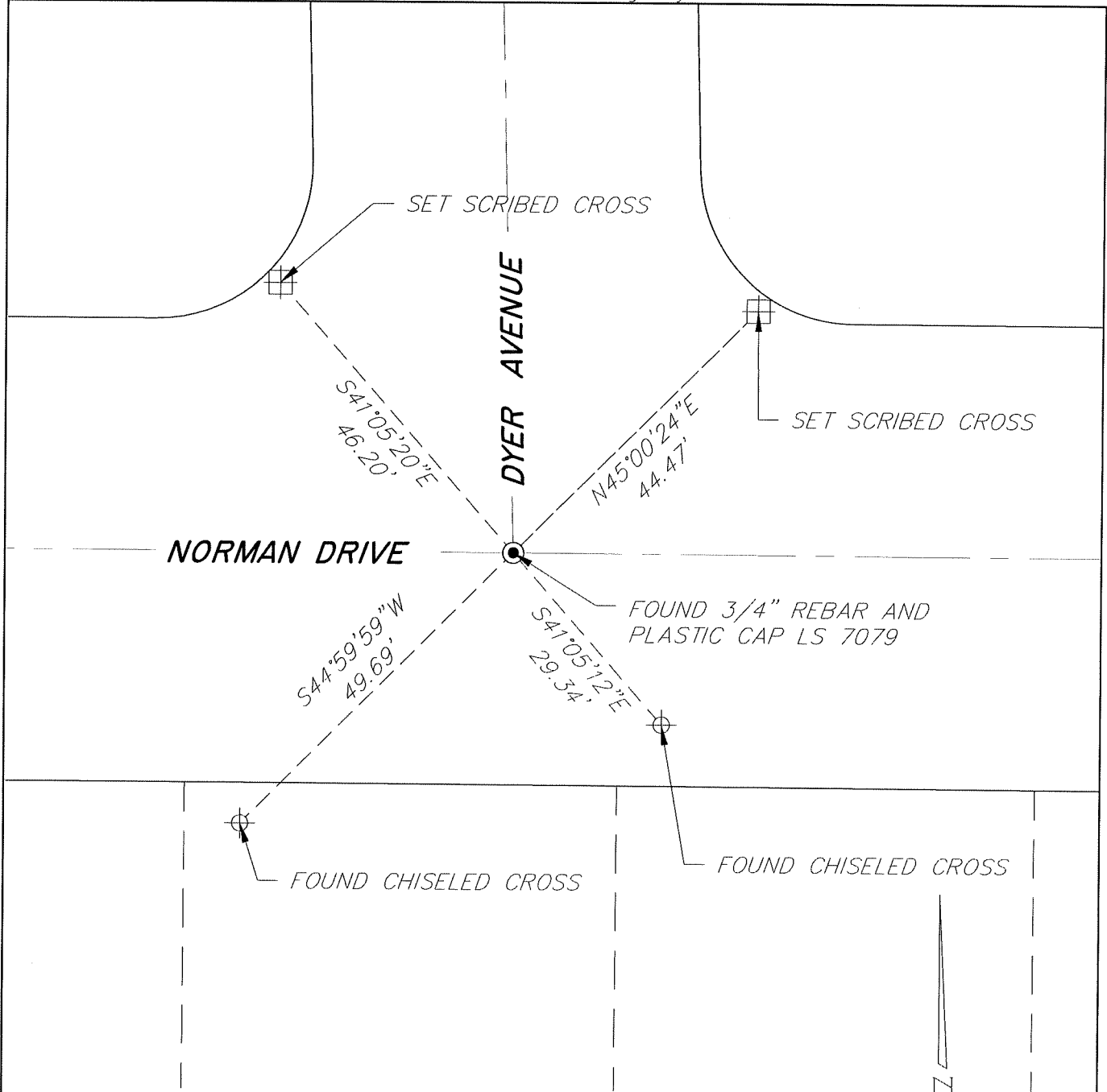
and examined and filed January 27, 2025

Signed *James E. Hart* P.L.S. or R.C.E. No. 8657

Title County Surveyor

County Surveyor's Comment _____





NOTES:

● FOUND MONUMENT AS NOTED
 IN MONUMENT WELL PER 34 MAPS & PLATS 71
 SAN JOAQUIN COUNTY RECORDS

⊕ FOUND CHISELED CROSS

⊞ SET SCRIBED CROSS

NTS NOT TO SCALE



NTS