

# CORNER RECORD

Agency Index CR-25-037

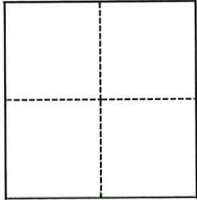
Document Number \_\_\_\_\_

City of Manteca County of San Joaquin, California

Brief Legal Description Pre Construction Centerline Monument at Schadeck St. and Dyer Ave. 34 M&P 71

### CORNER TYPE

### COORDINATES (Optional)



- Government Corner
- Meander
- Rancho
- Control
- Property
- Other

N. \_\_\_\_\_ E. \_\_\_\_\_

Elevation \_\_\_\_\_

Units  Metric  U.S. Survey Foot

Horizontal Datum \_\_\_\_\_

Zone \_\_\_\_\_ Epoch Date \_\_\_\_\_

Vertical Datum \_\_\_\_\_

Complies with Public Resources Code §§8801-8819

Complies with Public Resources Code §§8890-8902

PLS Act Ref.:  8765(d)  8771  8773  Other:

Corner/Monument:  Left as found  Established  Rebuilt  Pre-Construction

Found and tagged  Reestablished  Referenced  Post-Construction

Narrative of corner identified and monument as found, set, reset, replaced, or removed:

See sheet #2 for description(s):

Set two Scribed and found two Chiseled for the re-establishment of the centerline monument, in the event of damage during construction.

### SURVEYOR'S STATEMENT

This Corner Record was prepared by me or under my direction in conformance with

the Professional Land Surveyors' Act on October 8, 2024

Signed Carl L. Betz P.L.S. No. 5650



### COUNTY SURVEYOR'S STATEMENT

This Corner Record was received January 14, 2025

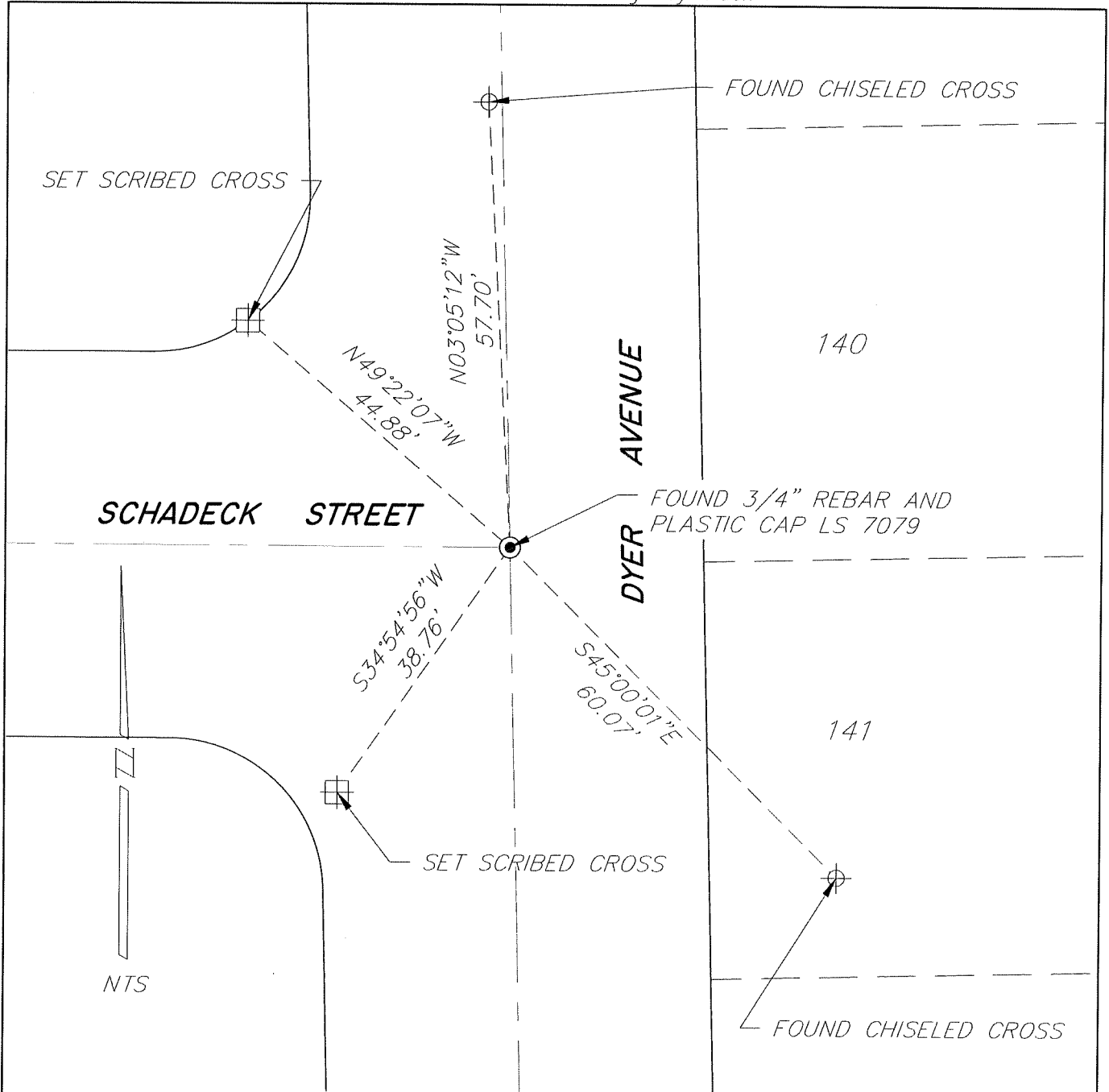
and examined and filed January 27, 2025

Signed James E. Hart P.L.S. or R.C.E. No. 8657

Title County Surveyor

County Surveyor's Comment





**NOTES:**

● FOUND MONUMENT AS NOTED  
 IN MONUMENT WELL PER 34 MAPS & PLATS 71, SAN JOAQUIN COUNTY  
 RECORDS

⊕ FOUND CHISELED CROSS

⊞ SET SCRIBED CROSS

NTS NOT TO SCALE