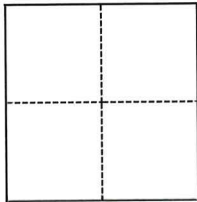


CORNER RECORD

Agency Index CR-25-033
Document Number _____

City of Manteca County of San Joaquin, California
Brief Legal Description PreConstruction Centerline Monument on Lambdin St So. of Lots 44,45 34M&P12

CORNER TYPE



- Government Corner
- Meander
- Rancho
- Control
- Property
- Other

Date of Survey September 4, 2024

COORDINATES (Optional)

N. _____ E. _____
 Elevation _____
 Units Metric U.S. Survey Foot
 Horizontal Datum _____
 Zone _____ Epoch Date _____
 Vertical Datum _____
 Complies with Public Resources Code §§8801-8819
 Complies with Public Resources Code §§8890-8902

- PLS Act Ref.: 8765(d) 8771 8773 Other: _____
- Corner/Monument: Left as found Established Rebuilt Pre-Construction
 Found and tagged Reestablished Referenced Post-Construction

Narrative of corner identified and monument as found, set, reset, replaced, or removed:

See sheet #2 for description(s):

Set one Scribed and found three Chiseled for the re-establishment of the centerline monument, in the event of damage during construction.

SURVEYOR'S STATEMENT

This Corner Record was prepared by me or under my direction in conformance with the Professional Land Surveyors' Act on October 8, 2024

Signed *Carl L. Betz* P.L.S. No. 5650



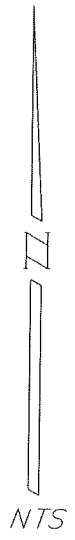
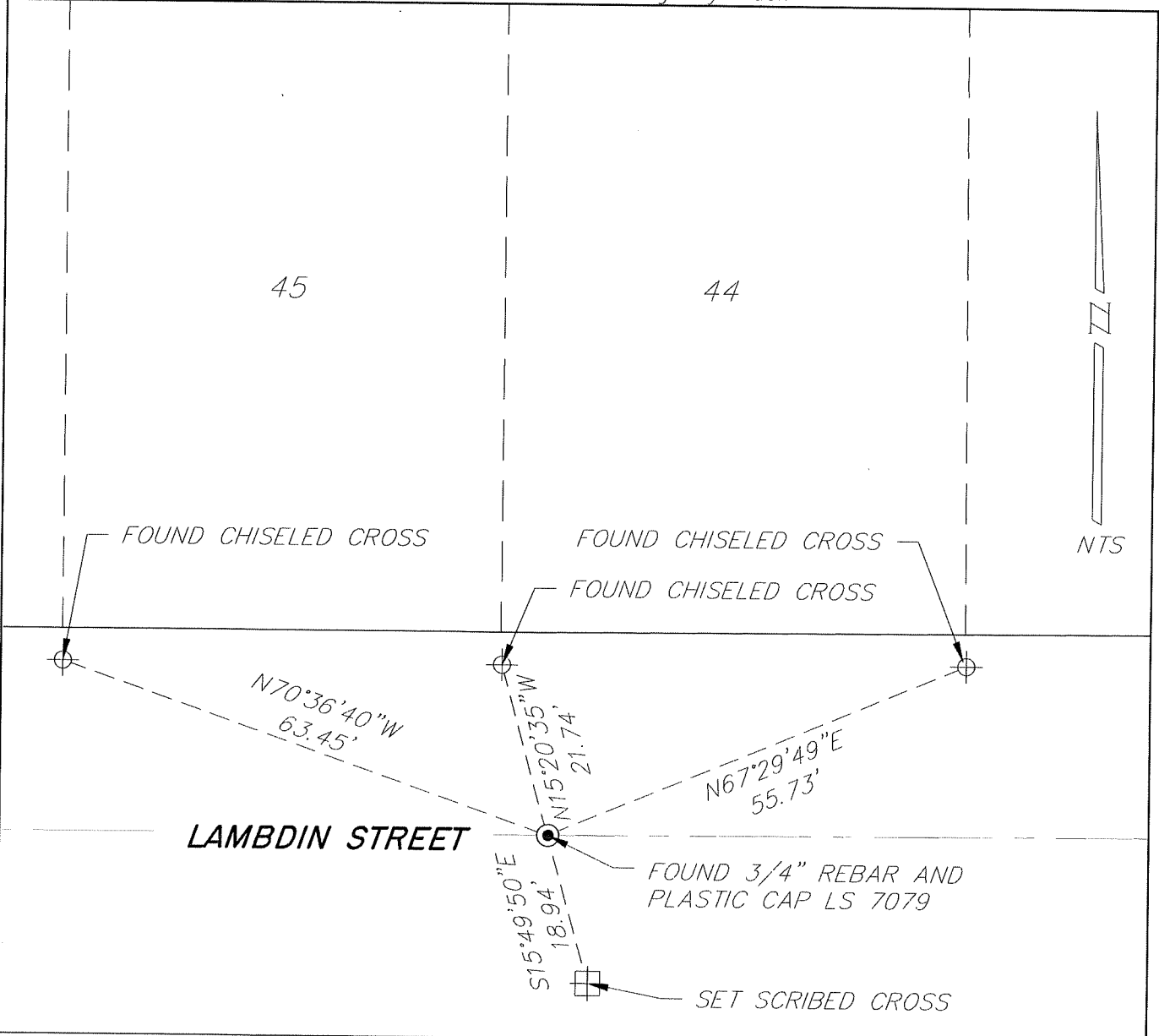
COUNTY SURVEYOR'S STATEMENT

This Corner Record was received January 14, 2025 and examined and filed January 27, 2025

Signed *James E. Hart* P.L.S. or R.G.E. No. 8657
Title County Surveyor



County Surveyor's Comment



NOTES:

- FOUND MONUMENT AS NOTED
IN MONUMENT WELL PER 34 MAPS & PLATS 12
- ⊕ FOUND CHISELED CROSS
- ⊞ SET SCRIBED CROSS
- NTS NOT TO SCALE