

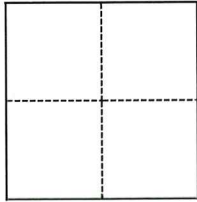
# CORNER RECORD

Agency Index CR-25-031

Document Number \_\_\_\_\_

City of Manteca County of San Joaquin, California

Brief Legal Description Pre Construction Centerline Monument at Bernt Ave and Bristow St. 34 M&P 12



### CORNER TYPE

- Government Corner
- Meander
- Rancho
- Control
- Property
- Other

Date of Survey September 4, 2024

### COORDINATES (Optional)

N. \_\_\_\_\_ E. \_\_\_\_\_

Elevation \_\_\_\_\_

Units  Metric  U.S. Survey Foot

Horizontal Datum \_\_\_\_\_

Zone \_\_\_\_\_ Epoch Date \_\_\_\_\_

Vertical Datum \_\_\_\_\_

Complies with Public Resources Code §§8801-8819

Complies with Public Resources Code §§8890-8902

PLS Act Ref.:  8765(d)  8771  8773  Other:

Corner/Monument:  Left as found  Established  Rebuilt  Pre-Construction  
 Found and tagged  Reestablished  Referenced  Post-Construction

Narrative of corner identified and monument as found, set, reset, replaced, or removed:

See sheet #2 for description(s):

Set three Scribed crosses and found one Chiseled cross for the re-establishment of the centerline monument, in the event of damage during construction.

### SURVEYOR'S STATEMENT

This Corner Record was prepared by me or under my direction in conformance with

the Professional Land Surveyors' Act on October 8, 2024

Signed *Carl L. Betz* P.L.S. No. 5650



### COUNTY SURVEYOR'S STATEMENT

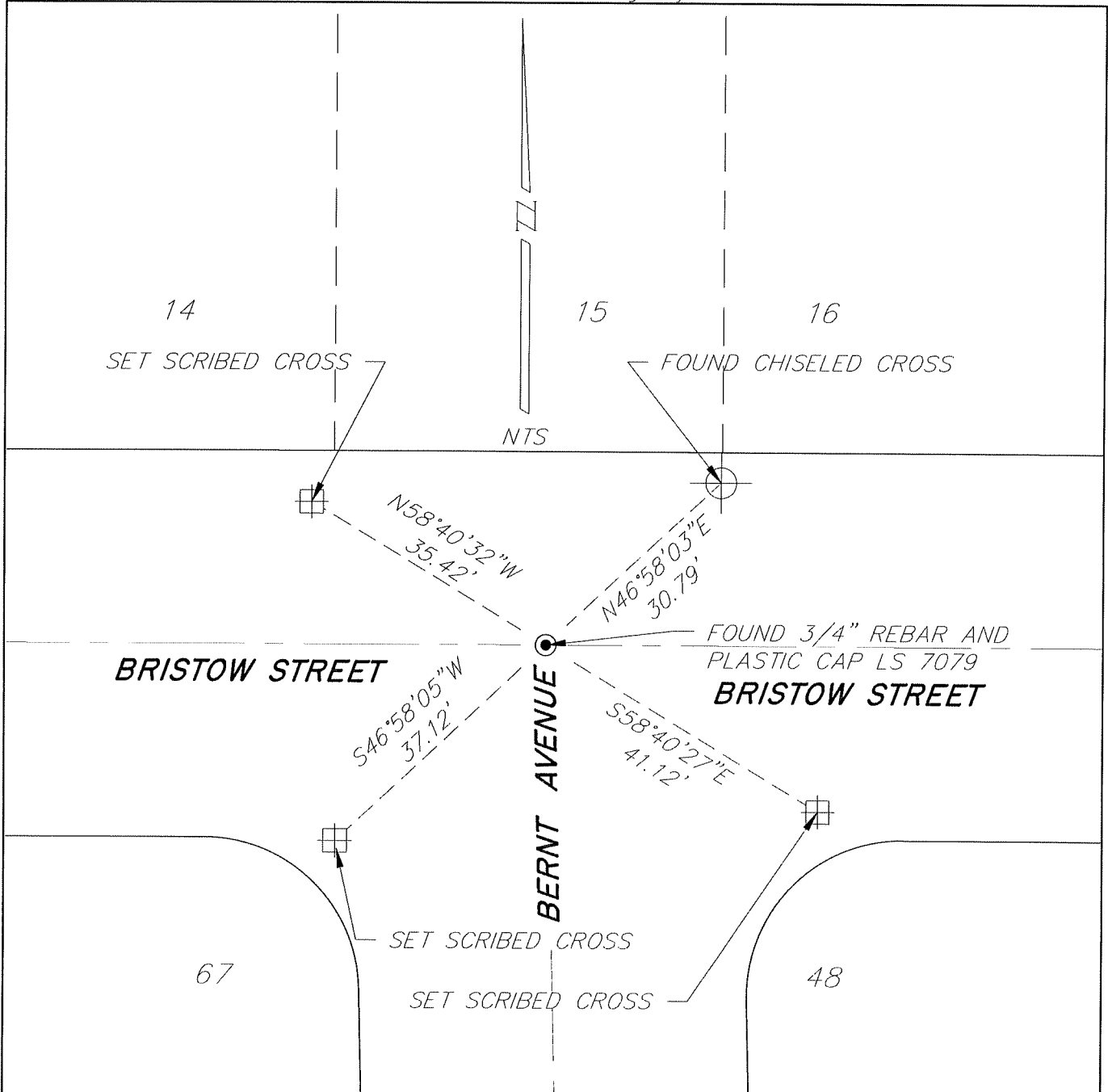
This Corner Record was received January 14, 2025

and examined and filed January 27, 2025

Signed *James E. Hart* P.L.S. or R.C.E. No. 8657  
Title County Surveyor



County Surveyor's Comment



**NOTES:**

● FOUND MONUMENT AS NOTED  
 IN MONUMENT WELL PER 34 MAPS & PLATS 12, SAN JOAQUIN COUNTY  
 RECORDS

⊕ FOUND CHISELED CROSS

⊞ SET SCRIBED CROSS

NTS NOT TO SCALE