

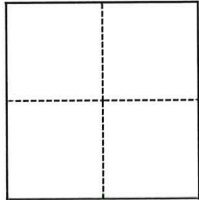
CORNER RECORD

Agency Index CR-25-030
Document Number _____

City of Manteca County of San Joaquin, California
Brief Legal Description Pre-Construction Centerline Monument at Bernt Ave & Lambdin St. 34 M&P 71

CORNER TYPE

COORDINATES (Optional)



- Government Corner
- Meander
- Rancho
- Control
- Property
- Other

N. _____ E. _____
 Elevation _____
 Units Metric U.S. Survey Foot
 Horizontal Datum _____
 Zone _____ Epoch Date _____
 Vertical Datum _____
 Complies with Public Resources Code §§8801-8819
 Complies with Public Resources Code §§8890-8902

Date of Survey September 4, 2024

- PLS Act Ref.: 8765(d) 8771 8773 Other: _____
- Corner/Monument: Left as found Established Rebuilt Pre-Construction
 Found and tagged Reestablished Referenced Post-Construction

Narrative of corner identified and monument as found, set, reset, replaced, or removed:

See sheet #2 for description(s):

Set 2 Scribed and found 3 Chiseled for the re-establishment of the centerline monuments, in the event of damage during construction.

SURVEYOR'S STATEMENT

This Corner Record was prepared by me or under my direction in conformance with

the Professional Land Surveyors' Act on October 8, 2024

Signed Carl L. Betz P.L.S. No. 5650



COUNTY SURVEYOR'S STATEMENT

This Corner Record was received January 14, 2025

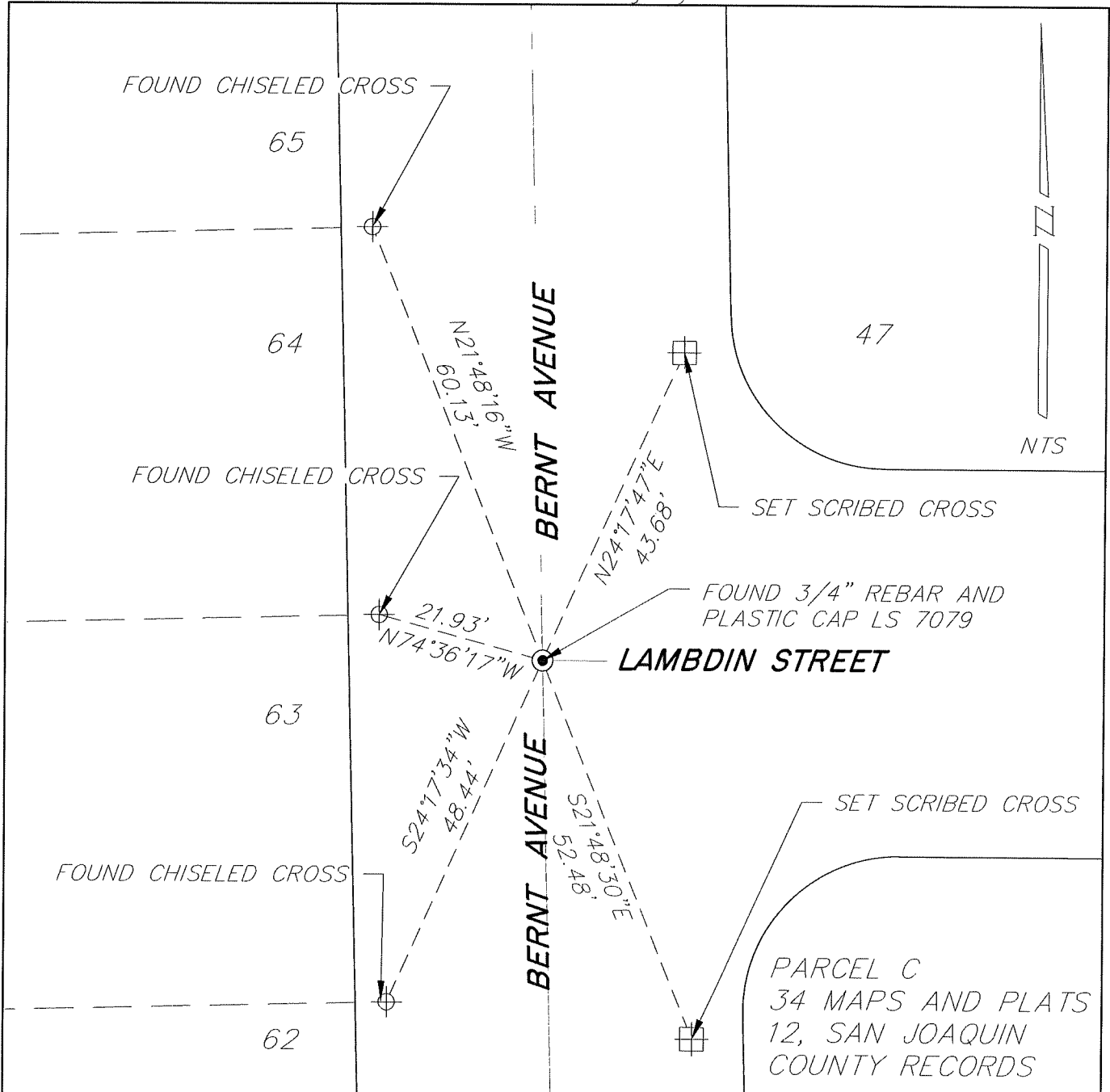
and examined and filed January 27, 2025

Signed James E. Hart P.L.S. or R.C.E. No. 8657

Title County Surveyor

County Surveyor's Comment





NOTES:

- FOUND MONUMENT AS NOTED
IN MONUMENT WELL PER 34 MAPS & PLATS 71, SAN JOAQUIN COUNTY RECORDS
- ⊕ FOUND CHISELED CROSS
- ⊞ SET SCRIBED CROSS
- NTS NOT TO SCALE