

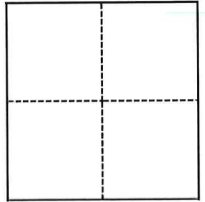
CORNER RECORD

Agency Index CR-25-026
Document Number _____

City of Manteca County of San Joaquin, California
Brief Legal Description Pre Construction Centerline Monument Norman Dr lots 168,169,80,81 34M&P71

CORNER TYPE

COORDINATES (Optional)



- Government Corner
- Meander
- Rancho
- Control
- Property
- Other

N. _____ E. _____
 Elevation _____
 Units Metric U.S. Survey Foot
 Horizontal Datum _____
 Zone _____ Epoch Date _____
 Vertical Datum _____
 Complies with Public Resources Code §§8801-8819
 Complies with Public Resources Code §§8890-8902

Date of Survey September 4, 2024

- PLS Act Ref.: 8765(d) 8771 8773 Other: _____
- Corner/Monument: Left as found Established Rebuilt Pre-Construction
 Found and tagged Reestablished Referenced Post-Construction

Narrative of corner identified and monument as found, set, reset, replaced, or removed:
 See sheet #2 for description(s):
 Found four points for the re-establishment of the centerline monuments, in the event of damage during construction.

SURVEYOR'S STATEMENT

This Corner Record was prepared by me or under my direction in conformance with
 the Professional Land Surveyors' Act on October 8, 2024
 Signed *Carl L. Betz* P.L.S. ██████████ No. 5650

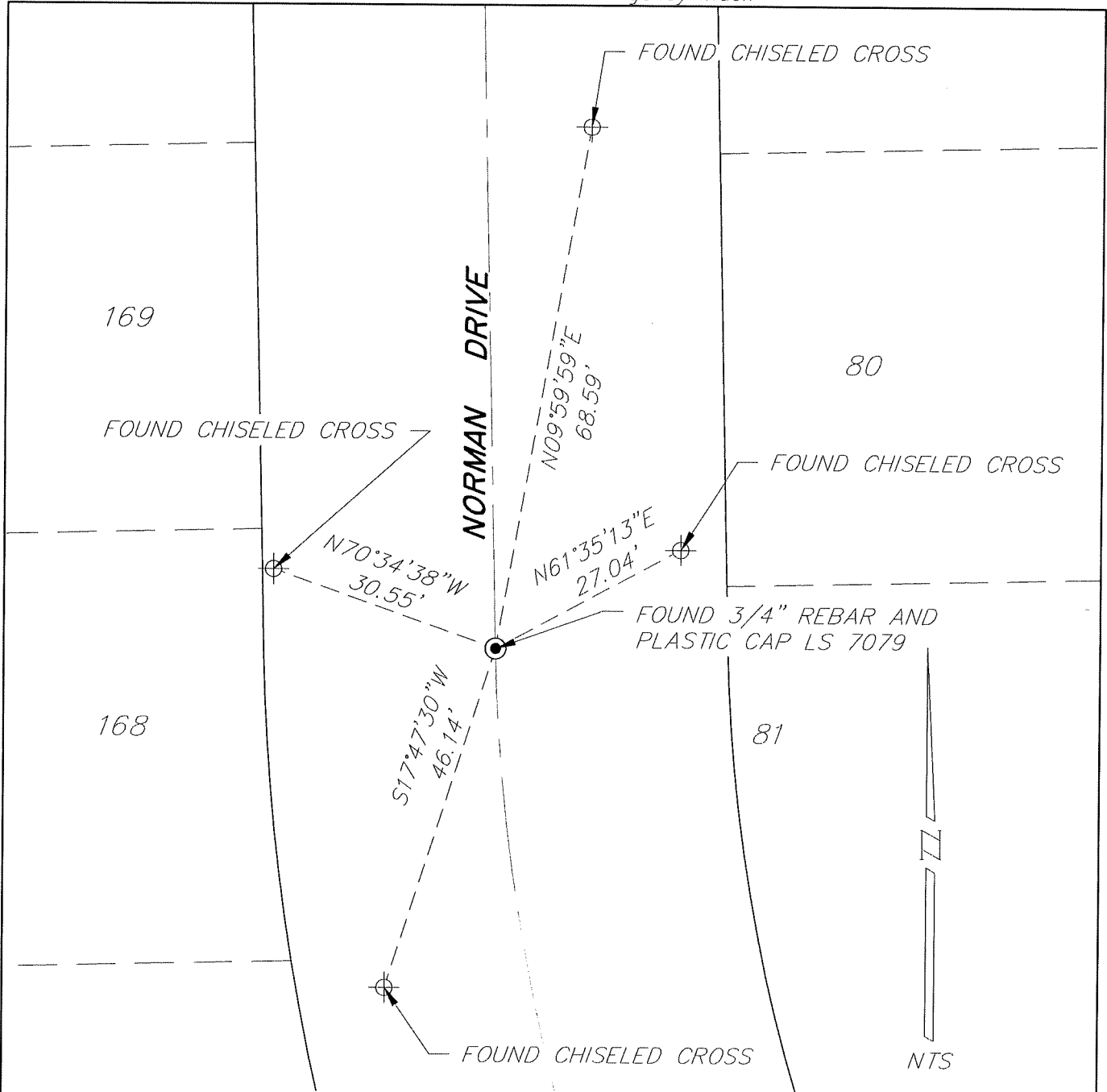


COUNTY SURVEYOR'S STATEMENT

This Corner Record was received January 14, 2025
 and examined and filed January 27, 2025
 Signed *James E. Hart* P.L.S. or R.C.E. No. 8657
 Title County Surveyor



County Surveyor's Comment



NOTES:

● FOUND MONUMENT IN MONUMENT WELL
 PER 34 MAPS & PLATS PAGE 71, SAN JOAQUIN COUNTY RECORDS

⊕ FOUND CHISELED CROSS

NTS NOT TO SCALE