

CORNER RECORD

Agency Index CR-25-025

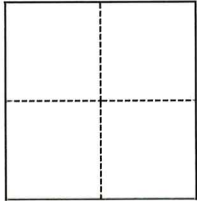
Document Number _____

City of Manteca County of San Joaquin, California

Brief Legal Description PreConstruction Centerline Monument at Whelan Wy and Hutchings St.34M&P12

CORNER TYPE

COORDINATES (Optional)



- Government Corner
- Meander
- Rancho
- Control
- Property
- Other

Date of Survey September 4, 2024

N. _____ E. _____

Elevation _____

Units Metric U.S. Survey Foot

Horizontal Datum _____

Zone _____ Epoch Date _____

Vertical Datum _____

Complies with Public Resources Code §§8801-8819

Complies with Public Resources Code §§8890-8902

PLS Act Ref.: 8765(d) 8771 8773 Other:

Corner/Monument: Left as found Established Rebuilt Pre-Construction

Found and tagged Reestablished Referenced Post-Construction

Narrative of corner identified and monument as found, set, reset, replaced, or removed:

See sheet #2 for description(s):

Set four points for the re-establishment of two centerline monuments, in the event of damage during construction.

SURVEYOR'S STATEMENT

This Corner Record was prepared by me or under my direction in conformance with

the Professional Land Surveyors' Act on October 8, 2024

Signed Carl L. Betz P.L.S. No. 5650



COUNTY SURVEYOR'S STATEMENT

This Corner Record was received January 14, 2025

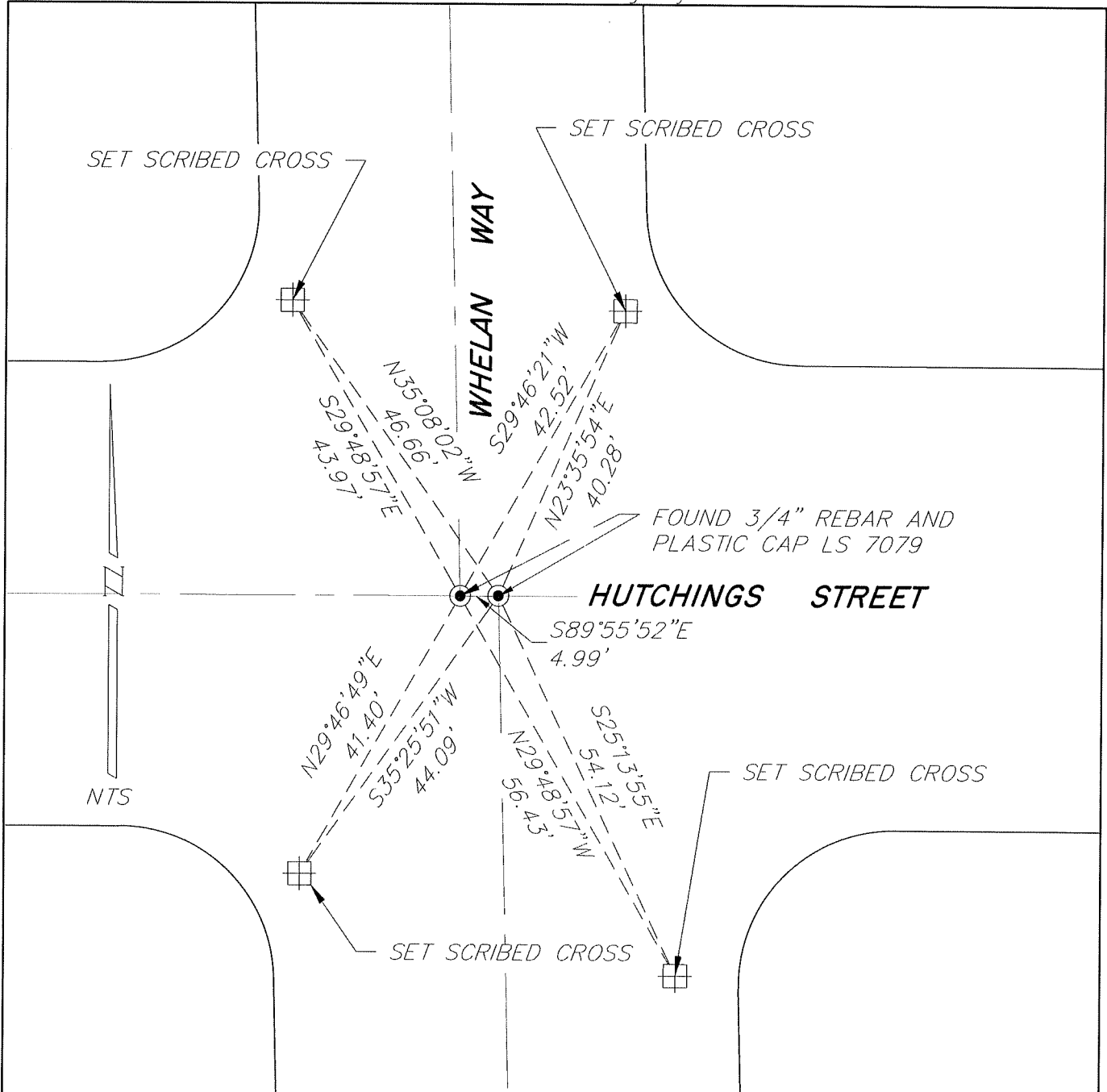
and examined and filed January 27, 2025

Signed James E. Hart P.L.S. or R.C.E. No. 8657

Title County Surveyor

County Surveyor's Comment





NOTES:

● FOUND MONUMENT IN MONUMENT WELL
PER 34 MAPS & PLATS PAGE 12, SAN JOAQUIN COUNTY RECORDS

⊠ SET SCRIBED CROSS

NTS NOT TO SCALE