

# CORNER RECORD

Agency Index CR-25-023

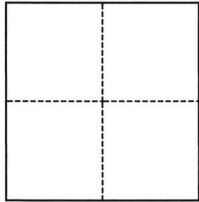
Document Number \_\_\_\_\_

City of Stockton County of San Joaquin, California

Brief Legal Description Lots 42, 43, 44, 45, M&P 23-43

### CORNER TYPE

### COORDINATES (Optional)



- Government Corner
- Meander
- Rancho
- Control
- Property
- Other

Date of Survey January 3, 2025

N. \_\_\_\_\_ E. \_\_\_\_\_

Elevation \_\_\_\_\_

Units  Metric  U.S. Survey Foot

Horizontal Datum \_\_\_\_\_

Zone \_\_\_\_\_ Epoch Date \_\_\_\_\_

Vertical Datum \_\_\_\_\_

Complies with Public Resources Code §§8801-8819

Complies with Public Resources Code §§8890-8902

PLS Act Ref.:  8765(d)  8771  8773  Other:

Corner/Monument:  Left as found  Established  Rebuilt  Pre-Construction

Found and tagged  Reestablished  Referenced  Post-Construction

Narrative of corner identified and monument as found, set, reset, replaced, or removed:

See sheet #2 for description(s):

### SURVEYOR'S STATEMENT

This Corner Record was prepared by me or under my direction in conformance with

the Professional Land Surveyors' Act on January 3, 2025

Signed [Signature] P.L.S. or R.C.E. No. PLS 7889



### COUNTY SURVEYOR'S STATEMENT

This Corner Record was received January 8, 2025

and examined and filed January 23, 2025

Signed James E. Hart P.L.S. or R.C.E. No. 8657

Title County Surveyor

County Surveyor's Comment



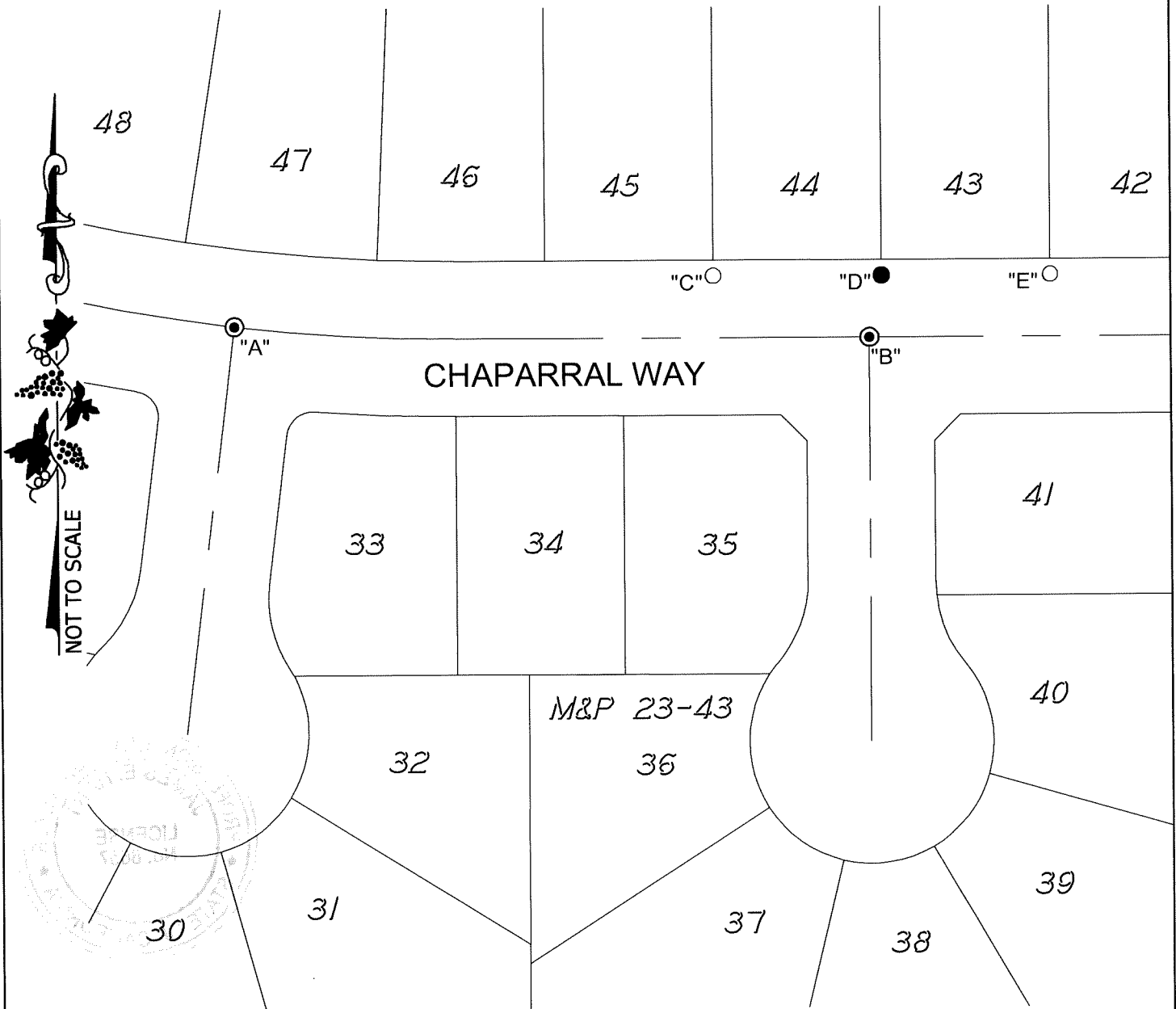
**LEGEND:**

M&P MAPS & PLATS, VOLUME AND PAGE, SAN JOAQUIN COUNTY RECORDS

- FOUND CHISELED CROSS PER CORNER RECORD 24-500, SAN JOAQUIN COUNTY SURVEYOR'S RECORDS
- ⊙ FOUND 3/4" IRON ROD TAGGED "R.C.E. 8189" IN MONUMENT BOX
- SET 1.25" DIAMETER BRASS DISK STAMPED "ELSON LS 7889"

**DESCRIPTION:**

THIS CORNER RECORD IS FOR THE PURPOSE OF MONUMENT PRESERVATION. REFERENCES WERE FOUND AND/OR SET FOR FOUND MONUMENTS AS NOTED ON DIAGRAM. NO BOUNDARY ANALYSIS WAS PERFORMED. THIS CORNER RECORD DOES NOT VERIFY THE MONUMENT(S) TO BE IN THE CORRECT POSITION.



S:\Projects\2017\17046-92\3\_Drawings\17046-92\_CR.dwg 01/06/25 3:10pm CARTER-XR/PS: 17046-92\_HC.dwg

ANGLE AND DISTANCE TABLE			
BS-O-FS	ANGLE	BS DISTANCE	FS DISTANCE
A-C-B	152°29'32"	186.06'	64.84'
A-D-B	074°22'55"	250.85'	24.45'
A-E-B	015°34'28"	315.70'	73.81'