

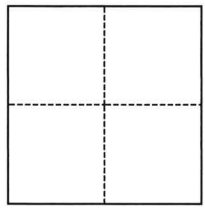
CORNER RECORD

Agency Index CR-25-021
 Document Number _____

City of Stockton County of San Joaquin, California
 Brief Legal Description Lots 398, 399, 400, 401, 440, 441, M.&P. 22-96

CORNER TYPE

COORDINATES (Optional)



- Government Corner
- Meander
- Rancho
- Control
- Property
- Other

Date of Survey January 3, 2025

N. _____ E. _____
 Elevation _____
 Units Metric U.S. Survey Foot
 Horizontal Datum _____
 Zone _____ Epoch Date _____
 Vertical Datum _____
 Complies with Public Resources Code §§8801-8819
 Complies with Public Resources Code §§8890-8902

- PLS Act Ref.: 8765(d) 8771 8773 Other:
- Corner/Monument: Left as found Established Rebuilt Pre-Construction
 Found and tagged Reestablished Referenced Post-Construction

Narrative of corner identified and monument as found, set, reset, replaced, or removed:
 See sheet #2 for description(s):

SURVEYOR'S STATEMENT

This Corner Record was prepared by me or under my direction in conformance with
 the Professional Land Surveyors' Act on January 3, 2025

Signed [Signature] P.L.S. or R.C.E. No. PLS 7889



COUNTY SURVEYOR'S STATEMENT

This Corner Record was received January 8, 2025
 and examined and filed January 23, 2025

Signed James E Hart P.L.S. or R.C.E. No. 8657

Title County Surveyor

County Surveyor's Comment



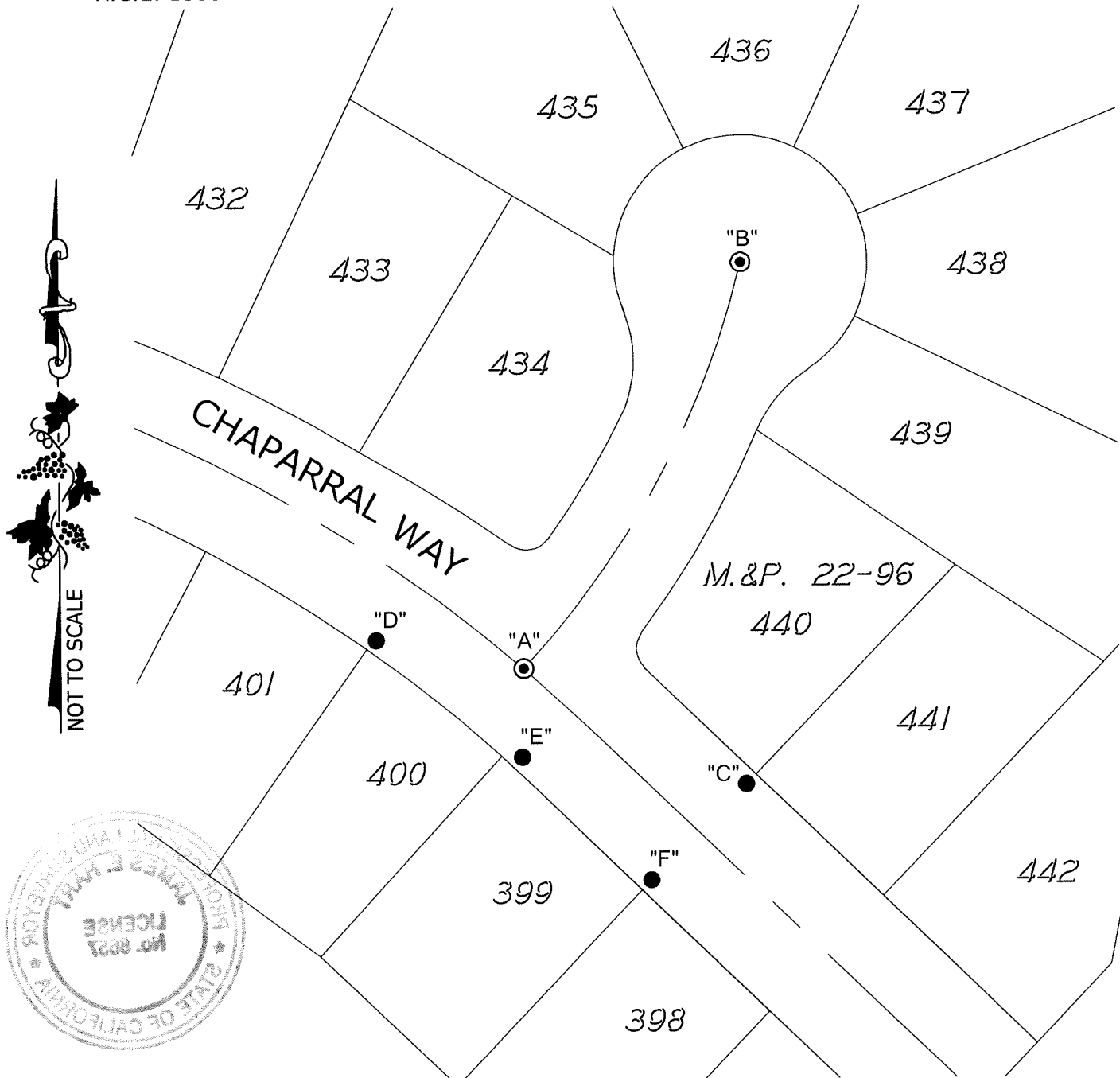
LEGEND:

M.&P. MAPS AND PLATS, BOOK AND PAGE, SAN JOAQUIN COUNTY RECORDS

- FOUND CHISELED CROSS PER CORNER RECORD 24-459, SAN JOAQUIN COUNTY SURVEYOR'S RECORDS
- ⊙ FOUND 3/4" IRON ROD TAGGED "R.C.E. 15831" IN MONUMENT WELL

DESCRIPTION:

THIS CORNER RECORD IS FOR THE PURPOSE OF MONUMENT PRESERVATION. REFERENCES WERE SET FOR FOUND MONUMENTS AS NOTED ON DIAGRAM. NO BOUNDARY ANALYSIS WAS PERFORMED. THIS CORNER RECORD DOES NOT VERIFY THE MONUMENT(S) TO BE IN THE CORRECT POSITION.



ANGLE AND DISTANCE TABLE			
BS-O-FS	ANGLE	BS DISTANCE	FS DISTANCE
A-C-B	062°05'53"	93.00'	193.48'
A-D-B	056°44'55"	55.77'	195.11'
A-E-B	022°59'13"	32.84'	200.76'
A-F-B	039°31'14"	91.41'	231.32'

S:\Projects\2017\17046-89\3_Drawings\17046-89_CR.dwg 01/06/25 3:05pm - CARTER_XREFS 17046-89_HC.dwg