

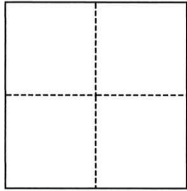
CORNER RECORD

Agency Index CR-25-007
Document Number _____

City of Stockton County of San Joaquin, California
Brief Legal Description Lots 30, 31, 32, M.&P. 25-61

CORNER TYPE

COORDINATES (Optional)



- Government Corner
- Meander
- Rancho
- Control
- Property
- Other

Date of Survey October 22, 2024

N. _____ E. _____

Elevation _____

Units Metric U.S. Survey Foot

Horizontal Datum _____

Zone _____ Epoch Date _____

Vertical Datum _____

Complies with Public Resources Code §§8801-8819

Complies with Public Resources Code §§8890-8902

PLS Act Ref.: 8765(d) 8771 8773 Other:

Corner/Monument: Left as found Established Rebuilt Pre-Construction

Found and tagged Reestablished Referenced Post-Construction

Narrative of corner identified and monument as found, set, reset, replaced, or removed:

See sheet #2 for description(s):

SURVEYOR'S STATEMENT

This Corner Record was prepared by me or under my direction in conformance with

the Professional Land Surveyors' Act on October 22, 2024

Signed [Signature] P.L.S. or R.C.E. No. PLS 7889



COUNTY SURVEYOR'S STATEMENT

This Corner Record was received January 8, 2025

and examined and filed January 16, 2025

Signed James E. Hart P.L.S. or R.C.E. No. 8657

Title County Surveyor

County Surveyor's Comment

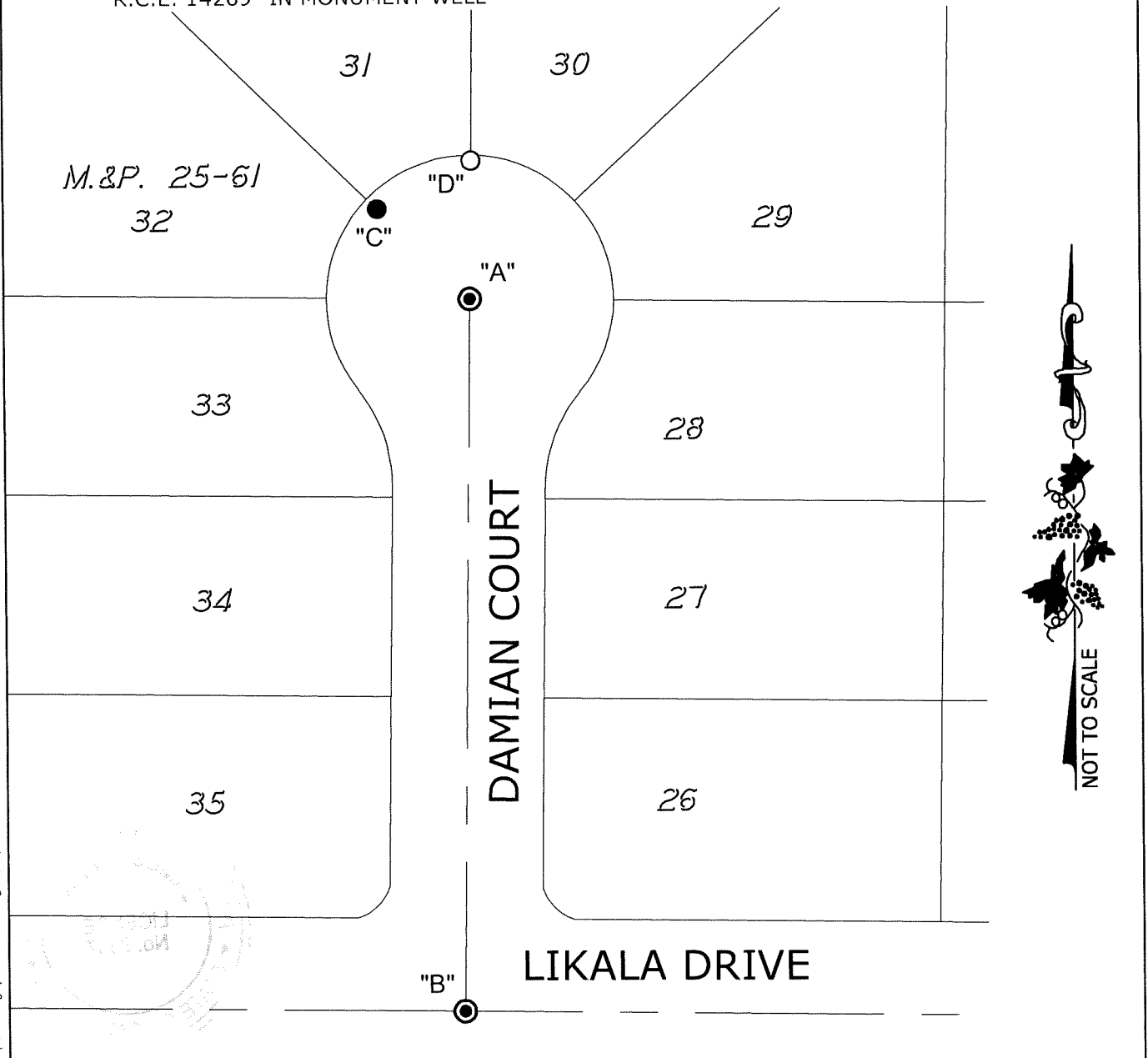


LEGEND:

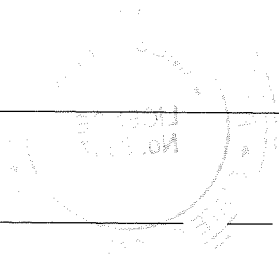
- M.&P. MAPS AND PLATS, BOOK AND PAGE, SAN JOAQUIN COUNTY RECORDS
- SET 1.25" DIAMETER BRASS DISK STAMPED "ELSON LS 7889"
- FOUND CHISELED CROSS PER CORNER RECORD 24-360, SAN JOAQUIN COUNTY SURVEYOR'S RECORDS
- ⊙ FOUND 3/4" IRON ROD TAGGED "R.C.E. 14269" IN MONUMENT WELL

DESCRIPTION:

THIS CORNER RECORD IS FOR THE PURPOSE OF MONUMENT PRESERVATION. REFERENCES WERE SET FOR FOUND MONUMENTS AS NOTED ON DIAGRAM. NO BOUNDARY ANALYSIS WAS PERFORMED. THIS CORNER RECORD DOES NOT VERIFY THE MONUMENT(S) TO BE IN THE CORRECT POSITION.



S:\Projects\2017\17046-82\3 Drawings\17046-82_Cor.dwg 12/30/24 8:16am - CARTER - XREFS: 17046-82_HC.dwg



ANGLE AND DISTANCE TABLE			
BS-O-FS	ANGLE	BS DISTANCE	FS DISTANCE
A-C-B	039°45'41"	42.21'	267.75'
A-D-B	000°00'38"	45.05'	276.93'