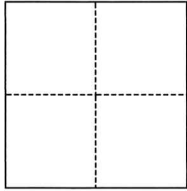


CORNER RECORD

Agency Index CR-25-005
Document Number _____

City of Stockton County of San Joaquin, California
Brief Legal Description _____ Parcel 1, P.M. 22-29



CORNER TYPE

- Government Corner
- Meander
- Rancho
- Control
- Property
- Other

Date of Survey December 12, 2024

COORDINATES (Optional)

N. _____ E. _____
 Elevation _____
 Units Metric U.S. Survey Foot
 Horizontal Datum _____
 Zone _____ Epoch Date _____
 Vertical Datum _____
 Complies with Public Resources Code §§8801-8819
 Complies with Public Resources Code §§8890-8902

- PLS Act Ref.: 8765(d) 8771 8773 Other:
- Corner/Monument: Left as found Established Rebuilt Pre-Construction
 Found and tagged Reestablished Referenced Post-Construction

Narrative of corner identified and monument as found, set, reset, replaced, or removed:
 See sheet #2 for description(s):

Initial pre-construction survey performed May 1, 2024. Post-construction survey performed December 12, 2024. Monuments found during pre-construction survey noted on exhibit and found to be undisturbed during post-construction survey.

SURVEYOR'S STATEMENT

This Corner Record was prepared by me or under my direction in conformance with
 the Professional Land Surveyors' Act on December 12, 2024
 Signed [Signature] P.L.S. or R.C.E. No. PLS 7889



COUNTY SURVEYOR'S STATEMENT

This Corner Record was received January 8, 2025
 and examined and filed January 16, 2025
 Signed James E. Hart P.L.S. or R.C.E. No. 8657
 Title County Surveyor



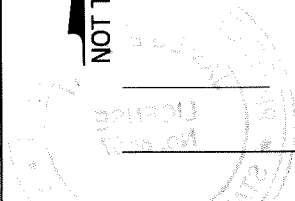
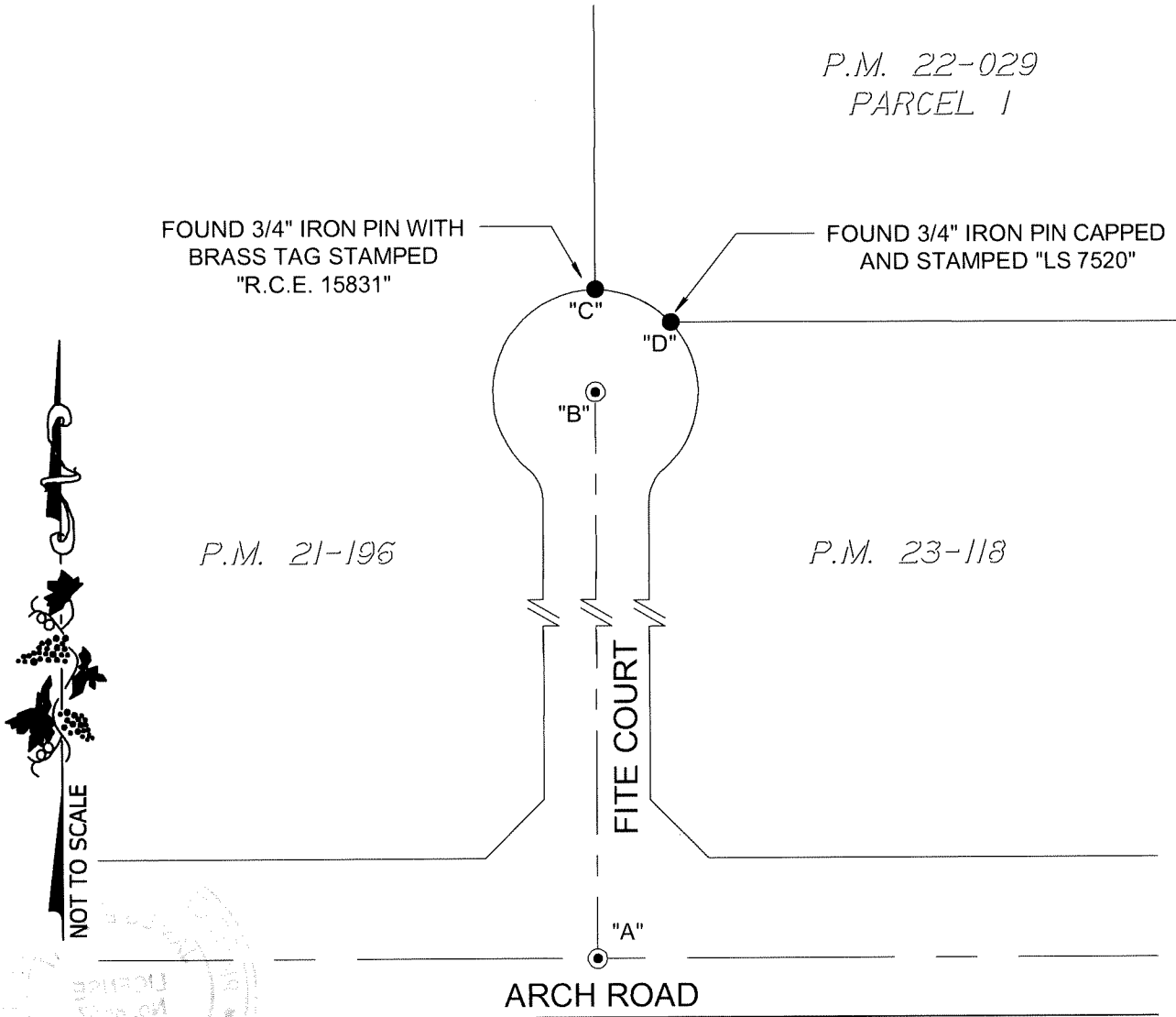
County Surveyor's Comment

LEGEND:

- P.M. PARCEL MAP, BOOK AND PAGE, SAN JOAQUIN COUNTY RECORDS
- FOUND MONUMENT AS NOTED.
- ⊙ FOUND 3/4" IRON PIN WITH BRASS TAG STAMPED "R.C.E. 15831" IN MONUMENT WELL

DESCRIPTION:

THIS CORNER RECORD IS FOR THE PURPOSE OF MONUMENT PRESERVATION. REFERENCES WERE FOUND AND/OR SET FOR FOUND MONUMENTS AS NOTED ON DIAGRAM. NO BOUNDARY ANALYSIS WAS PERFORMED. THIS CORNER RECORD DOES NOT VERIFY THE MONUMENT(S) TO BE IN THE CORRECT POSITION.



ANGLE AND DISTANCE TABLE			
BS-O-FS	ANGLE	BS DISTANCE	FS DISTANCE
A-C-B	0°02'45"	1173.55'	62.05'
A-D-B	44°57'22"	1154.55'	62.05'

S:\Projects\2024\24023\3_Drawing\24023_HC.dwg 12/12/24 4:30pm - CARTER XREBS