

# CORNER RECORD

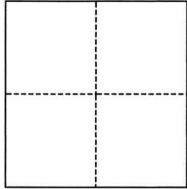
Agency Index CR-24-507  
Document Number \_\_\_\_\_

City of Stockton County of San Joaquin, California

Brief Legal Description Lots 27, 28, M.&P. 19-33

### CORNER TYPE

### COORDINATES (Optional)



- Government Corner
- Meander
- Rancho
- Control
- Property
- Other

Date of Survey December 6, 2024

N. \_\_\_\_\_ E. \_\_\_\_\_

Elevation \_\_\_\_\_

Units  Metric  U.S. Survey Foot

Horizontal Datum \_\_\_\_\_

Zone \_\_\_\_\_ Epoch Date \_\_\_\_\_

Vertical Datum \_\_\_\_\_

Complies with Public Resources Code §§8801-8819

Complies with Public Resources Code §§8890-8902

PLS Act Ref.:  8765(d)  8771  8773  Other:

Corner/Monument:  Left as found  Established  Rebuilt  Pre-Construction

Found and tagged  Reestablished  Referenced  Post-Construction

Narrative of corner identified and monument as found, set, reset, replaced, or removed:

See sheet #2 for description(s):

### SURVEYOR'S STATEMENT

This Corner Record was prepared by me or under my direction in conformance with

the Professional Land Surveyors' Act on December 6, 2024

Signed [Signature] P.L.S. or R.C.E. No. PLS 7889



### COUNTY SURVEYOR'S STATEMENT

This Corner Record was received December 23, 2024

and examined and filed December 31, 2024

Signed James E. Hart P.L.S. or R.C.E. No. 8657

Title County Surveyor

County Surveyor's Comment

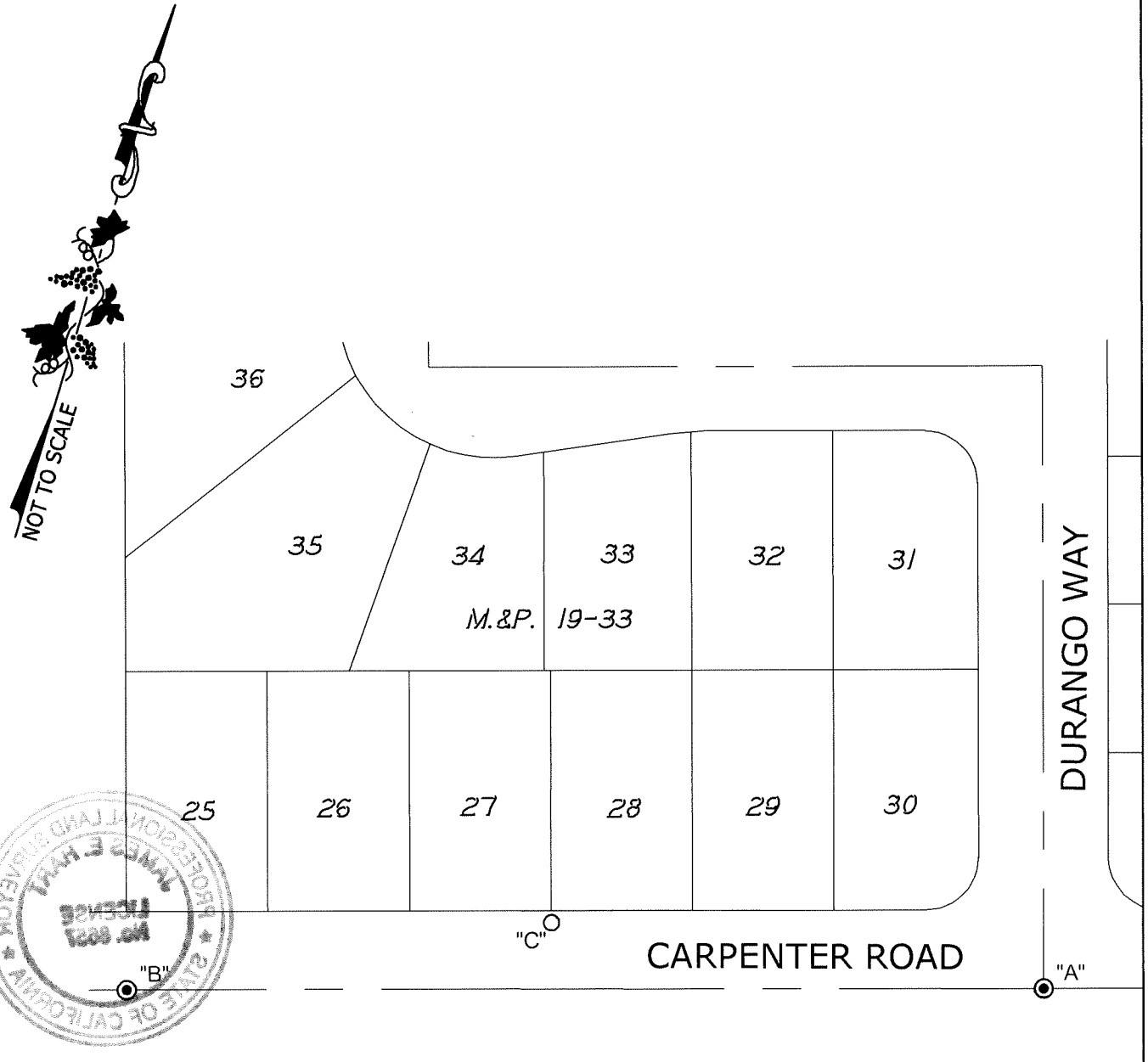


**LEGEND:**

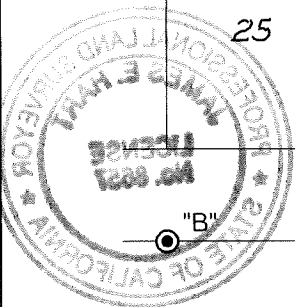
- M.&P. MAPS AND PLATS, BOOK AND PAGE, SAN JOAQUIN COUNTY RECORDS
- SET 1.25" DIAMETER BRASS DISK STAMPED "ELSON LS 7889"
- ⊙ FOUND 3/4" IRON PIPE TAGGED "R.C.E. 9924" IN MONUMENT WELL

**DESCRIPTION:**

THIS CORNER RECORD IS FOR THE PURPOSE OF MONUMENT PRESERVATION. REFERENCES WERE SET FOR FOUND MONUMENTS AS NOTED ON DIAGRAM. NO BOUNDARY ANALYSIS WAS PERFORMED. THIS CORNER RECORD DOES NOT VERIFY THE MONUMENT(S) TO BE IN THE CORRECT POSITION.



S:\Projects\2017\17046-87\3\_Drawings\17046-87\_CS.dwg 12/12/24 3:03pm CARVER XREFS: 17046-87\_HC.dwg



ANGLE AND DISTANCE TABLE			
BS-O-FS	ANGLE	BS DISTANCE	FS DISTANCE
A-C-B	163°27'07"	191.16'	165.44'