

CORNER RECORD

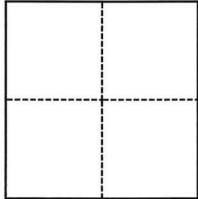
Agency Index CR-24-505

Document Number _____

City of Stockton County of San Joaquin, California

Brief Legal Description Chiseled X on top of curb. No references found on any record maps.

CORNER TYPE



- Government Corner
- Meander
- Rancho
- Control
- Property
- Other

Date of Survey March 30, 2023

COORDINATES (Optional)

N. 2166704.77 E. 6332710.38

Elevation _____

Units Metric U.S. Survey Foot

Horizontal Datum NAD 83

Zone 3 Epoch Date 1991.35

Vertical Datum _____

Complies with Public Resources Code §§8801-8819

Complies with Public Resources Code §§8890-8902

PLS Act Ref.: 8765(d) 8771 8773 Other:

Corner/Monument: Left as found Established Rebuilt Pre-Construction

Found and tagged Reestablished Referenced Post-Construction

Narrative of corner identified and monument as found, set, reset, replaced, or removed:

See sheet #2 for description(s):

Chiseled X on top of curb. No references found on any record maps.

SURVEYOR'S STATEMENT

This Corner Record was prepared by me or under my direction in conformance with

the Professional Land Surveyors' Act on 12/12/2024.

Signed [Signature] P.L.S. or R.C.E. No. 8123



COUNTY SURVEYOR'S STATEMENT

This Corner Record was received December 13, 2024

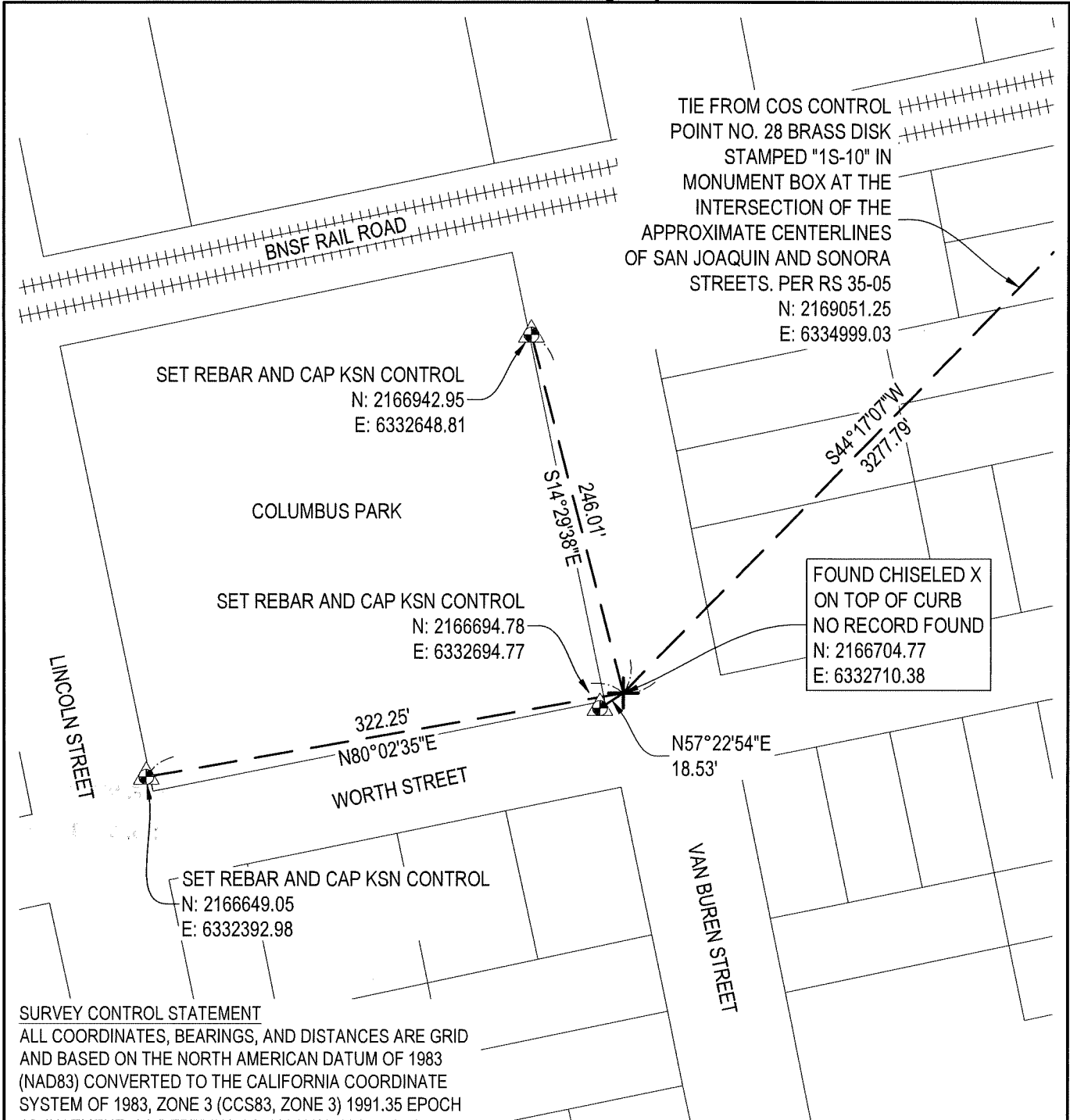
and examined and filed December 19, 2024.

Signed James E. Hart P.L.S. or R.C.E. No. 8657

Title County Surveyor

County Surveyor's Comment





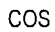



SURVEY CONTROL STATEMENT

ALL COORDINATES, BEARINGS, AND DISTANCES ARE GRID AND BASED ON THE NORTH AMERICAN DATUM OF 1983 (NAD83) CONVERTED TO THE CALIFORNIA COORDINATE SYSTEM OF 1983, ZONE 3 (CCS83, ZONE 3) 1991.35 EPOCH ADJUSTMENT, AS REFERENCED BY AVAILABLE CITY OF STOCKTON PUBLISHED CONTROL MONUMENTS (RECORDED IN BOOK 35 OF SURVEYS AT PAGE 05, SAN JOAQUIN COUNTY RECORDS). GROUND DISTANCES MUST BE MULTIPLIED BY A COMBINED SCALE FACTOR (CSF) OF 0.99993885 TO OBTAIN GRID DISTANCES. UNITS SHOWN ARE BASED ON THE U.S. SURVEY FOOT. A CONVERGENCE ANGLE OF -0°29'14.2" AND THE CSF WERE DETERMINED AT CONTROL POINT 340.

NOTE:

THIS SURVEY DOES NOT DEFINE BOUNDARY OR RIGHT OF WAY LINES. PARCEL LINES SHOWN HEREON ARE FOR GENERAL LOCATION AND INFORMATION PURPOSES ONLY TO LOCATE THE PROJECT SITE. SAID LINWORK IS BASED UPON SAN JOAQUIN COUNTY GIS PARCEL DATA.

-  CONTROL POINT
-  FOUND CHISELED X
-  CITY OF STOCKTON
-  RECORD OF SURVEY, SAN JOAQUIN COUNTY RECORDS



SCALE: 1" = 100'

