

# CORNER RECORD

Agency Index CR-24-498  
Document Number \_\_\_\_\_

City of STOCKTON County of SAN JOAQUIN, California

Brief Legal Description FOUND MONUMENTS SHOWN ON RS 40-171, SAN JOAQUIN COUNTY RECORDS.

### CORNER TYPE

### COORDINATES (Optional)



C.M. WEBER GRANT

- Government Corner
- Meander
- Rancho
- Control
- Property
- Other

Date of Survey OCTOBER 10, 2024

N. \_\_\_\_\_ E. \_\_\_\_\_

Elevation \_\_\_\_\_

Units  Metric  U.S. Survey Foot

Horizontal Datum \_\_\_\_\_

Zone \_\_\_\_\_ Epoch Date \_\_\_\_\_

Vertical Datum \_\_\_\_\_

Complies with Public Resources Code §§8801-8819

Complies with Public Resources Code §§8890-8902

PLS Act Ref.:  8765(d)  8771  8773  Other:

Corner/Monument:  Left as found  Established  Rebuilt  Pre-Construction

Found and tagged  Reestablished  Referenced  Post-Construction

Narrative of corner identified and monument as found, set, reset, replaced, or removed:

See sheet #2 for description(s):

THE FOUND MONUMENT(S) SHOWN ON THIS CORNER RECORD WERE FOUND IN THE APPROXIMATE LOCATION OF THE CORNER(S) ON RS 40-171, SAN JOAQUIN COUNTY SURVEYOR'S RECORDS. I DID NOT VERIFY THE IDENTITY AND VALIDITY OF THE MONUMENT FOUND AS ACTUALLY MARKING THE PROPERTY CORNER.

### SURVEYOR'S STATEMENT

This Corner Record was prepared by me or under my direction in conformance with the Professional Land Surveyors' Act on OCTOBER 11, 2024.  
Signed [Signature] P.L.S. or R.C.E. No. 8489



### COUNTY SURVEYOR'S STATEMENT

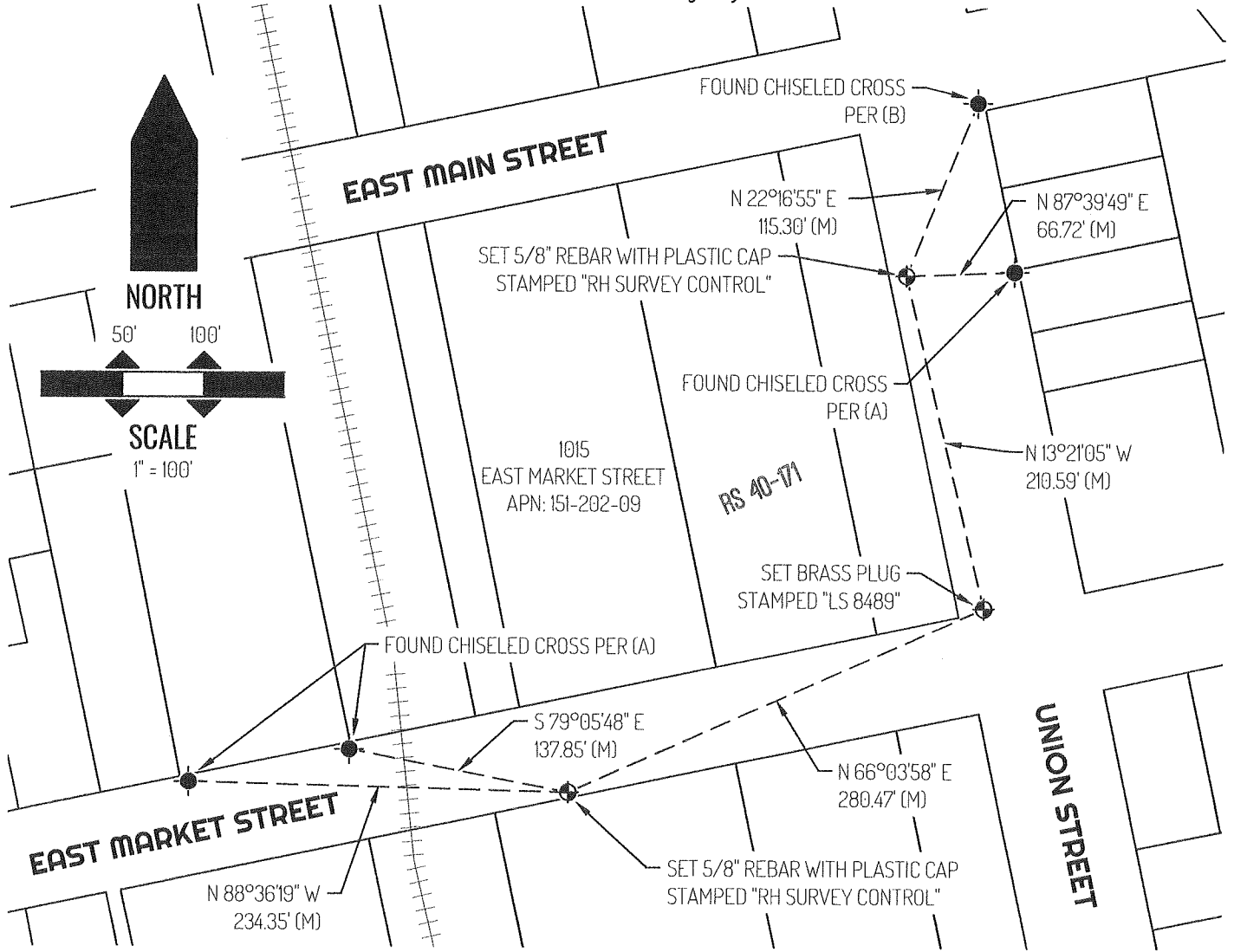
This Corner Record was received December 3, 2024 and examined and filed December 19, 2024.  
Signed James E. Hart P.L.S. or R.C.E. No. 8657  
Title County Surveyor



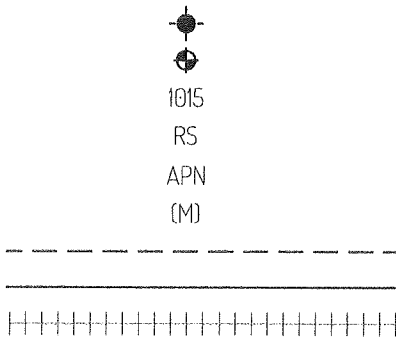
County Surveyor's Comment

Document Number

Agency Index



**LEGEND**



FOUND MONUMENT AS NOTED  
 SET CONTROL POINT  
 1015 REFERENCE STREET ADDRESS  
 RS RECORD OF SURVEY, SAN JOAQUIN COUNTY RECORDS  
 APN TAX ASSESSOR PARCEL NUMBER  
 (M) MEASURED  
 - - - - - TIE LINE  
 \_\_\_\_\_ LOT LINE  
 ||||| UNION PACIFIC RAILROAD

**SURVEYOR NOTE**

THIS CORNER RECORD IS BEING FILED TO FULFILL THE PRE-CONSTRUCTION MONUMENT PRESERVATION REQUIREMENTS OF SECTION 8771 OF THE CALIFORNIA BUSINESS AND PROFESSIONS CODE. IT IS NOT THE RESULT OF A FULLY RESOLVED BOUNDARY SURVEY FOR ANY PARCEL OF REAL PROPERTY.

**REFERENCES**

- (A) RECORD OF SURVEY BOOK 40, AT PAGE 171, SAN JOAQUIN COUNTY RECORDS
- (B) NOT OF RECORD