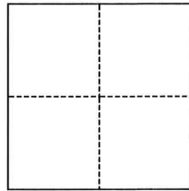


CORNER RECORD

Agency Index CR-24-495
Document Number _____

City of Stockton County of San Joaquin, California
Brief Legal Description _____ Lots 22, 23, 27, 28, and 29, M.&P. 23-10



CORNER TYPE

- Government Corner
- Meander
- Rancho
- Control
- Property
- Other

Date of Survey July 9, 2024

COORDINATES (Optional)

N. _____ E. _____
 Elevation _____
 Units Metric U.S. Survey Foot
 Horizontal Datum _____
 Zone _____ Epoch Date _____
 Vertical Datum _____
 Complies with Public Resources Code §§8801-8819
 Complies with Public Resources Code §§8890-8902

- PLS Act Ref.: 8765(d) 8771 8773 Other: _____
- Corner/Monument: Left as found Established Rebuilt Pre-Construction
 Found and tagged Reestablished Referenced Post-Construction

Narrative of corner identified and monument as found, set, reset, replaced, or removed:
 See sheet #2 for description(s):

SURVEYOR'S STATEMENT

This Corner Record was prepared by me or under my direction in conformance with the Professional Land Surveyors' Act on July 9, 2024.

Signed [Signature] P.L.S. or R.C.E. No. PLS 7889



COUNTY SURVEYOR'S STATEMENT

This Corner Record was received December 13, 2024 and examined and filed December 19, 2024.

Signed James E Hart P.L.S. or R.C.E. No. 8657
Title County Surveyor



County Surveyor's Comment _____

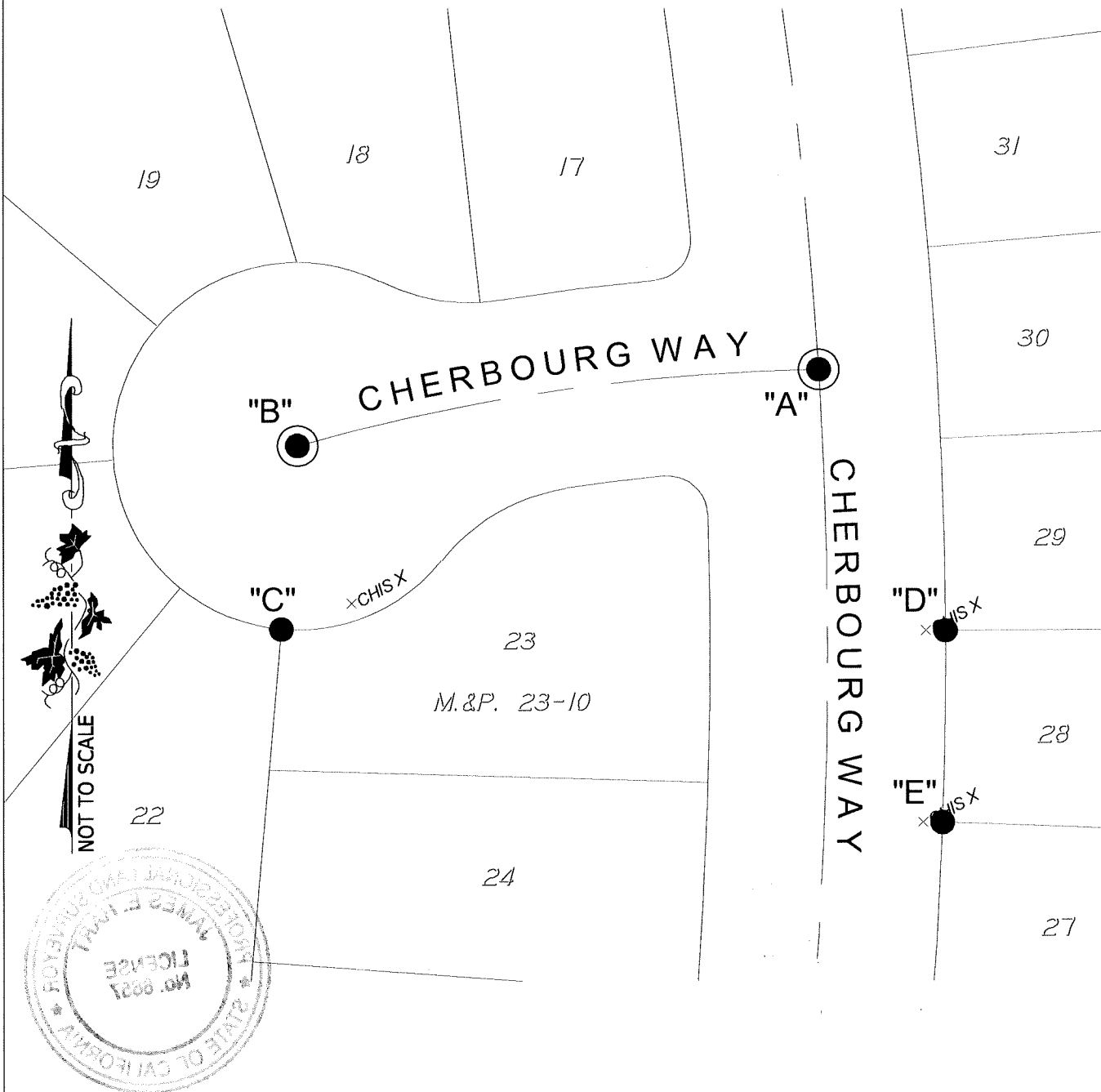
LEGEND:

M.&P. MAPS AND PLATS, BOOK AND PAGE, SAN JOAQUIN COUNTY RECORDS

- FOUND CHISELED CROSS
- ⊙ FOUND 3/4" IRON ROD IN MONUMENT WELL

DESCRIPTION:

THIS CORNER RECORD IS FOR THE PURPOSE OF MONUMENT PRESERVATION. REFERENCES WERE SET FOR FOUND MONUMENTS AS NOTED ON DIAGRAM. NO BOUNDARY ANALYSIS WAS PERFORMED. THIS CORNER RECORD DOES NOT VERIFY THE MONUMENT(S) TO BE IN THE CORRECT POSITION.



ANGLE AND DISTANCE TABLE

BS-O-FS	ANGLE	BS DISTANCE	FS DISTANCE
A-C-B	082°24'09"	133.64'	42.51'
A-D-B	051°25'43"	71.95'	167.34'
A-E-B	046°06'52"	118.41'	186.40'

S:\Projects\2017\17046-79\3_Drawings\17046-79_CR.dwg 08/12/24 11:20am-CARTER-XREFS: 17046-68_RC.dwg 17046-69_RC.dwg 17046-79_RC.dwg