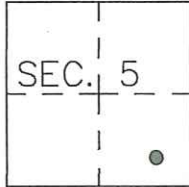


# CORNER RECORD

Agency Index CR-24-478

Document Number \_\_\_\_\_

City of Stockton County of San Joaquin, CaliforniaBrief Legal Description Lot 19, Louis Park Terrace, 11 M&P 62, City of Stockton**CORNER TYPE****COORDINATES (Optional)**
 Government Corner  Control   
 Meander  Property   
 Rancho  Other 

N. \_\_\_\_\_ E. \_\_\_\_\_

Elevation. \_\_\_\_\_

Units Metric  U.S. Survey Foot 

Horizontal Datum \_\_\_\_\_

Zone \_\_\_\_\_ Epoch Date \_\_\_\_\_

Vertical Datum \_\_\_\_\_

Date of Survey June 29, 2022 Complies with Public Resources Code §§8801-8819 Complies with Public Resources Code §§8890-8902

T.1N.,R.6E. M.D.M.

PLS Act Ref.:  8765(d)  8771  8773  Other:Corner/Monument:  Left as found  Established  Rebuilt  Pre-Construction Found and tagged  Reestablished  Referenced  Post-Construction

Narrative of corner identified and monument as found, set, reset, replaced, or removed:

 See sheet #2 for description(s):

Found Old 2" iron pipes per Louis Park Terrace Subdivision Map and 3/4" Iron Pins from Unit 1 of Riverview Terrace. These monuments were used to re-establish the block containing Lot 19. Set iron pins tagged L.S. 5443 as shown on accompanying plat.

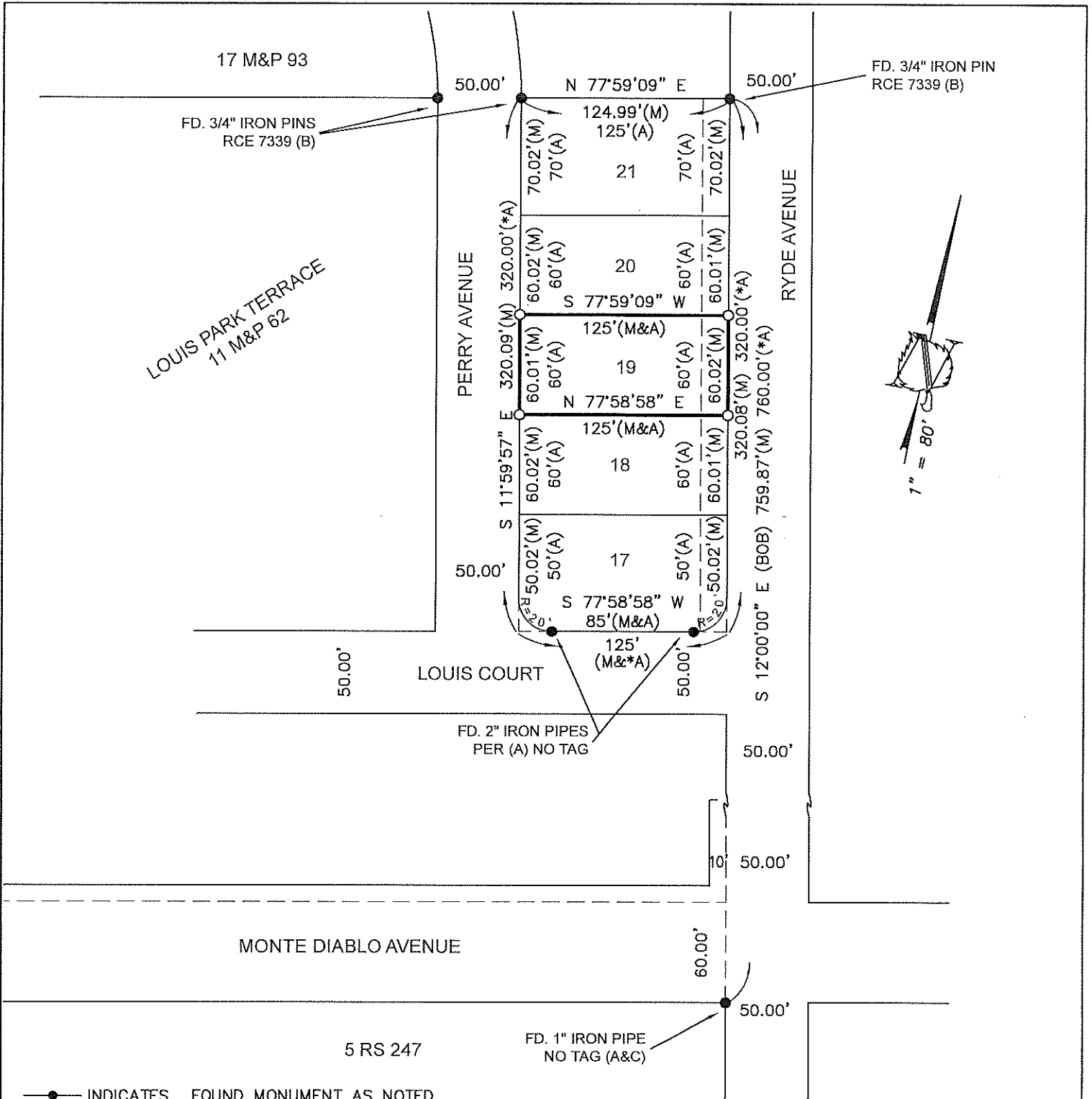
**SURVEYOR'S STATEMENT**

This Corner Record was prepared by me or under my direction in conformance with

the Professional Land Surveyor's Act on June 29, 2022Signed David L. Harris P.L.S. or R.C.E. No. PLS 5443**COUNTY SURVEYOR'S STATEMENT**This Corner Record was received November 22, 2024and examined and filed November 26, 2024Signed James E. Hart P.L.S. or R.C.E. No. 8657Title County Surveyor

County Surveyor's Comment \_\_\_\_\_





- INDICATES FOUND MONUMENT AS NOTED
- INDICATES SET 3/4" IRON PIN 30" LONG WITH TAG L.S. 5443
- (BOB) BASIS OF BEARINGS FROM (A)
- REFERENCES FROM SJCR
- (A) VOLUME 11 MAPS AND PLATS, PAGE 62
- (B) VOLUME 17 MAPS AND PLATS, PAGE 93
- (C) BOOK OF SURVEYS, VOL. 5, PAGE 247
- SJCR SAN JOAQUIN COUNTY RECORDS
- (\*A) CALCULATED FROM REFERENCE
- FD. INDICATES FOUND

**LOT 19 LOUIS PARK TERRACE,  
CITY OF STOCKTON, CALIFORNIA**



1121 OAKDALE RD., STE. 6 MODESTO, CA 95355  
 PH: (209) 526-9724 FX: (209) 526-0472

ASC No. 22-019