

CORNER RECORD

Agency Index CR-24-476

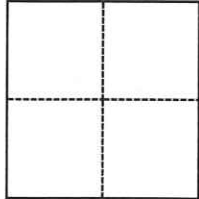
Document Number _____

City of STOCKTON County of SAN JOAQUIN, California

Brief Legal Description WEST LINE OF PARCEL "A" PER P.M. 1-82

CORNER TYPE

COORDINATES (Optional)



- Government Corner
- Meander
- Rancho
- Control
- Property
- Other

N. _____ E. _____

Elevation _____

Units Metric U.S. Survey Foot

Horizontal Datum _____

Zone _____ Epoch Date _____

Vertical Datum _____

Complies with Public Resources Code §§8801-8819

Complies with Public Resources Code §§8890-8902

PLS Act Ref.: 8765(d) 8771 8773 Other:

Corner/Monument: Left as found Established Rebuilt Pre-Construction

Found and tagged Reestablished Referenced Post-Construction

Narrative of corner identified and monument as found, set, reset, replaced, or removed:

See sheet #2 for description(s):

THIS DOCUMENT IS FOR THE PURPOSE OF RESETTING ANY MISSING OR OBLITERATED CORNERS FROM THE WEST LINE OF PARCEL "A", AS SHOWN IN BOOK 1 OF PARCEL MAPS, PAGE 82, SAN JOAQUIN COUNTY RECORDS.

SURVEYOR'S STATEMENT

This Corner Record was prepared by me or under my direction in conformance with

the Professional Land Surveyors' Act on November 4, 2024

Signed [Signature] P.L.S. or R.C.E. No. L.S. 7600



COUNTY SURVEYOR'S STATEMENT

This Corner Record was received November 6, 2024

and examined and filed November 25, 2024

Signed James E. Hart P.L.S. or R.C.E. No. 8657

Title County Surveyor

County Surveyor's Comment





WONG ENGINEERS, INC.

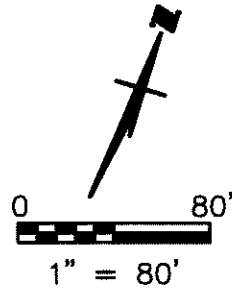
4578 FEATHER RIVER DRIVE, SUITE A
STOCKTON, CA 95219 (209) 476-0011
NOVEMBER 4, 2024 PAGE 2 OF 2

LEGEND:

- (M) MEASURED
- M&P MAPS & PLATS, BOOK-PAGE
- P.M. PARCEL MAPS, BOOK-PAGE
- SFN SEARCHED, FOUND NOTHING
- SJCR SAN JOAQUIN COUNTY RECORDS

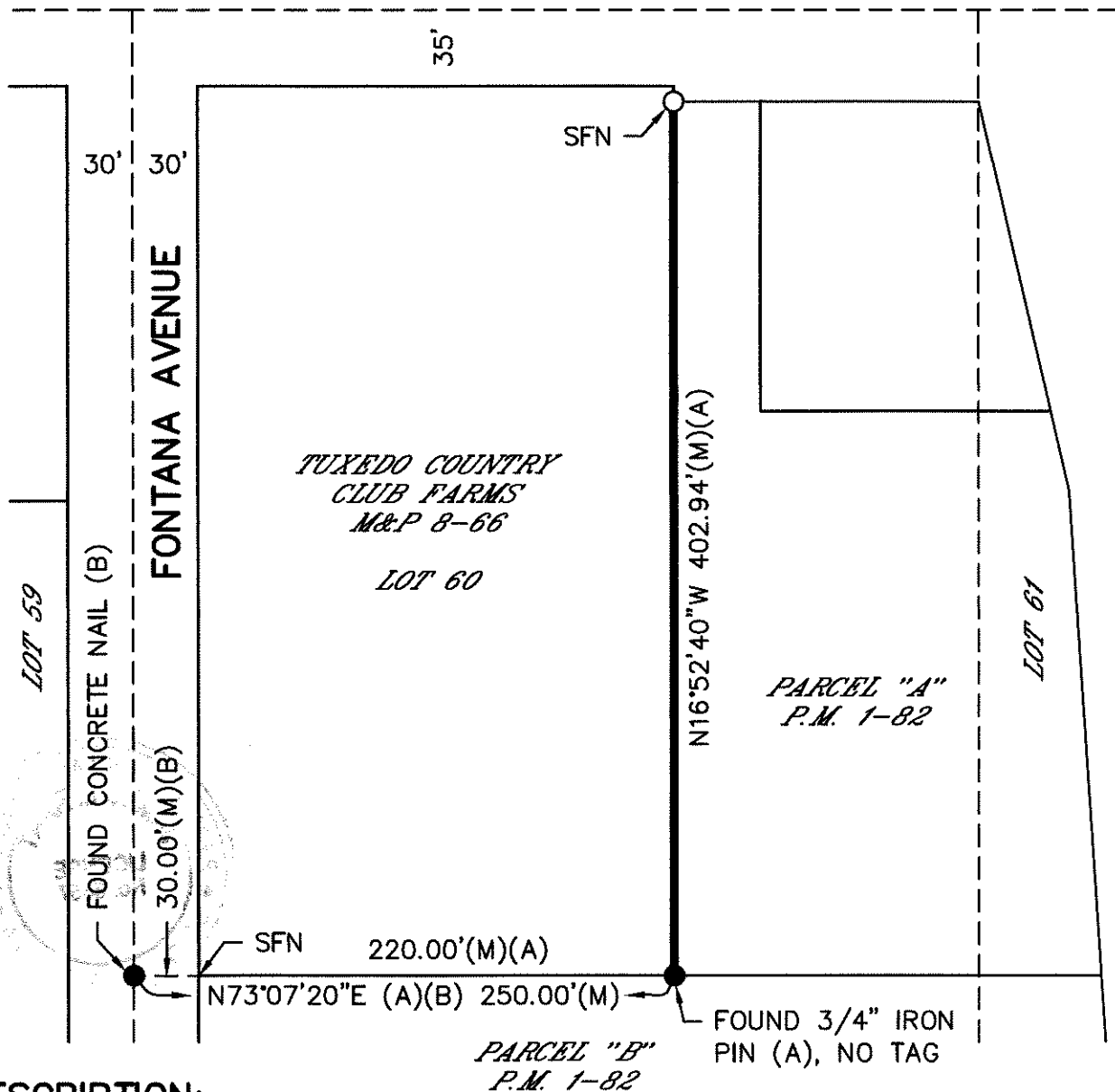
REFERENCES:

- (A) P.M. 1-82, SJCR
- (B) P.M. 14-114, SJCR



- FOUND MONUMENT AS NOTED
- SET MAG NAIL WITH STEEL WASHER STAMPED L.S. 7600

COUNTRY CLUB BOULEVARD



DESCRIPTION:

THIS DOCUMENT IS FOR THE PURPOSE OF RESETTING ANY MISSING OR OBLITERATED CORNERS OF WEST LINE OF PARCEL "A", AS SHOWN IN BOOK 1 OF PARCEL MAPS, PAGE 82, SAN JOAQUIN COUNTY RECORDS.