

CORNER RECORD

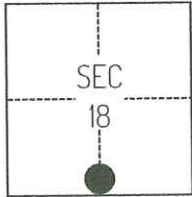
Agency Index CR-24-475
Document Number _____

City of STOCKTON County of SAN JOAQUIN, California

Brief Legal Description FOUND MONUMENTS SHOWN ON CORNER RECORD 24-231, SAN JOAQUIN COUNTY SURVEYOR'S RECORDS.

CORNER TYPE

COORDINATES (Optional)



C.M. WEBER GRANT

- Government Corner
- Meander
- Rancho
- Control
- Property
- Other

Date of Survey May 16, 2023

N. _____ E. _____

Elevation _____

Units Metric U.S. Survey Foot

Horizontal Datum _____

Zone _____ Epoch Date _____

Vertical Datum _____

Complies with Public Resources Code §§8801-8819

Complies with Public Resources Code §§8890-8902

PLS Act Ref.: 8765(d) 8771 8773 Other:

Corner/Monument: Left as found Established Rebuilt Pre-Construction

Found and tagged Reestablished Referenced Post-Construction

Narrative of corner identified and monument as found, set, reset, replaced, or removed:

See sheet #2 for description(s):

SURVEYOR'S STATEMENT

This Corner Record was prepared by me or under my direction in conformance with the Professional Land Surveyors' Act on August 29, 2024.

Signed [Signature] P.L.S. or R.C.E. No. 8489



COUNTY SURVEYOR'S STATEMENT

This Corner Record was received November 8, 2024

and examined and filed November 25, 2024.

Signed James E Hart P.L.S. or R.C.E. No. 8657

Title County Surveyor

County Surveyor's Comment



Document Number

Agency Index

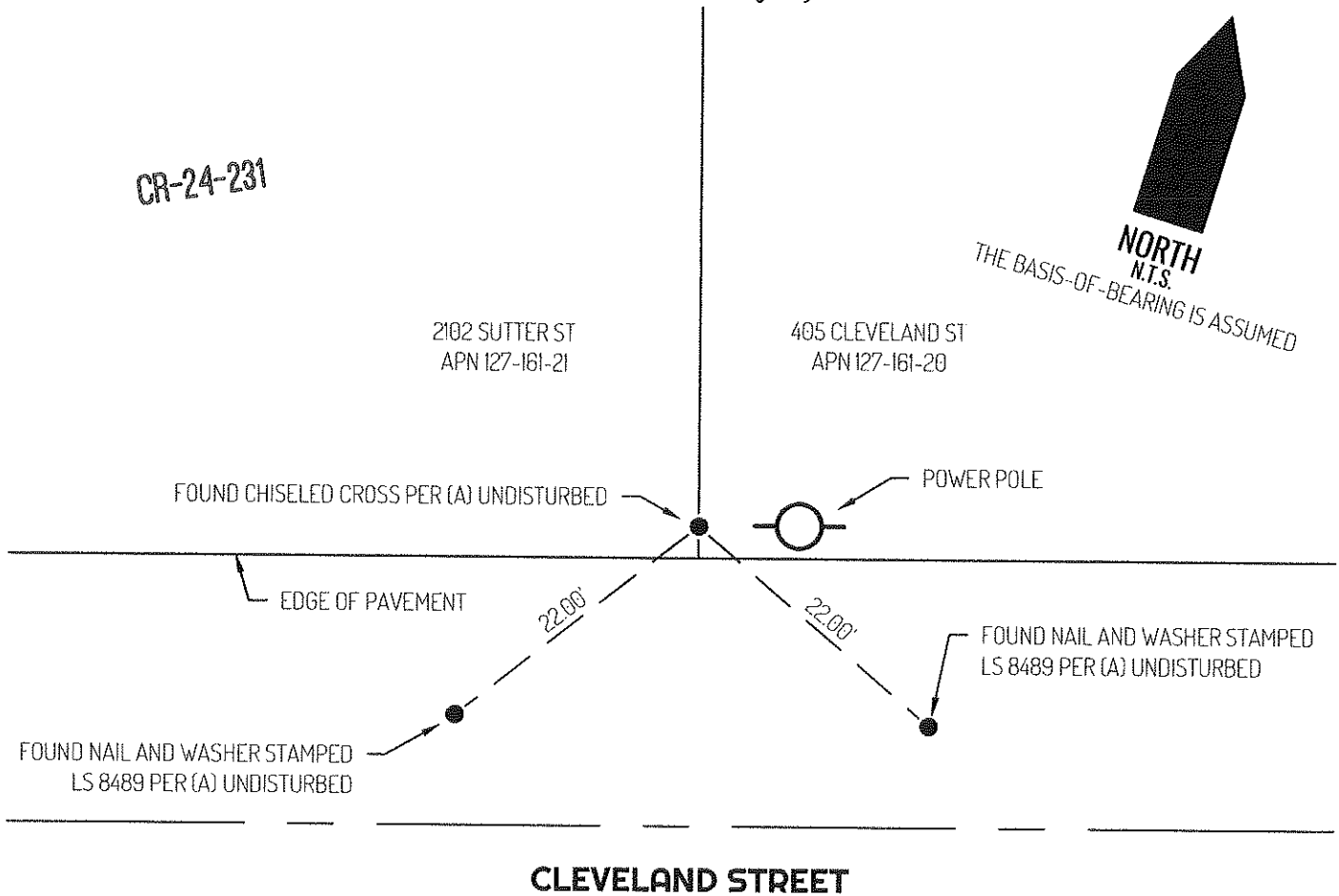
CR-24-231

2102 SUTTER ST
APN 127-161-21

405 CLEVELAND ST
APN 127-161-20

NORTH
N.T.S.

THE BASIS-OF-BEARING IS ASSUMED



CLEVELAND STREET

LEGEND

●	FOUND MONUMENT UNDISTURBED AS NOTED
2102	REFERENCE STREET ADDRESS
APN	TAX ASSESSOR PARCEL NUMBER
N.T.S.	NOT TO SCALE
CR	CORNER RECORD, SAN JOAQUIN COUNTY SUREVEYOR'S RECORDS
---	TIE LINE
====	LOT LINE
-----	RIGHT-OF-WAY CENTERLINE
CR-24-231	FILED SURVEY MAP REFERENCE

REFERENCE

(A) CORNER RECORD 24-231, SAN JOAQUIN COUNTY SUREVEYOR'S RECORDS