

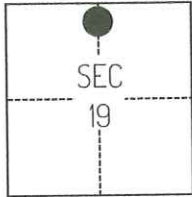
# CORNER RECORD

Agency Index CR-24-474  
 Document Number \_\_\_\_\_

City of STOCKTON County of SAN JOAQUIN, California  
 Brief Legal Description FOUND MONUMENTS SHOWN ON CR-24-230. SAN JOAQUIN COUNTY SURVEYOR'S RECORDS.

### CORNER TYPE

### COORDINATES (Optional)



C.M. WEBER GRANT

- Government Corner     Control  
 Meander                     Property  
 Rancho                         Other

Date of Survey May 16, 2023

N. \_\_\_\_\_ E. \_\_\_\_\_

Elevation \_\_\_\_\_

Units  Metric  U.S. Survey Foot

Horizontal Datum \_\_\_\_\_

Zone \_\_\_\_\_ Epoch Date \_\_\_\_\_

Vertical Datum \_\_\_\_\_

Complies with Public Resources Code §§8801-8819

Complies with Public Resources Code §§8890-8902

- PLS Act Ref.:  8765(d)     8771     8773     Other:  
 Corner/  
 Monument:  Left as found     Established     Rebuilt     Pre-Construction  
 Found and tagged     Reestablished     Referenced     Post-Construction

Narrative of corner identified and monument as found, set, reset, replaced, or removed:

See sheet #2 for description(s):

### SURVEYOR'S STATEMENT

This Corner Record was prepared by me or under my direction in conformance with  
 the Professional Land Surveyors' Act on August 28, 2024  
 Signed [Signature] P.L.S. or R.C.E. No. 8489

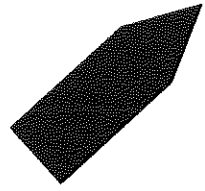
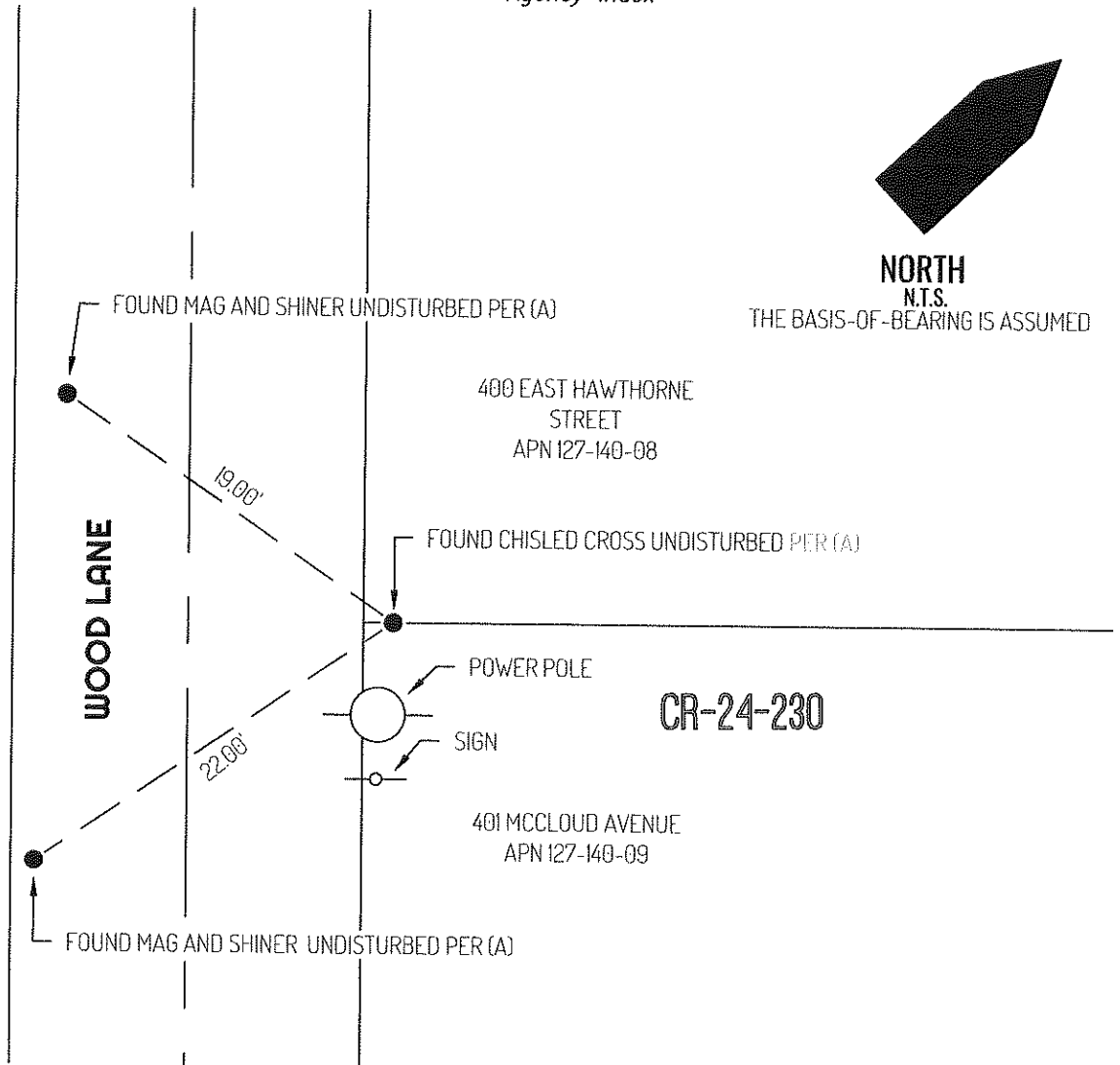


### COUNTY SURVEYOR'S STATEMENT

This Corner Record was received November 8, 2024  
 and examined and filed November 25, 2024  
 Signed James E. Hart P.L.S. or R.C.E. No. 8657  
 Title County Surveyor



County Surveyor's Comment



**NORTH**  
N.T.S.  
THE BASIS-OF-BEARING IS ASSUMED

**LEGEND**

●	FOUND MONUMENT AS NOTED
401	REFERENCE STREET ADDRESS
CR	CORNER RECORD, SAN JOAQUIN COUNTY SURVEYOR'S RECORDS
APN	TAX ASSESSOR PARCEL NUMBER
N.T.S	NOT TO SCALE
---	TIE LINE
---	LOT LINE
---	RIGHT-OF-WAY CENTERLINE
---	FILED SURVEY MAP REFERENCE

**CR-24-230**

**REFERENCE**

(A) CORNER RECORD 24-230, SAN JOAQUIN COUNTY SURVEYOR'S RECORDS