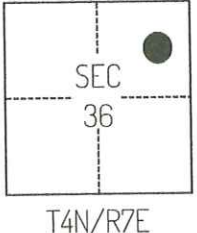


CORNER RECORD

Agency Index CR-24473
 Document Number _____

City of _____ County of SAN JOAQUIN, California

Brief Legal Description FOUND MONUMENTS SHOWN ON CORNER RECORD 24-232, SAN JOAQUIN COUNTY SURVEYOR'S RECORDS.



CORNER TYPE

Government Corner Control
 Meander Property
 Rancho Other

Date of Survey March 20, 2024

COORDINATES (Optional)

N. _____ E. _____
 Elevation _____
 Units Metric U.S. Survey Foot
 Horizontal Datum _____
 Zone _____ Epoch Date _____
 Vertical Datum _____
 Complies with Public Resources Code §§8801-8819
 Complies with Public Resources Code §§8890-8902

PLS Act Ref.: 8765(d) 8771 8773 Other:

Corner/Monument: Left as found Established Rebuilt Pre-Construction
 Found and tagged Reestablished Referenced Post-Construction

Narrative of corner identified and monument as found, set, reset, replaced, or removed:
 See sheet #2 for description(s):

SURVEYOR'S STATEMENT

This Corner Record was prepared by me or under my direction in conformance with
 the Professional Land Surveyors' Act on August 5, 2024
 Signed [Signature] P.L.S. or R.C.E. No. 8489

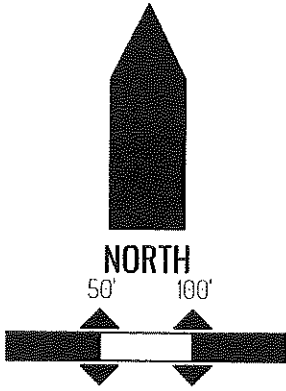
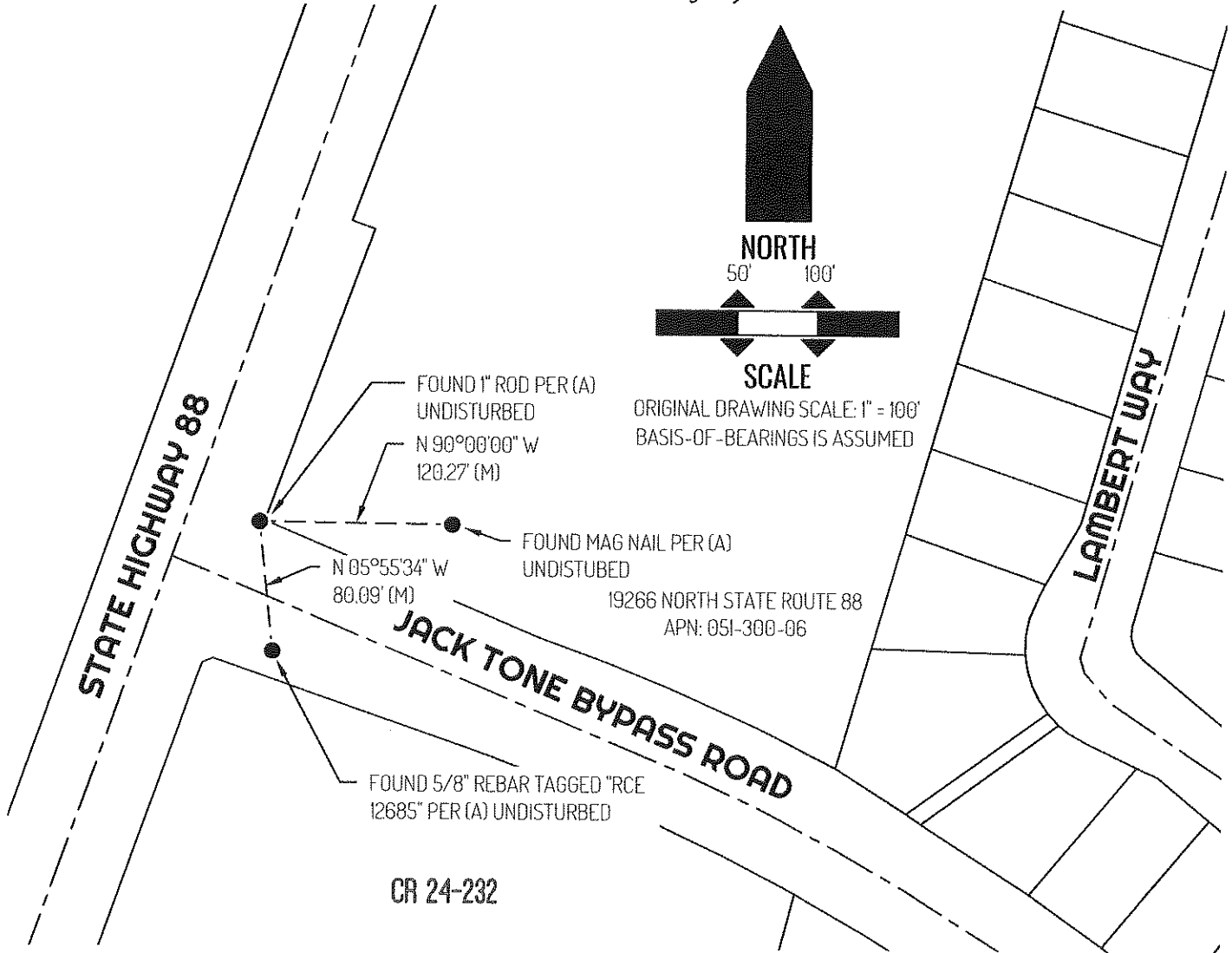


COUNTY SURVEYOR'S STATEMENT

This Corner Record was received November 8, 2024
 and examined and filed November 25, 2024
 Signed [Signature] P.L.S. or R.C.E. No. 8657
 Title County Surveyor



County Surveyor's Comment



ORIGINAL DRAWING SCALE: 1" = 100'
 BASIS-OF-BEARINGS IS ASSUMED

LEGEND

| | |
|-------|--|
| ● | FOUND MONUMENT AS NOTED |
| 19266 | REFERENCE STREET ADDRESS |
| APN | TAX ASSESSOR PARCEL NUMBER |
| CR | CORNER RECORD, SAN JOAQUIN COUNTY SURVEYOR'S RECORDS |
| (M) | MEASURED |
| — | LOT LINE |
| - - - | RIGHT-OF-WAY CENTERLINE |
| - - - | TIE LINE |

REFERENCE

(A) CORNER RECORD 24-232, SAN JOAQUIN COUNTY SURVEYOR'S RECORDS