

# CORNER RECORD

Agency Index CR-24-471  
Document Number \_\_\_\_\_

City of \_\_\_\_\_ County of SAN JOAQUIN, California

Brief Legal Description FOUND MONUMENTS ALONG DEL MAR AVENUE, PER M&P 44-40, SAN JOAQUIN COUNTY RECORDS.

### CORNER TYPE

### COORDINATES (Optional)



C.M. WEBER GRANT

- Government Corner
- Meander
- Rancho
- Control
- Property
- Other

Date of Survey SEPTEMBER 9, 2024

N. \_\_\_\_\_ E. \_\_\_\_\_

Elevation \_\_\_\_\_

Units  Metric  U.S. Survey Foot

Horizontal Datum \_\_\_\_\_

Zone \_\_\_\_\_ Epoch Date \_\_\_\_\_

Vertical Datum \_\_\_\_\_

Complies with Public Resources Code §§8801-8819

Complies with Public Resources Code §§8890-8902

PLS Act Ref.:  8765(d)  8771  8773  Other:

Corner/Monument:  Left as found  Established  Rebuilt  Pre-Construction

Found and tagged  Reestablished  Referenced  Post-Construction

Narrative of corner identified and monument as found, set, reset, replaced, or removed:

See sheet #2 for description(s):

THE FOUND MONUMENT(S) SHOWN ON THIS CORNER RECORD WERE FOUND IN THE APPROXIMATE LOCATION OF THE CORNER(S) ON M&P 44-40, SAN JOAQUIN COUNTY RECORDS. I DID NOT VERIFY THE IDENTITY AND VALIDITY OF THE MONUMENT FOUND AS ACTUALLY MARKING THE PROPERTY CORNER.

### SURVEYOR'S STATEMENT

This Corner Record was prepared by me or under my direction in conformance with the Professional Land Surveyors' Act on SEPTEMBER 16, 2024

Signed *Scott L. Blake* P.L.S. or R.C.E. No. 8489



### COUNTY SURVEYOR'S STATEMENT

This Corner Record was received November 8, 2024

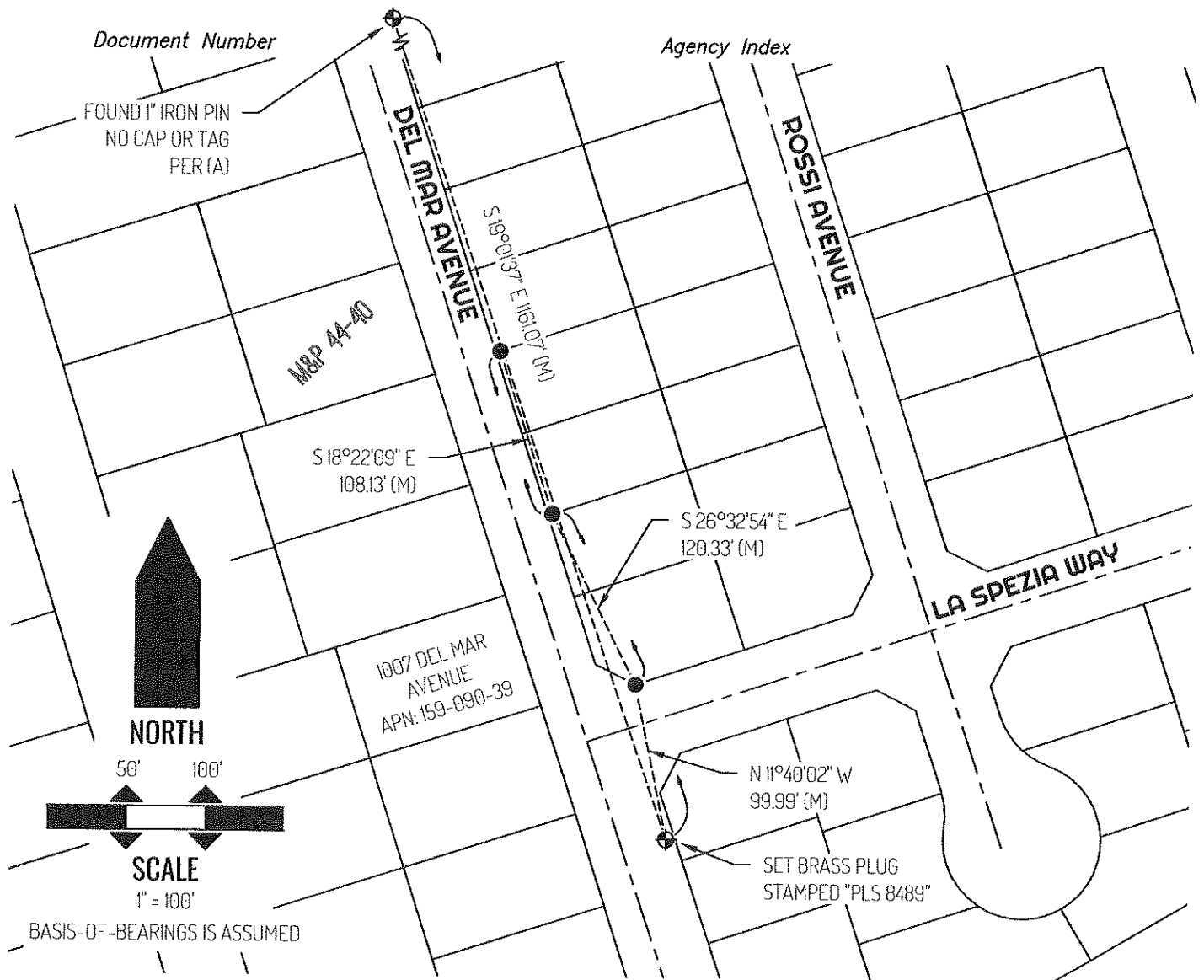
and examined and filed November 25, 2024

Signed *James E. Hart* P.L.S. or R.C.E. No. 8657

Title County Surveyor

County Surveyor's Comment





**LEGEND**

- FOUND 3/4" IRON PIPE CAPPED "LS 9099" PER (A)
- ⊕ CONTROL POINT AS NOTED
- 1007 REFERENCE STREET ADDRESS
- M&P MAPS & PLATS, SAN JOAQUIN COUNTY RECORDS
- APN TAX ASSESSOR PARCEL NUMBER
- (M) MEASURED
- TIE LINE
- LOT LINE
- - - RIGHT-OF-WAY CENTERLINE

**SURVEYOR NOTE**

THIS CORNER RECORD IS BEING FILED TO FULFILL THE PRE-CONSTRUCTION MONUMENT PRESERVATION REQUIREMENTS OF SECTION 8771 OF THE CALIFORNIA BUSINESS AND PROFESSIONS CODE. IT IS NOT THE RESULT OF A FULLY RESOLVED BOUNDARY SURVEY FOR ANY PARCEL OF REAL PROPERTY.

**REFERENCE**

(A) MAPS & PLATS BOOK 44, AT PAGE 40, SAN JOAQUIN COUNTY RECORDS