

CORNER RECORD

Agency Index

CR-24-470

Document Number

City of LODI County of SAN JOAQUIN, California

Brief Legal Description FOUND MONUMENTS NEAR THE INTERSECTION OF WOODROW STREET AND HALE ROAD.

CORNER TYPE

COORDINATES (Optional)



T3N/R7E

- Government Corner Control
 Meander Property
 Rancho Other

Date of Survey JULY 25, 2024

N. _____ E. _____

Elevation _____

Units Metric U.S. Survey Foot

Horizontal Datum _____

Zone _____ Epoch Date _____

Vertical Datum _____

Complies with Public Resources Code §§8801-8819

Complies with Public Resources Code §§8890-8902

PLS Act Ref.: 8765(d) 8771 8773 Other:

Corner/Monument: Left as found Established Rebuilt Pre-Construction

Found and tagged Reestablished Referenced Post-Construction

Narrative of corner identified and monument as found, set, reset, replaced, or removed:

See sheet #2 for description(s):

THE FOUND MONUMENT(S) SHOWN ON THIS CORNER RECORD WERE FOUND IN THE APPROXIMATE LOCATION OF THE CORNER(S) ON CR 24-269 AND M&P 17-110, SAN JOAQUIN COUNTY RECORDS. I DID NOT VERIFY THE IDENTITY AND VALIDITY OF THE MONUMENT FOUND AS ACTUALLY MARKING THE PROPERTY CORNER.

SURVEYOR'S STATEMENT

This Corner Record was prepared by me or under my direction in conformance with

the Professional Land Surveyors' Act on JULY 30, 2024

Signed *Scott L. Blake* P.L.S. or R.C.E. No. 8489



COUNTY SURVEYOR'S STATEMENT

This Corner Record was received November 8, 2024

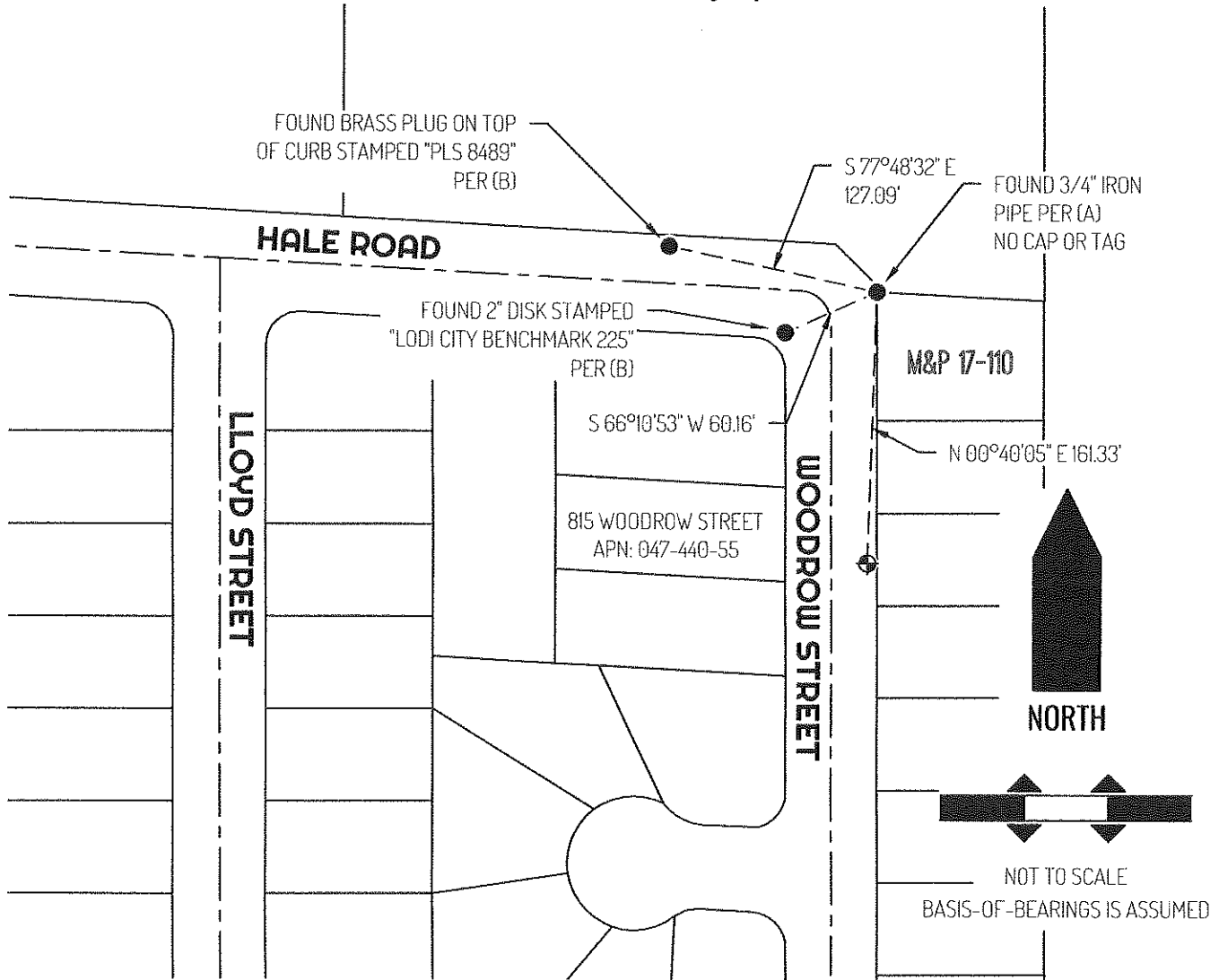
and examined and filed November 25, 2024

Signed *James E. Hart* P.L.S. or R.C.E. No. 8657

Title County Surveyor

County Surveyor's Comment





LEGEND

⊕	SET BRASS PLUG STAMPED "PLS 8489"
●	FOUND MONUMENT AS NOTED
815	REFERENCE STREET ADDRESS
M&P	MAPS & PLATS, SAN JOAQUIN COUNTY RECORDS
CR	CORNER RECORD, SAN JOAQUIN COUNTY SURVEYOR'S RECORDS
APN	TAX ASSESSOR PARCEL NUMBER
- - - - -	TIE LINE
—————	LOT LINE
- - - - -	RIGHT-OF-WAY CENTERLINE

SURVEYOR NOTES

THIS CORNER RECORD IS BEING FILED TO FULFILL THE PRE-CONSTRUCTION MONUMENT PRESERVATION REQUIREMENTS OF SECTION 8771 OF THE CALIFORNIA BUSINESS AND PROFESSIONS CODE. IT IS NOT THE RESULT OF A FULLY RESOLVED BOUNDARY SURVEY FOR ANY PARCEL OF REAL PROPERTY.

REFERENCES

- (A) MAPS & PLATS BOOK 17, AT PAGE 110, SAN JOAQUIN COUNTY RECORDS
- (B) CORNER RECORD 24-269, SAN JOAQUIN COUNTY SURVEYOR'S RECORDS