

CORNER RECORD

Agency Index

CR-24-469

Document Number

City of STOCKTON

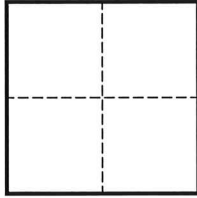
County of SAN JOAQUIN

, California

Brief Legal Description MONUMENT AT THE SOUTHERLY CUL-DE-SAC OF OPHIR STREET.

CORNER TYPE

COORDINATES (Optional)



- Government Corner
- Meander
- Rancho
- Control
- Property
- Other

N. _____ E. _____

Elevation _____

Units Metric U.S. Survey Foot

Horizontal Datum _____

Zone _____ Epoch Date _____

Vertical Datum _____

Complies with Public Resources Code §§8801-8819

Complies with Public Resources Code §§8890-8902

PLS Act Ref.: 8765(d) 8771 8773 Other:

Corner/
Monument: Left as found Established Rebuilt Pre-Construction
 Found and tagged Reestablished Referenced Post-Construction

Narrative of corner identified and monument as found, set, reset, replaced, or removed:

See sheet #2 for description(s):

FOUND 1/2" REBAR IN MONUMENT WELL AT SOUTHERLY CUL-DE-SAC OF OPHIR STREET, IN LIEU OF 3/4" IRON PIN TAGGED "R.C.E. 8189", PER RECORD OF SURVEY 31-143.

MONUMENT WAS REFERENCED PRIOR TO A WATER LINE REPLACEMENT PROJECT.

SURVEYOR'S STATEMENT

This Corner Record was prepared by me or under my direction in conformance with

the Professional Land Surveyors' Act on OCTOBER 21, 2024

Signed [Signature] P.L.S. or R.C.E. No. 9251



COUNTY SURVEYOR'S STATEMENT

This Corner Record was received November 14, 2024

and examined and filed November 25, 2024

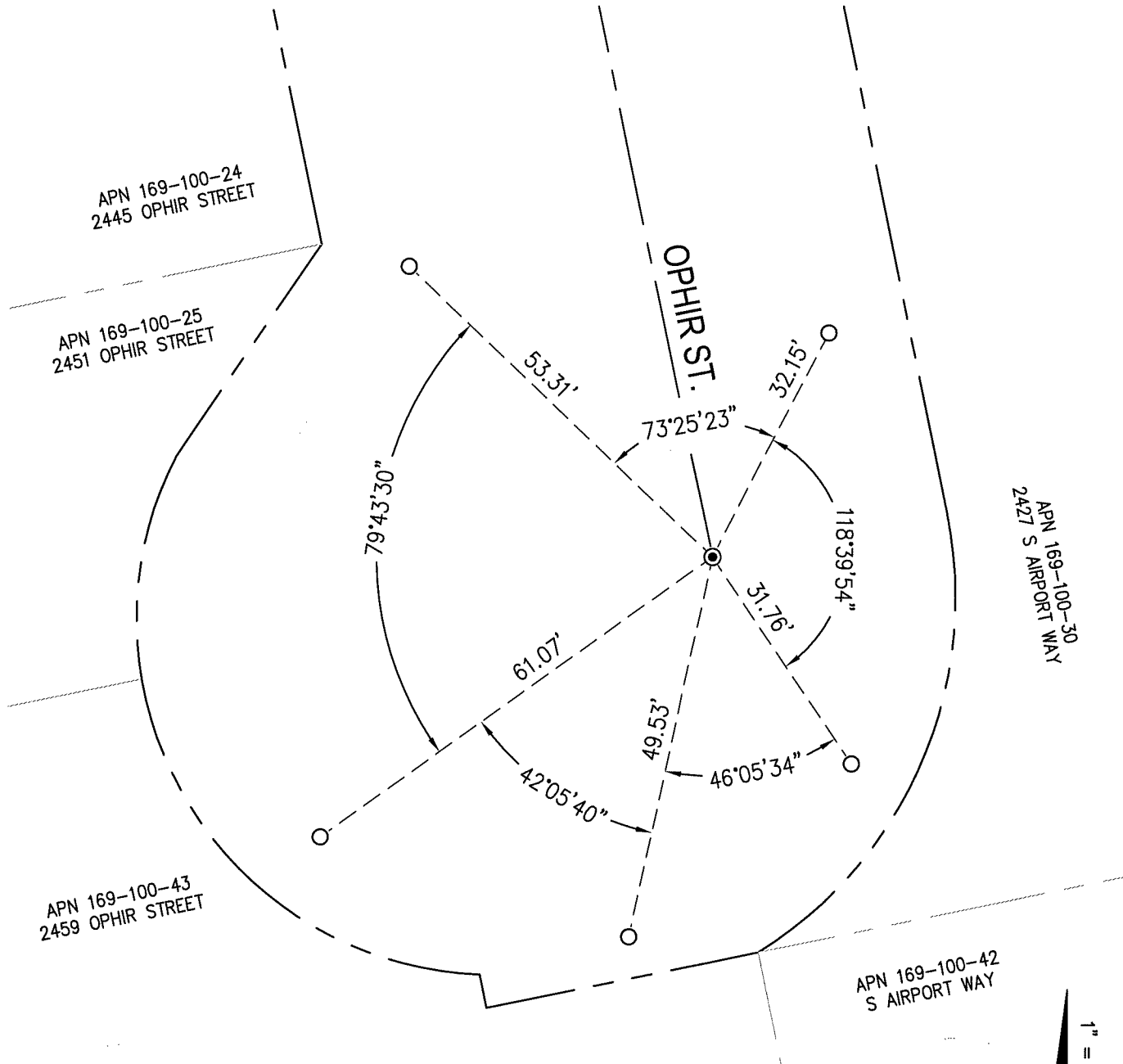
Signed James E. Hart P.L.S. or R.C.E. No. 8657

Title County Surveyor



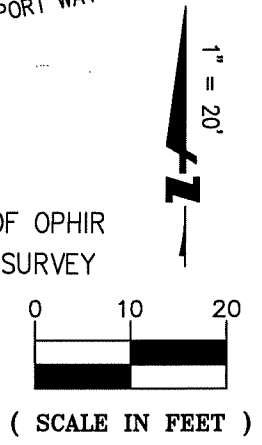
County Surveyor's Comment

[Empty dashed box for County Surveyor's Comment]



LEGEND

- FOUND 1/2" REBAR IN MONUMENT WELL AT THE SOUTHERLY CUL-DE-SAC OF OPHIR STREET, IN LIEU OF 3/4" IRON PIN TAGGED "R.C.E. 8189", PER RECORD OF SURVEY 31-143.
- SET MAG NAIL & WASHER IN TOP OF CONCRETE CURB



1730 N. FIRST STREET
 SUITE 600
 SAN JOSE, CA 95112
 (408) 467-9100
 www.bkf.com

SUBJECT PRE-CONSTRUCTION CORNER RECORD AT
SLY CUL-DE-SAC OF OPHIR ST

JOB NO. 20191483 - MON PRESERVATION

BY AV APPR. RV DATE 10-21-2024

K:\2019\191483_MON_PRES\SURV\DWG\354_STK-210_ORPHIR_PRE.DWG