

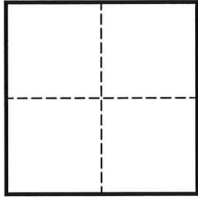
# CORNER RECORD

Agency Index CR-24-467  
Document Number \_\_\_\_\_

City of \_\_\_\_\_ County of SAN JOAQUIN, California  
Brief Legal Description MONUMENT ALONG THE CL OF EIGHTH ST, SWLY OF THE CL OF AIRPORT WAY.

### CORNER TYPE

### COORDINATES (Optional)



- Government Corner
- Meander
- Rancho
- Control
- Property
- Other

N. \_\_\_\_\_ E. \_\_\_\_\_  
 Elevation \_\_\_\_\_  
 Units  Metric  U.S. Survey Foot  
 Horizontal Datum \_\_\_\_\_  
 Zone \_\_\_\_\_ Epoch Date \_\_\_\_\_  
 Vertical Datum \_\_\_\_\_  
 Complies with Public Resources Code §§8801-8819  
 Complies with Public Resources Code §§8890-8902


Date of Survey FEBRUARY 12, 2024

PLS Act Ref.:  8765(d)  8771  8773  Other:  
 Corner/Monument:  Left as found  Established  Rebuilt  Pre-Construction  
 Found and tagged  Reestablished  Referenced  Post-Construction

Narrative of corner identified and monument as found, set, reset, replaced, or removed:  
 See sheet #2 for description(s):

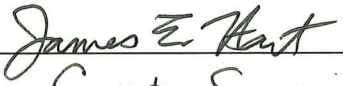
FOUND 2-1/2" BRASS DISC, STAMPED "CITY OF STOCKTON SURVEY MONUMENT 5S-19" IN MONUMENT WELL, ALONG THE CENTERLINE OF EIGHTH STREET, SOUTHWESTERLY OF THE CL OF AIRPORT WAY, PER RECORD OF SURVEY 35-5.  
  
MONUMENT WAS REFERENCED PRIOR TO A WATER LINE REPLACEMENT PROJECT.

### SURVEYOR'S STATEMENT

This Corner Record was prepared by me or under my direction in conformance with the Professional Land Surveyors' Act on OCTOBER 21, 2024  
 Signed  P.L.S. or R.C.E. No. 9251



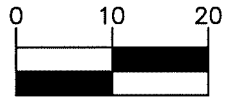
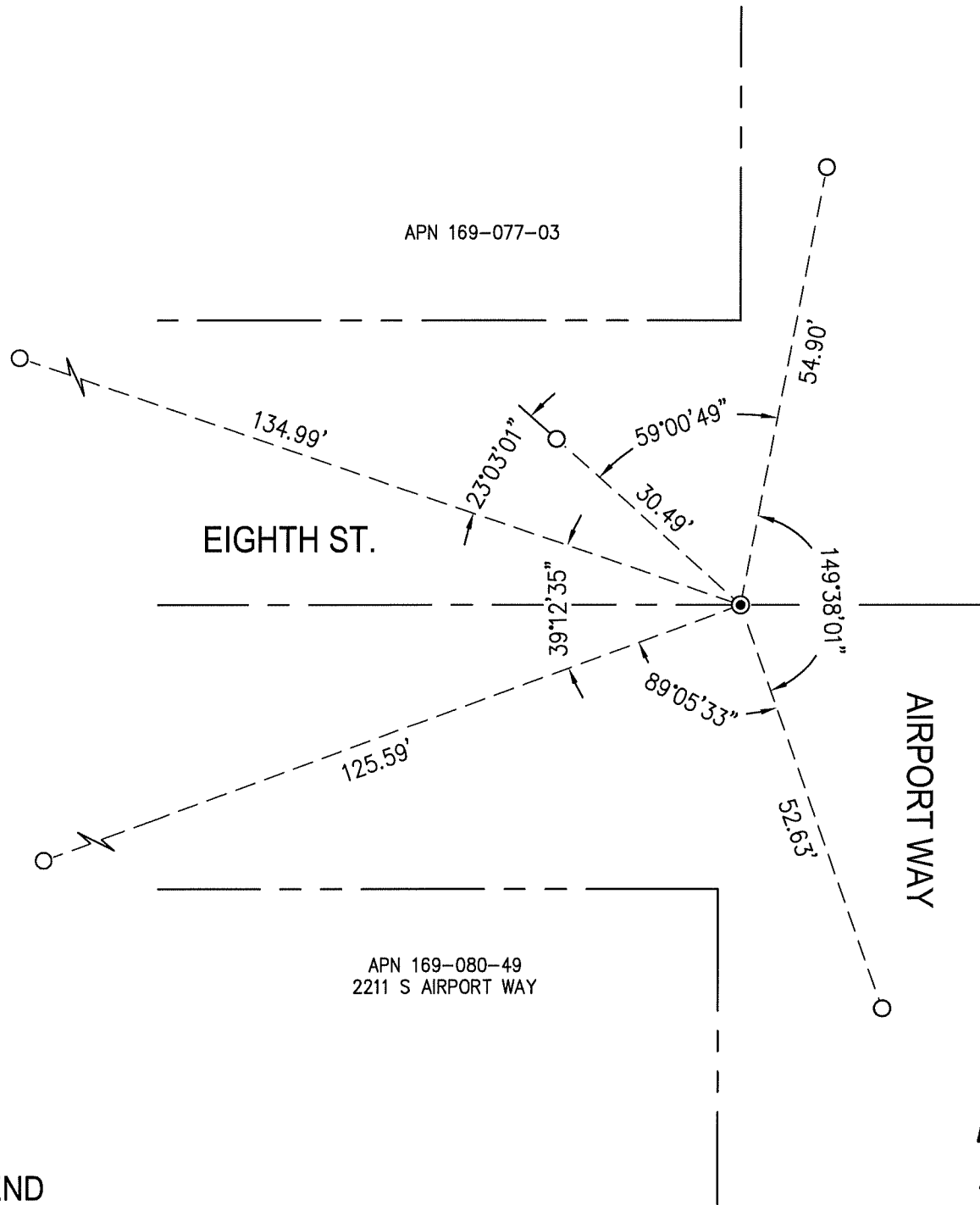
### COUNTY SURVEYOR'S STATEMENT

This Corner Record was received November 14, 2024  
 and examined and filed November 25, 2024  
 Signed  P.L.S. or R.C.E. No. 8657  
 Title County Surveyor



### County Surveyor's Comment

Empty dashed box for County Surveyor's Comment.



( SCALE IN FEET )

**LEGEND**

- FOUND 2 1/2" BRASS DISK, STAMPED "CITY OF STOCKTON SURVEY MONUMENT 5S-19" IN MONUMENT WELL, PER RECORD OF SURVEY 35-5.
- SET MAG NAIL & WASHER IN TOP OF CONCRETE CURB

K:\2019\191483\_MON\_PRES\SUR\DWG\354\_STK-210\_ORPHR\_PRE.DWG

**BKF**  
 1730 N. FIRST STREET  
 SUITE 600  
 SAN JOSE, CA 95112  
 (408) 467-9100  
 www.bkf.com

SUBJECT PRE-CONSTRUCTION CORNER RECORD ALONG CENTERLINE OF EIGHTH STREET, SWLY OF AIRPORT

JOB NO. 20191483 - MON PRESERVATION

BY AV APPR. RV DATE 10-21-2024