

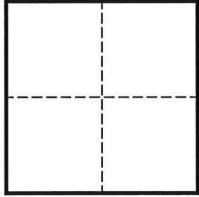
CORNER RECORD

Agency Index CR-24-466
Document Number _____

City of _____ County of SAN JOAQUIN, California
Brief Legal Description MONUMENT AT THE INTERSECTION OF OPHIR STREET AND EIGHTH STREET.

CORNER TYPE

COORDINATES (Optional)



- Government Corner
- Meander
- Rancho
- Control
- Property
- Other

N. _____ E. _____
 Elevation _____
 Units Metric U.S. Survey Foot
 Horizontal Datum _____
 Zone _____ Epoch Date _____
 Vertical Datum _____
 Complies with Public Resources Code §§8801-8819
 Complies with Public Resources Code §§8890-8902

Date of Survey FEBRUARY 12, 2024

PLS Act Ref.: 8765(d) 8771 8773 Other:
 Corner/Monument: Left as found Established Rebuilt Pre-Construction
 Found and tagged Reestablished Referenced Post-Construction

Narrative of corner identified and monument as found, set, reset, replaced, or removed:
 See sheet #2 for description(s):

FOUND 1/2" REBAR WITH PUNCH IN MONUMENT WELL AT THE WESTERLY INTERSECTION OF EIGHTH STREET AND OPHIR STREET.

MONUMENT WAS REFERENCED PRIOR TO A WATER LINE REPLACEMENT PROJECT.

SURVEYOR'S STATEMENT

This Corner Record was prepared by me or under my direction in conformance with
 the Professional Land Surveyors' Act on OCTOBER 21, 2024
 Signed *[Signature]* P.L.S. or R.C.E. No. 9251



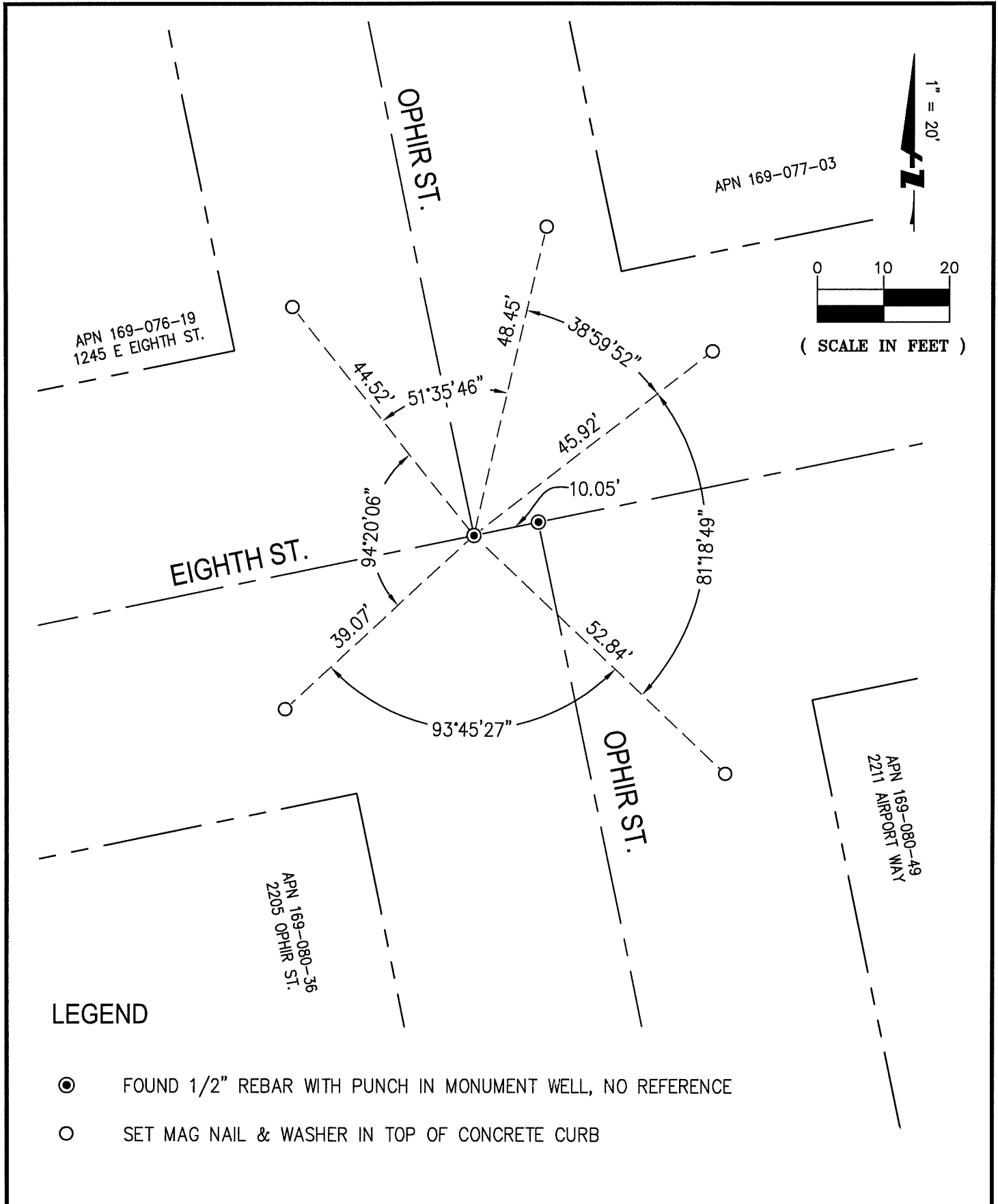
COUNTY SURVEYOR'S STATEMENT

This Corner Record was received November 14, 2024
 and examined and filed November 25, 2024
 Signed *James E Hart* P.L.S. or R.C.E. No. 8657
 Title County Surveyor



County Surveyor's Comment

Empty dashed box for County Surveyor's Comment.



LEGEND

- FOUND 1/2" REBAR WITH PUNCH IN MONUMENT WELL, NO REFERENCE
- SET MAG NAIL & WASHER IN TOP OF CONCRETE CURB



1730 N. FIRST STREET
 SUITE 600
 SAN JOSE, CA 95112
 (408) 467-9100
 www.bkf.com

SUBJECT PRE-CONSTRUCTION CORNER RECORD AT
INTERSECTION OF OPHIR STREET AND 8TH STREET

JOB NO. 20191483 - MON PRESERVATION
 BY AV APPR. RV DATE 10-21-2024

K:\2019\191483_MON_PRES\SUR(DWG)\354_STK-210_ORPHIR_PRE.DWG