

# CORNER RECORD

Agency Index CR-24-463

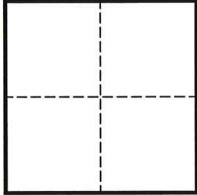
Document Number \_\_\_\_\_

City of STOCKTON County of SAN JOAQUIN, California

Brief Legal Description MONUMENT AT THE NORTHERLY CUL-DE-SAC OF OPHIR STREET

### CORNER TYPE

### COORDINATES (Optional)



- Government Corner
- Meander
- Rancho
- Control
- Property
- Other

N. \_\_\_\_\_ E. \_\_\_\_\_

Elevation \_\_\_\_\_

Units  Metric  U.S. Survey Foot

Horizontal Datum \_\_\_\_\_

Zone \_\_\_\_\_ Epoch Date \_\_\_\_\_

Vertical Datum \_\_\_\_\_

Complies with Public Resources Code §§8801-8819

Complies with Public Resources Code §§8890-8902

PLS Act Ref.:  8765(d)  8771  8773  Other:

Corner/Monument:  Left as found  Established  Rebuilt  Pre-Construction

Found and tagged  Reestablished  Referenced  Post-Construction

Narrative of corner identified and monument as found, set, reset, replaced, or removed:

See sheet #2 for description(s):

FOUND 1/2" REBAR WITH PUNCH IN MONUMENT WELL AT THE NORTHERLY CUL-DE-SAC OF OPHIR STREET, NO REFERENCE.

MONUMENT WAS REFERENCED PRIOR TO A WATER LINE REPLACEMENT PROJECT.

### SURVEYOR'S STATEMENT

This Corner Record was prepared by me or under my direction in conformance with

the Professional Land Surveyors' Act on OCTOBER 21, 2024

Signed [Signature] P.L.S. or R.C.E. No. 9251



### COUNTY SURVEYOR'S STATEMENT

This Corner Record was received November 14, 2024

and examined and filed November 25, 2024

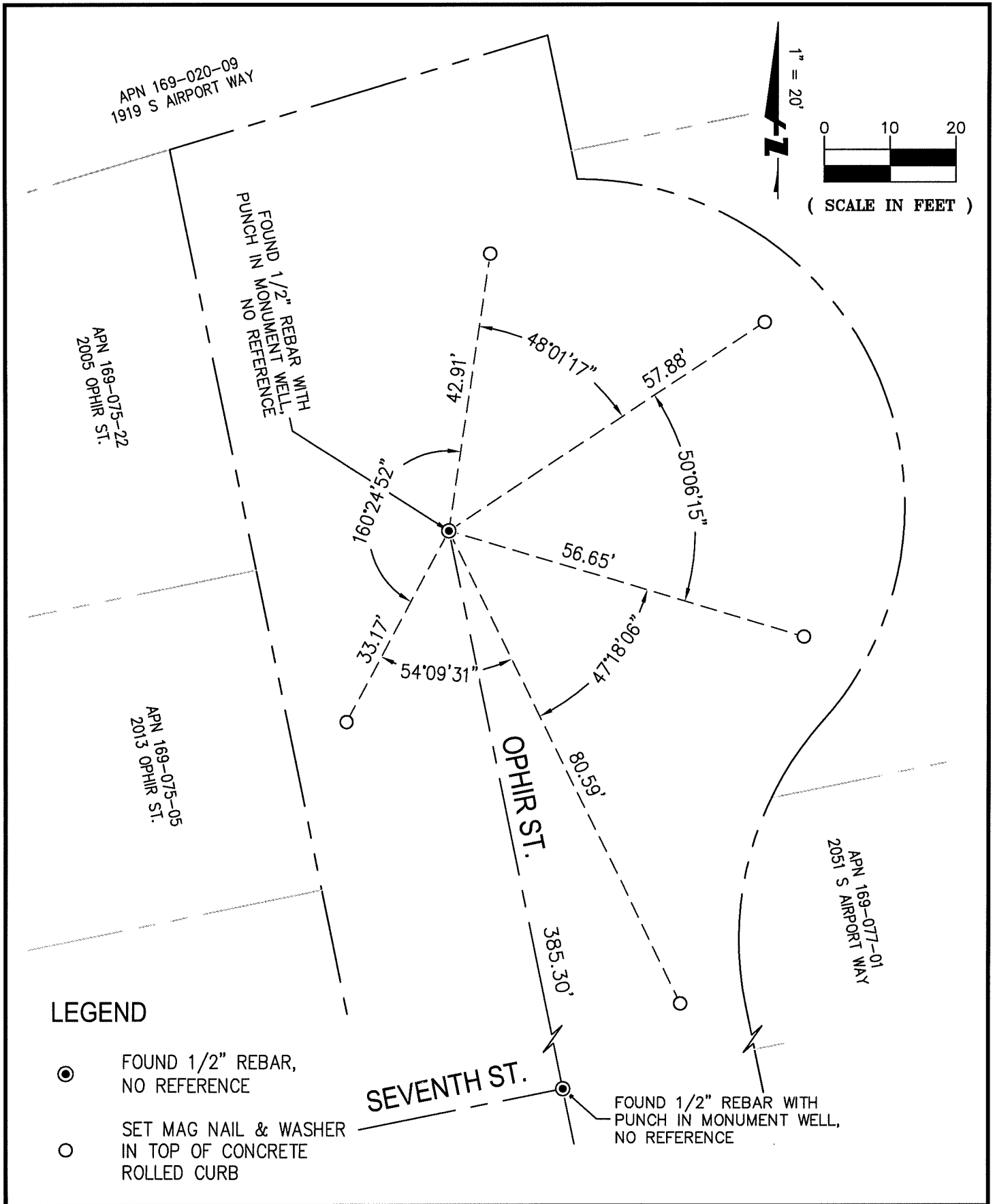
Signed James E. Hart P.L.S. or R.C.E. No. 8657

Title County Surveyor



### County Surveyor's Comment

[Empty dashed box for County Surveyor's Comment]



**BKF**

1730 N. FIRST STREET  
 SUITE 600  
 SAN JOSE, CA 95112  
 (408) 467-9100  
 www.bkf.com

SUBJECT PRE-CONSTRUCTION CORNER RECORD  
OPHIR STREET CUL-DE-SAC

JOB NO. 20191483 - MON PRESERVATION  
 BY AV APPR. RV DATE 10-21-2024