

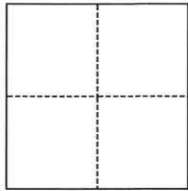
CORNER RECORD

Agency Index CR-24-459

Document Number _____

City of Stockton County of San Joaquin, California

Brief Legal Description Lots 398, 399, 400, 401, 440, 441, M.&P. 22-96



CORNER TYPE

- Government Corner
- Meander
- Rancho
- Control
- Property
- Other

Date of Survey September 25, 2024

COORDINATES (Optional)

N. _____ E. _____

Elevation _____

Units Metric U.S. Survey Foot

Horizontal Datum _____

Zone _____ Epoch Date _____

Vertical Datum _____

Complies with Public Resources Code §§8801-8819

Complies with Public Resources Code §§8890-8902

PLS Act Ref.:

8765(d)

8771

8773

Other:

Corner/
Monument:

Left as found

Established

Rebuilt

Pre-Construction

Found and tagged

Reestablished

Referenced

Post-Construction

Narrative of corner identified and monument as found, set, reset, replaced, or removed:

See sheet #2 for description(s):

SURVEYOR'S STATEMENT

This Corner Record was prepared by me or under my direction in conformance with

the Professional Land Surveyors' Act on September 25, 2024

Signed _____

P.L.S. or R.C.E. No. _____

PLS 7889



COUNTY SURVEYOR'S STATEMENT

This Corner Record was received October 28, 2024

and examined and filed November 22, 2024

Signed _____

P.L.S. or R.C.E. No. _____

8657

Title _____

County Surveyor

County Surveyor's Comment _____



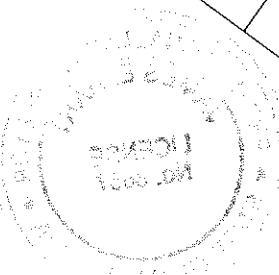
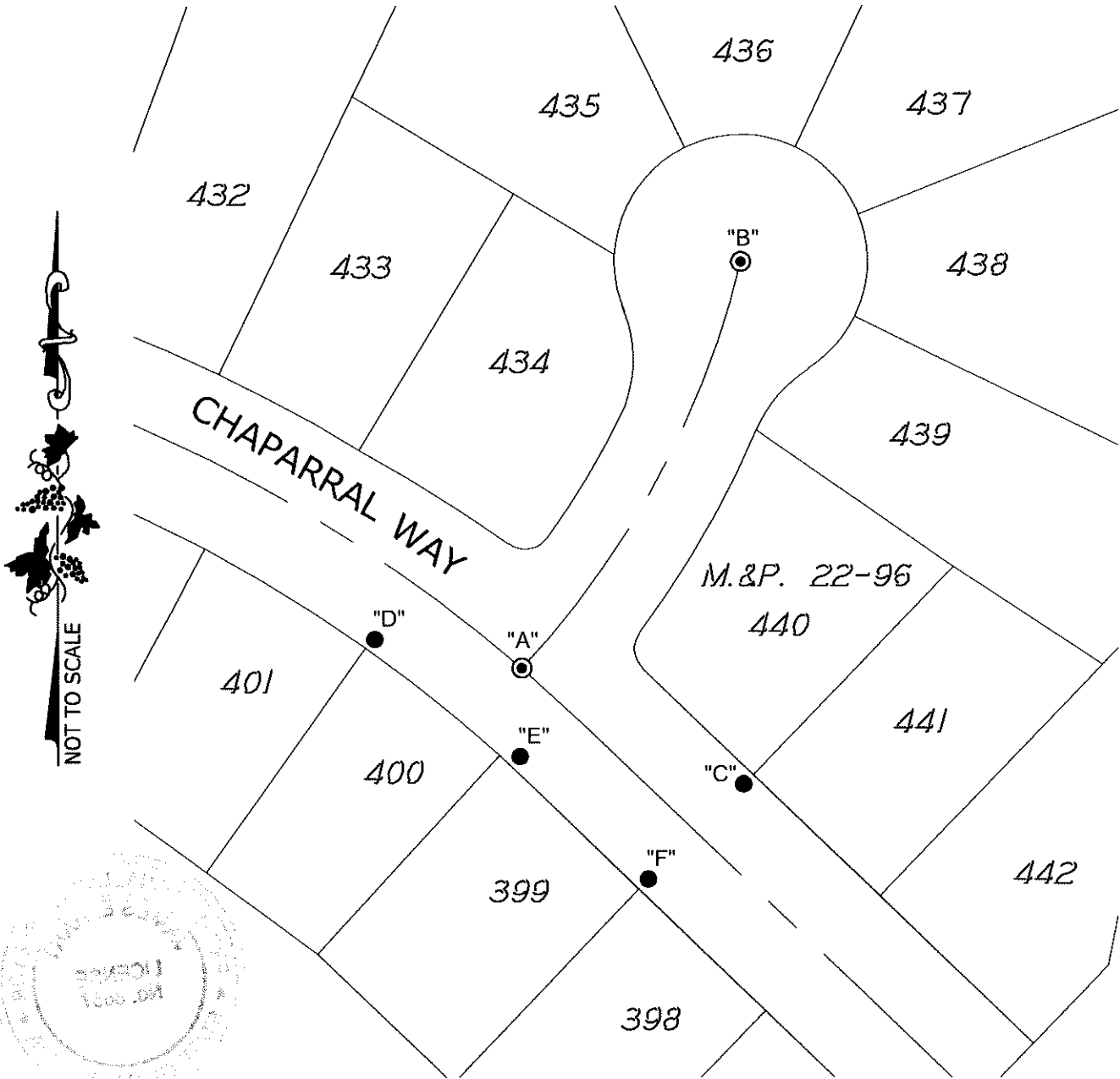
LEGEND:

M.&P. MAPS AND PLATS, BOOK AND PAGE, SAN JOAQUIN COUNTY RECORDS

- FOUND CHISELED CROSS
- ⊙ FOUND 3/4" IRON ROD TAGGED "R.C.E. 15831" IN MONUMENT WELL

DESCRIPTION:

THIS CORNER RECORD IS FOR THE PURPOSE OF MONUMENT PRESERVATION. REFERENCES WERE SET FOR FOUND MONUMENTS AS NOTED ON DIAGRAM. NO BOUNDARY ANALYSIS WAS PERFORMED. THIS CORNER RECORD DOES NOT VERIFY THE MONUMENT(S) TO BE IN THE CORRECT POSITION.



ANGLE AND DISTANCE TABLE

BS-O-FS	ANGLE	BS DISTANCE	FS DISTANCE
A-C-B	062°05'53"	93.00'	193.48'
A-D-B	056°44'55"	55.77'	195.11'
A-E-B	022°59'13"	32.84'	200.76'
A-F-B	039°31'14"	91.41'	231.32'

S:\Projects\2017\17046-90\3_Drawings\17046-89_CR.dwg 09/26/24 4:17pm - CARTER-XREFS: 17046-89_HC.dwg