

CORNER RECORD

Agency Index CR-24-419

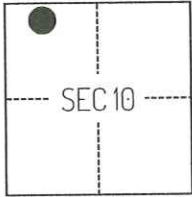
Document Number _____

City of STOCKTON County of SAN JOAQUIN, California

Brief Legal Description FOUND MONUMENTS SHOWN ON CORNER RECORD 24-207, SAN JOAQUIN COUNTY SURVEYOR'S RECORDS.

CORNER TYPE

COORDINATES (Optional)



C.M. WEBER GRANT

- Government Corner Control
 Meander Property
 Rancho Other

Date of Survey February 21, 2024

N. _____ E. _____

Elevation _____

Units Metric U.S. Survey Foot

Horizontal Datum _____

Zone _____ Epoch Date _____

Vertical Datum _____

Complies with Public Resources Code §§8801-8819

Complies with Public Resources Code §§8890-8902

PLS Act Ref.:

8765(d)

8771

8773

Other:

Corner/
Monument:

Left as found

Established

Rebuilt

Pre-Construction

Found and tagged

Reestablished

Referenced

Post-Construction

Narrative of corner identified and monument as found, set, reset, replaced, or removed:

See sheet #2 for description(s):

SURVEYOR'S STATEMENT

This Corner Record was prepared by me or under my direction in conformance with

the Professional Land Surveyors' Act on June 20, 2024

Signed Scott L. Blake P.L.S. or R.C.E. No. 8489



COUNTY SURVEYOR'S STATEMENT

This Corner Record was received October 25, 2024

and examined and filed November 5, 2024

Signed James E. Hart P.L.S. or R.C.E. No. 8657

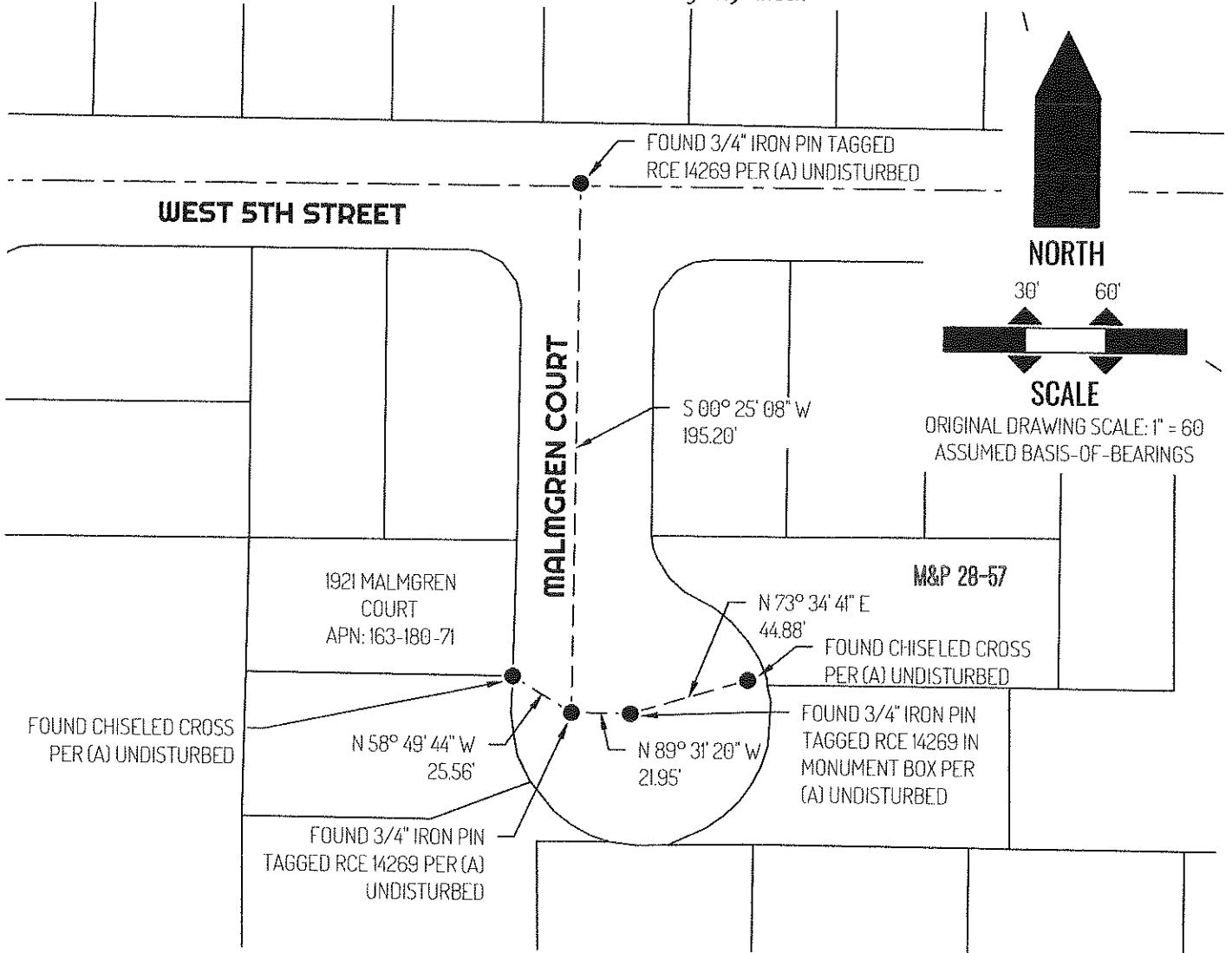
Title County Surveyor

County Surveyor's Comment



Document Number

Agency Index



LEGEND

- FOUND MONUMENT AS NOTED
- 1921 REFERENCE STREET ADDRESS
- APN TAX ASSESSOR PARCEL NUMBER
- M&P MAPS & PLATS, SAN JOAQUIN COUNTY RECORDS
- TIE LINE
- ===== LOT LINE
- RIGHT-OF-WAY CENTERLINE

REFERENCE

(A) CORNER RECORD 24-207, SAN JOAQUIN COUNTY SURVEYOR'S RECORDS