

CORNER RECORD

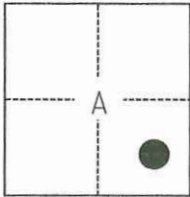
Agency Index CR-24-414
 Document Number _____

City of STOCKTON County of SAN JOAQUIN, California

Brief Legal Description FOUND MONUMENTS ALONG THE CENTERLINE AND RIGHT-OF-WAY LINE OF GRIFFIN POINT.

CORNER TYPE

COORDINATES (Optional)



C.M. WEBER GRANT

- Government Corner Control
 Meander Property
 Rancho Other

Date of Survey March 25, 2023

N. _____ E. _____

Elevation _____

Units Metric U.S. Survey Foot

Horizontal Datum _____

Zone _____ Epoch Date _____

Vertical Datum _____

Complies with Public Resources Code §§8801-8819

Complies with Public Resources Code §§8890-8902

PLS Act Ref.: 8765(d) 8771 8773 Other:

Corner/Monument: Left as found Established Rebuilt Pre-Construction
 Found and tagged Reestablished Referenced Post-Construction

Narrative of corner identified and monument as found, set, reset, replaced, or removed:

See sheet #2 for description(s):

THE FOUND MONUMENT(S) SHOWN ON THIS CORNER RECORD WERE FOUND IN THE APPROXIMATE RECORD LOCATION OF THE CORNER(S) ON CR 16-271 AND CR 16-413, SAN JOAQUIN COUNTY SURVEYOR'S RECORDS. I DID NOT VERIFY THE IDENTITY OR VALIDITY OF THE MONUMENT(S) FOUND AS ACTUALLY MARKING THE PROPERTY CORNER.

SURVEYOR'S STATEMENT

This Corner Record was prepared by me or under my direction in conformance with the Professional Land Surveyors' Act on September 18, 2023.

Signed [Signature] P.L.S. or R.C.E. No. 8489



COUNTY SURVEYOR'S STATEMENT

This Corner Record was received October 25, 2024

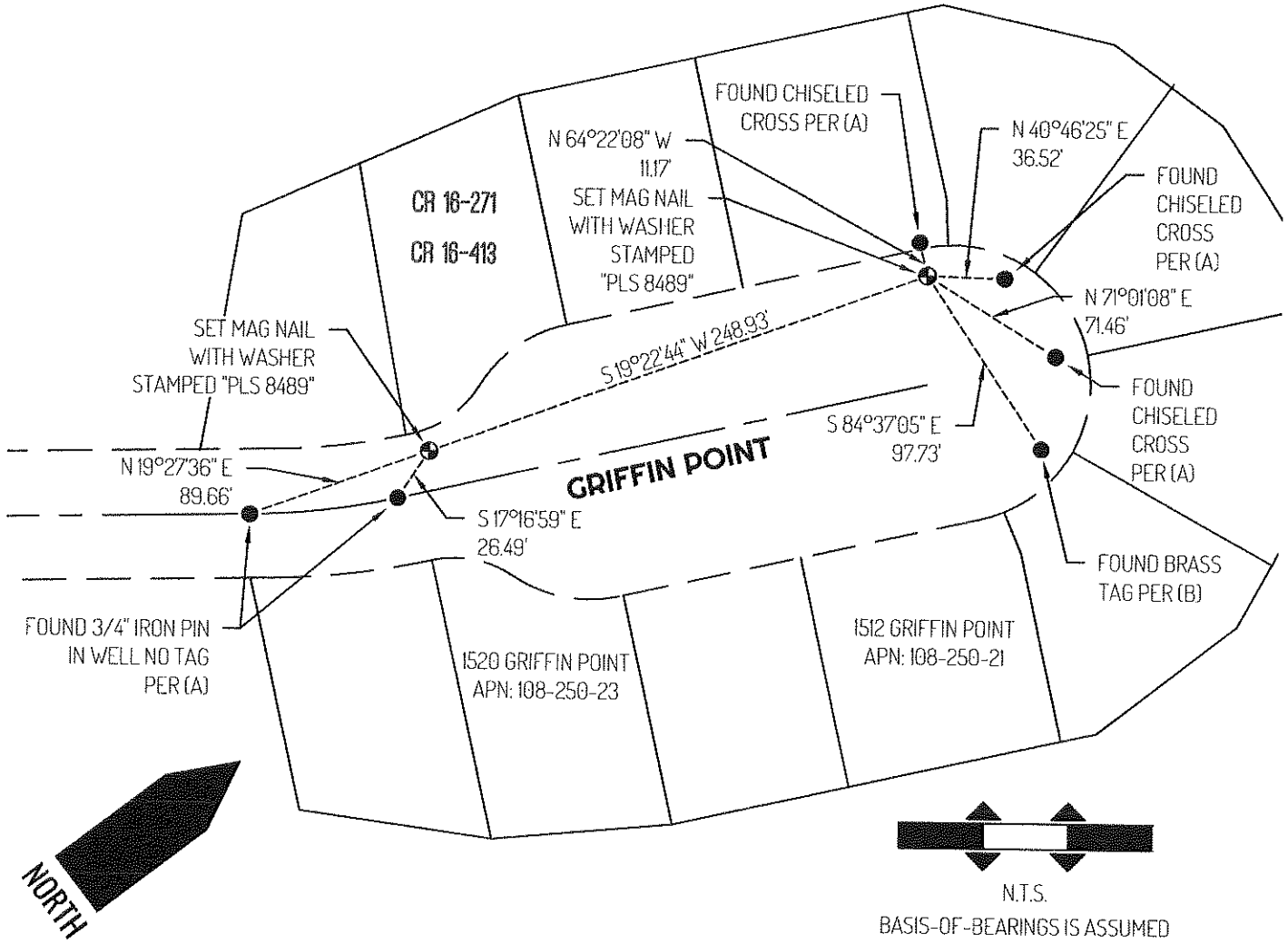
and examined and filed November 5, 2024.

Signed [Signature] P.L.S. or R.C.E. No. 8657

Title County Surveyor

County Surveyor's Comment





NORTH

N.T.S.
BASIS-OF-BEARINGS IS ASSUMED

LEGEND

- FOUND MONUMENT AS NOTED
- ⊙ SET CONTROL POINT
- 1520 REFERENCE STREET ADDRESS
- APN TAX ASSESSOR PARCEL NUMBER
- CR CORNER RECORDS, SAN JOAQUIN COUNTY SURVEYOR'S RECORDS
- TIE LINE
- _____ LOT LINE
- RIGHT-OF-WAY SIDELINE
- RIGHT-OF-WAY CENTERLINE

SURVEYOR NOTES

THIS CORNER RECORD IS BEING FILED TO FULFILL THE PRE-CONSTRUCTION MONUMENT PRESERVATION REQUIREMENTS OF SECTION 8771 OF THE CALIFORNIA BUSINESS AND PROFESSIONS CODE. IT IS NOT THE RESULT OF A FULLY RESOLVED BOUNDARY SURVEY FOR ANY PARCEL OF REAL PROPERTY.

REFERENCES

- (A) CORNER RECORD 16-271, SAN JOAQUIN COUNTY SURVEYOR'S RECORDS
- (B) CORNER RECORD 16-413, SAN JOAQUIN COUNTY SURVEYOR'S RECORDS