

CORNER RECORD

Agency Index CR-24-407
Document Number _____

City of LODI County of SAN JOAQUIN, California

Brief Legal Description FOUND 3/4" IRON ROD CAPPED RCE 19638, IN MONUMENT WELL ON CENTERLINE OF SPRINGHAVEN WAY, 181' ± WEST OF CANAL DRIVE.

CORNER TYPE

COORDINATES (Optional)



- Government Corner
- Meander
- Rancho
- Control
- Property
- Other

N. _____ E. _____
 Elevation _____
 Units Metric U.S. Survey Foot
 Horizontal Datum _____
 Zone _____ Epoch Date _____
 Vertical Datum _____
 Complies with Public Resources Code §§8801-8819
 Complies with Public Resources Code §§8890-8902

Date of Survey APRIL 03, 2024

- PLS Act Ref.: 8765(d) 8771 8773 Other:
- Corner/Monument: Left as found Established Rebuilt Pre-Construction
 Found and tagged Reestablished Referenced Post-Construction

Narrative of corner identified and monument as found, set, reset, replaced, or removed:
 See sheet #2 for description(s):

FOUND 3/4" IRON ROD CAPPED RCE 19638, IN MONUMENT WELL ON CENTERLINE OF SPRINGHAVEN WAY, 181'± WEST OF CANAL DRIVE, AS SHOWN ON MAPS AND PLATS 39 M 69, SAN JOAQUIN COUNTY RECORDS.

THIS MONUMENT HAS BEEN REFERENCED PRIOR TO CONSTRUCTION. THE TIES SHOWN HEREON ARE FOR THE PURPOSE OF PERPETUATING FOUND MONUMENTS AND NO CLAIM IS MADE TO THEIR RELATIONSHIP TO THE BOUNDARY LOCATION SHOWN HEREON.

SURVEYOR'S STATEMENT

This Corner Record was prepared by me or under my direction in conformance with the Professional Land Surveyors' Act on MAY 14, 2024.

Signed Nathaniel S. Anderson (P.L.S.) or R.C.E. No. 9667



COUNTY SURVEYOR'S STATEMENT

This Corner Record was received October 22, 2024 and examined and filed November 5, 2024.

Signed James E. Hart (P.L.S.) or R.C.E. No. 8657

Title SAN JOAQUIN COUNTY SURVEYOR



County Surveyor's Comment



23-00033-083



SCALE 1" = 10'

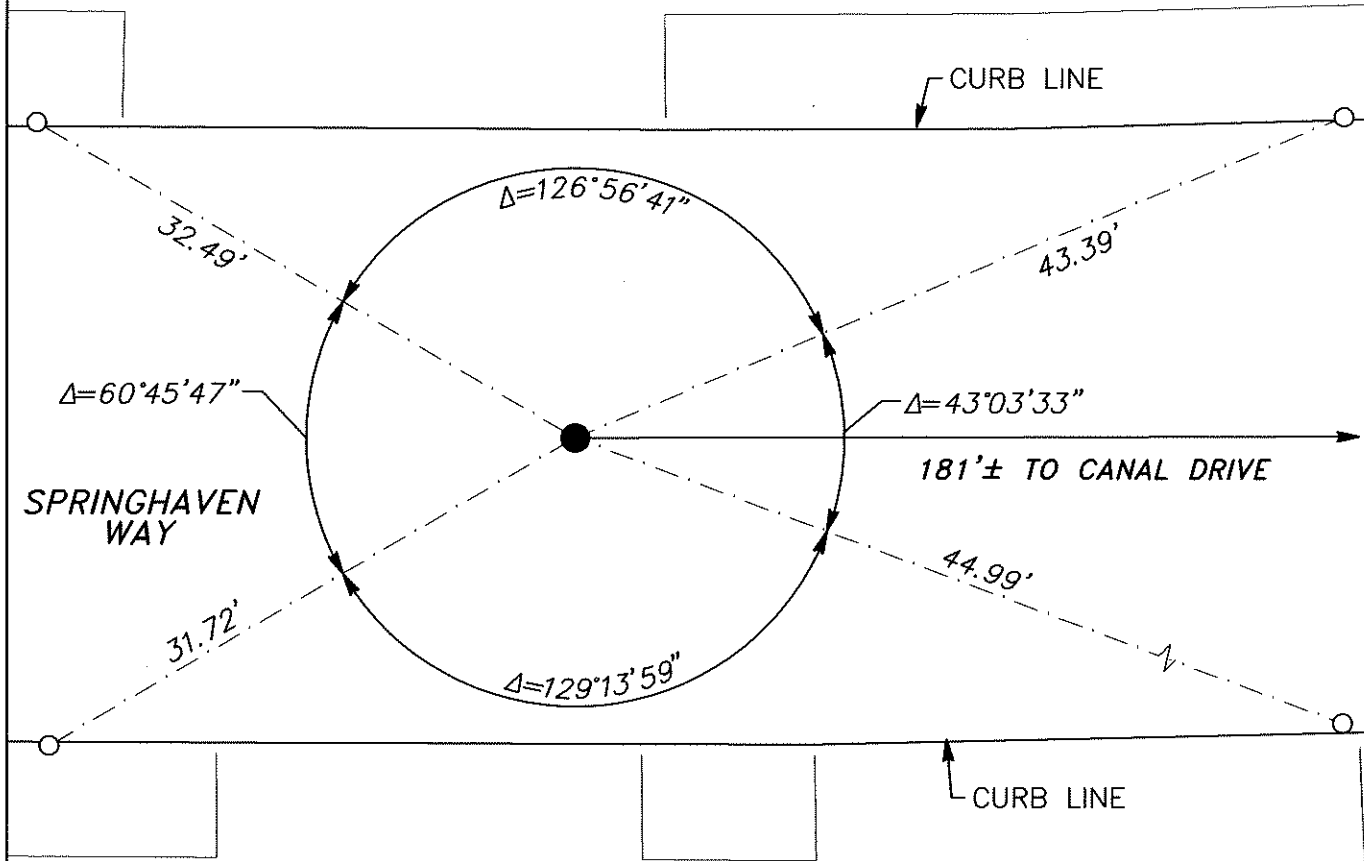


LEGEND

- APPROXIMATE LOT LINE
- - - MONUMENT TIE LINE
- FOUND 3/4" IRON ROD CAPPED RCE 19638, IN MONUMENT WELL ON CENTERLINE OF SPRINGHAVEN WAY, 181'± WEST OF CANAL DRIVE, AS SHOWN ON MAPS AND PLATS 39 M 69, SAN JOAQUIN COUNTY RECORDS.
- SET RIVET AND BRASS TAG "REF PT LS 9667" IN CONCRETE CURB.
- APN ASSESOR'S PARCEL NUMBER
- M MAPS AND PLATS, SAN JOAQUIN COUNTY RECORDS

(39 M 69)
APN: 058-580-07

CONCRETE SIDEWALK



CONCRETE SIDEWALK

1444 SPRINGHAVEN WAY
(39 M 69)
APN: 058-580-14

1438 SPRINGHAVEN WAY
(39 M 69)
APN: 058-580-15