

# CORNER RECORD

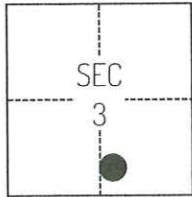
Agency Index CR-24-406  
Document Number \_\_\_\_\_

City of \_\_\_\_\_ County of SAN JOAQUIN, California

Brief Legal Description FOUND MONUMENTS EAST OF HARLAN ROAD, PER PM 16-59 S.J.C.R.

### CORNER TYPE

### COORDINATES (Optional)



C.M. WEBER GRANT

- Government Corner     Control  
 Meander                     Property  
 Rancho                          Other

Date of Survey August 3, 2023

N. \_\_\_\_\_ E. \_\_\_\_\_

Elevation \_\_\_\_\_

Units     Metric     U.S. Survey Foot

Horizontal Datum \_\_\_\_\_

Zone \_\_\_\_\_ Epoch Date \_\_\_\_\_

Vertical Datum \_\_\_\_\_

Complies with Public Resources Code §§8801-8819

Complies with Public Resources Code §§8890-8902

PLS Act Ref.:     8765(d)                     8771                     8773                     Other:

Corner/ Monument:     Left as found                     Established                     Rebuilt                     Pre-Construction

Found and tagged                     Reestablished                     Referenced                     Post-Construction

Narrative of corner identified and monument as found, set, reset, replaced, or removed:

See sheet #2 for description(s):

THE FOUND MONUMENT(S) SHOWN ON THIS CORNER RECORD WERE FOUND IN THE APPROXIMATE LOCATION OF THE CORNER(S) ON PM 16-59, SAN JOAQUIN COUNTY RECORDS. I DID NOT VERIFY THE IDENTITY AND VALIDITY OF THE MONUMENT(S) FOUND AS ACTUALLY MARKING THE PROPERTY CORNER.

### SURVEYOR'S STATEMENT

This Corner Record was prepared by me or under my direction in conformance with the Professional Land Surveyors' Act on October 15, 2023

Signed [Signature] P.L.S. or R.C.E. No. 8489



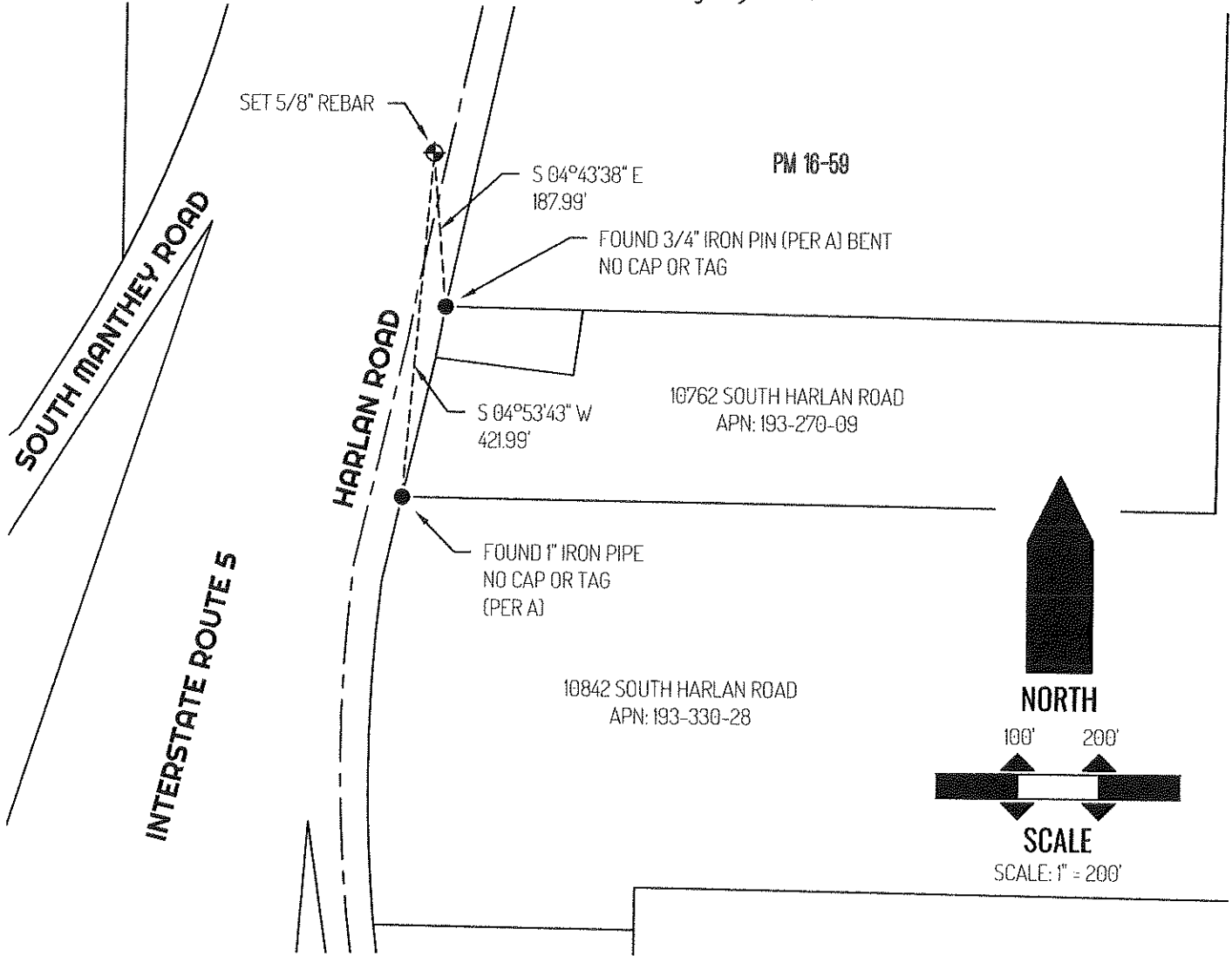
### COUNTY SURVEYOR'S STATEMENT

This Corner Record was received October 25, 2024 and examined and filed November 5, 2024

Signed James E. Hart P.L.S. or R.C.E. No. 8657  
Title County Surveyor

County Surveyor's Comment





**LEGEND**

●	FOUND MONUMENT AS NOTED
⊕	SET CONTROL POINT
10762	REFERENCE STREET ADDRESS
PM	PARCEL MAP, SAN JOAQUIN COUNTY RECORDS
APN	TAX ASSESSOR PARCEL NUMBER
---	TIE LINE
—	LOT LINE
---	RIGHT-OF-WAY CENTERLINE

**SURVEYOR NOTES**

THIS CORNER RECORD IS BEING FILED TO FULFILL THE PRE-CONSTRUCTION MONUMENT PRESERVATION REQUIREMENTS OF SECTION 8771 OF THE CALIFORNIA BUSINESS AND PROFESSIONS CODE. IT IS NOT THE RESULT OF A FULLY RESOLVED BOUNDARY SURVEY FOR ANY PARCEL OF REAL PROPERTY.

**REFERENCE**

(A) PARCEL MAP BOOK 16, AT PAGE 59, SAN JOAQUIN COUNTY RECORDS