

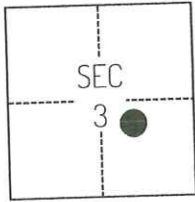
CORNER RECORD

Agency Index CR-24-405
Document Number _____

City of _____ County of SAN JOAQUIN, California
Brief Legal Description FOUND MONUMENTS EAST OF HARLAN ROAD, PER RS 40-35 S.J.C.R.

CORNER TYPE

COORDINATES (Optional)



C.M. WEBER GRANT

- Government Corner
- Meander
- Rancho
- Control
- Property
- Other

Date of Survey August 3, 2023

N. _____ E. _____
 Elevation _____
 Units Metric U.S. Survey Foot
 Horizontal Datum _____
 Zone _____ Epoch Date _____
 Vertical Datum _____
 Complies with Public Resources Code §§8801-8819
 Complies with Public Resources Code §§8890-8902

- PLS Act Ref.: 8765(d) 8771 8773 Other:
- Corner/Monument: Left as found Established Rebuilt Pre-Construction
 Found and tagged Reestablished Referenced Post-Construction

Narrative of corner identified and monument as found, set, reset, replaced, or removed:
 See sheet #2 for description(s):

THE FOUND MONUMENT(S) SHOWN ON THIS CORNER RECORD WERE FOUND IN THE APPROXIMATE LOCATION OF THE CORNER(S) ON RS 40-35, SAN JOAQUIN COUNTY RECORDS. I DID NOT VERIFY THE IDENTITY AND VALIDITY OF THE MONUMENT(S) FOUND AS ACTUALLY MARKING THE PROPERTY CORNER.

SURVEYOR'S STATEMENT

This Corner Record was prepared by me or under my direction in conformance with
 the Professional Land Surveyors' Act on October 15, 2023
 Signed [Signature] P.L.S. or R.C.E. No. 8489



COUNTY SURVEYOR'S STATEMENT

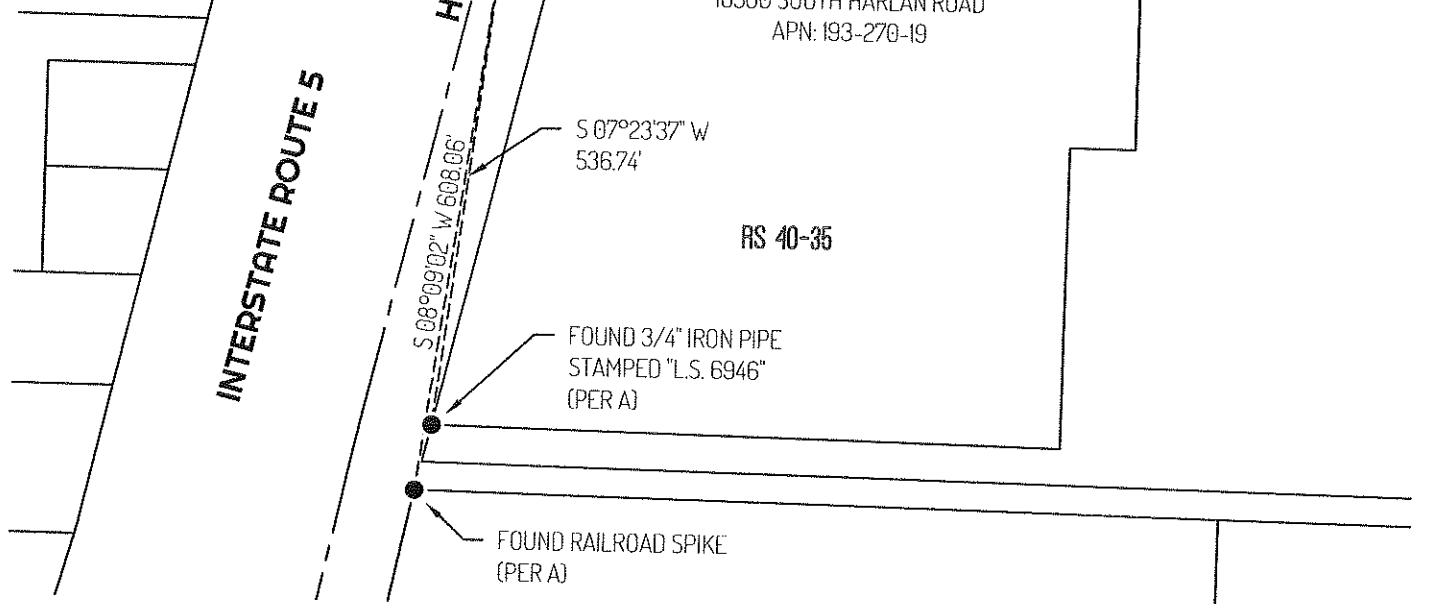
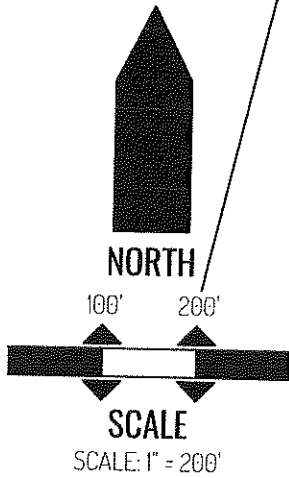
This Corner Record was received October 25, 2024
 and examined and filed November 5, 2024
 Signed James E. Hart P.L.S. or R.C.E. No. 8657
 Title County Surveyor



County Surveyor's Comment

Document Number

Agency Index



LEGEND

SURVEYOR NOTES

- FOUND MONUMENT AS NOTED
- ⊕ SET CONTROL POINT
- 10500 REFERENCE STREET ADDRESS
- RS RECORD OF SURVEY, SAN JOAQUIN COUNTY RECORDS
- APN TAX ASSESSOR PARCEL NUMBER
- TIE LINE
- ___ LOT LINE
- RIGHT-OF-WAY CENTERLINE

THIS CORNER RECORD IS BEING FILED TO FULFILL THE PRE-CONSTRUCTION MONUMENT PRESERVATION REQUIREMENTS OF SECTION 8771 OF THE CALIFORNIA BUSINESS AND PROFESSIONS CODE. IT IS NOT THE RESULT OF A FULLY RESOLVED BOUNDARY SURVEY FOR ANY PARCEL OF REAL PROPERTY.

REFERENCE

(A) RECORD OF SURVEY BOOK 40, AT PAGE 35, SAN JOAQUIN COUNTY RECORDS