

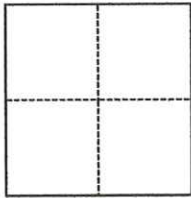
CORNER RECORD

Agency Index CR-24-399
Document Number _____

City of _____ County of SAN JOAQUIN, California
Brief Legal Description PORTION OF R.S. 21-112, S.J.C.R.

CORNER TYPE

COORDINATES (Optional)



- Government Corner
- Meander
- Rancho
- Control
- Property
- Other

N. _____ E. _____
 Elevation _____
 Units Metric U.S. Survey Foot
 Horizontal Datum _____
 Zone _____ Epoch Date _____
 Vertical Datum _____
 Complies with Public Resources Code §§8801-8819
 Complies with Public Resources Code §§8890-8902

Date of Survey September 19, 2024

PLS Act Ref.: 8765(d) 8771 8773 Other:
 Corner/Monument: Left as found Established Rebuilt Pre-Construction
 Found and tagged Reestablished Referenced Post-Construction

Narrative of corner identified and monument as found, set, reset, replaced, or removed:
 See sheet #2 for description(s):

SEE SHEET 2 OF 2 FOR MONUMENTS FOUND AND SET.

SURVEYOR'S STATEMENT

This Corner Record was prepared by me or under my direction in conformance with
 the Professional Land Surveyors' Act on 10/21/2024
 Signed Walter John Shoup P.L.S. or R.C.E. No. L-7736



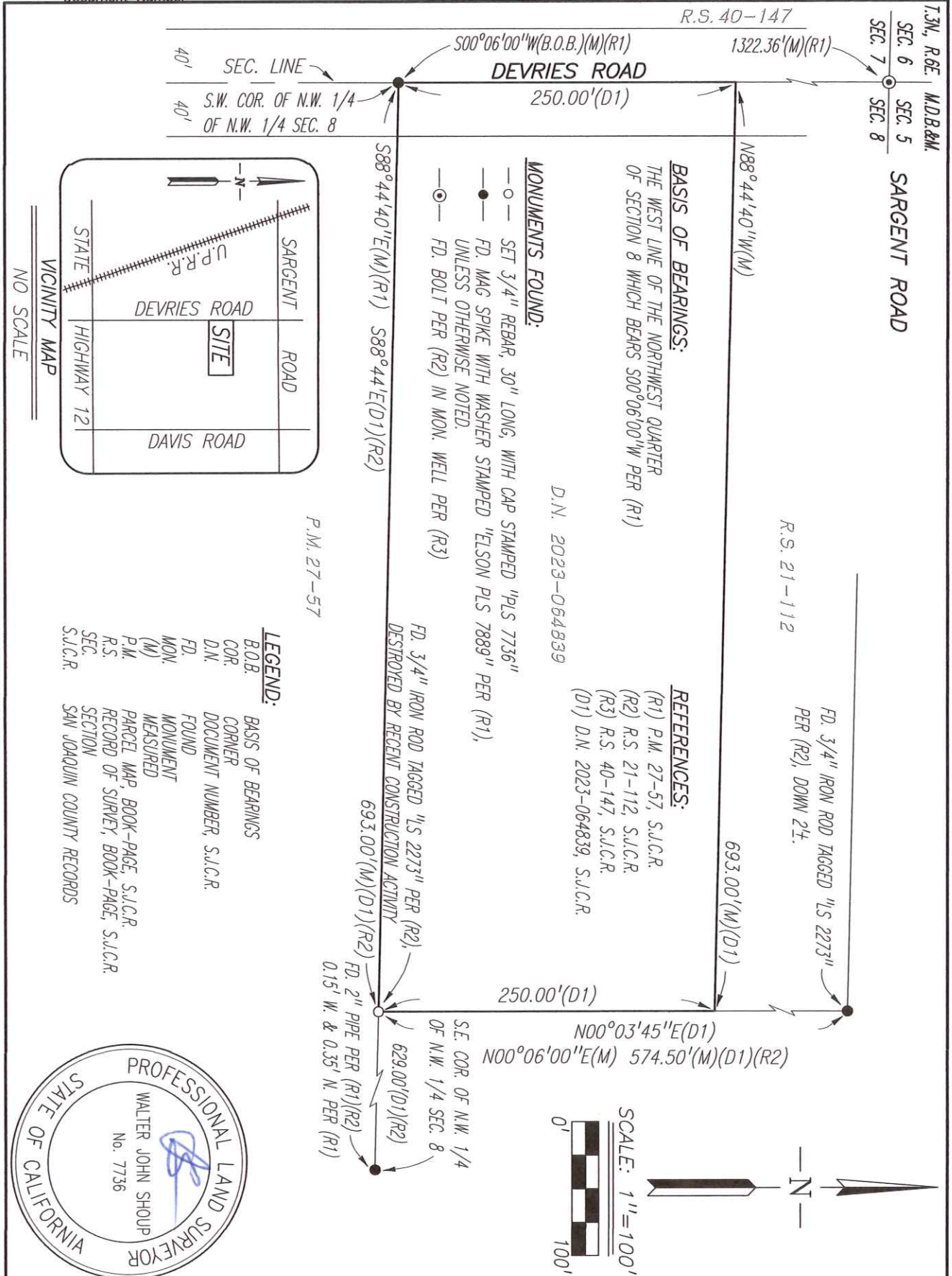
COUNTY SURVEYOR'S STATEMENT

This Corner Record was received October 22, 2024
 and examined and filed November 4, 2024
 Signed James E. Hart P.L.S. or R.C.E. No. 8657
 Title County Surveyor



County Surveyor's Comment

R.S. 40-147



Scale: 1"=100'
Job No.: 23-126

CORNER RECORD
EXHIBIT MAP

Date: 10/17/2024
DWG: 23126CR.DWG

