

CORNER RECORD

Agency Index CR-24-394

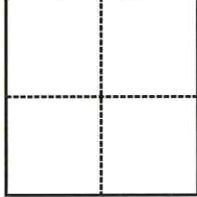
Document Number _____

City of LODI County of SAN JOAQUIN, California

Brief Legal Description FOUND 1/2" IRON ROD 0.3' BELOW DIRT NEAR BACK OF SIDEWALK ON NORTH SIDE OF TOKAY ST APPROXIMATELY 145' WEST OF LEE AVE (13 M 105)

CORNER TYPE

COORDINATES (Optional)



- Government Corner
- Meander
- Rancho
- Control
- Property
- Other

N. _____ E. _____

Elevation _____

Units Metric U.S. Survey Foot

Horizontal Datum _____

Zone _____ Epoch Date _____

Vertical Datum _____

Complies with Public Resources Code §§8801-8819

Complies with Public Resources Code §§8890-8902

PLS Act Ref.: 8765(d) 8771 8773 Other:

Corner/Monument: Left as found Established Rebuilt Pre-Construction

Found and tagged Reestablished Referenced Post-Construction

Narrative of corner identified and monument as found, set, reset, replaced, or removed:

See sheet #2 for description(s):

FOUND 1/2" IRON ROD 0.3' BELOW DIRT, NEAR BACK OF SIDEWALK ALONG NORTH SIDE OF TOKAY STREET APPROXIMATELY 145' WEST OF LEE AVE PER (13 M 105), SAN JOAQUIN COUNTY RECORDS.

THIS MONUMENT HAS BEEN REFERENCED PRIOR TO CONSTRUCTION. THE TIES SHOWN HEREON ARE FOR THE PURPOSE OF PERPETUATING FOUND MONUMENTS AND NO CLAIM IS MADE TO THEIR RELATIONSHIP TO THE BOUNDARY LOCATION SHOWN HEREON.

SURVEYOR'S STATEMENT

This Corner Record was prepared by me or under my direction in conformance with the Professional Land Surveyors' Act on MARCH 19, 2024.
Signed Nathaniel S. Anderson (P.L.S. or R.C.E. No. 9667)



COUNTY SURVEYOR'S STATEMENT

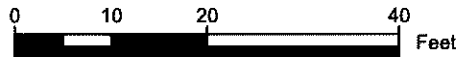
This Corner Record was received October 16, 2024 and examined and filed October 25, 2024.
Signed James E. Hart (P.L.S. or R.C.E. No. 8657)
Title SAN JOAQUIN COUNTY SURVEYOR



County Surveyor's Comment



23-00033-064

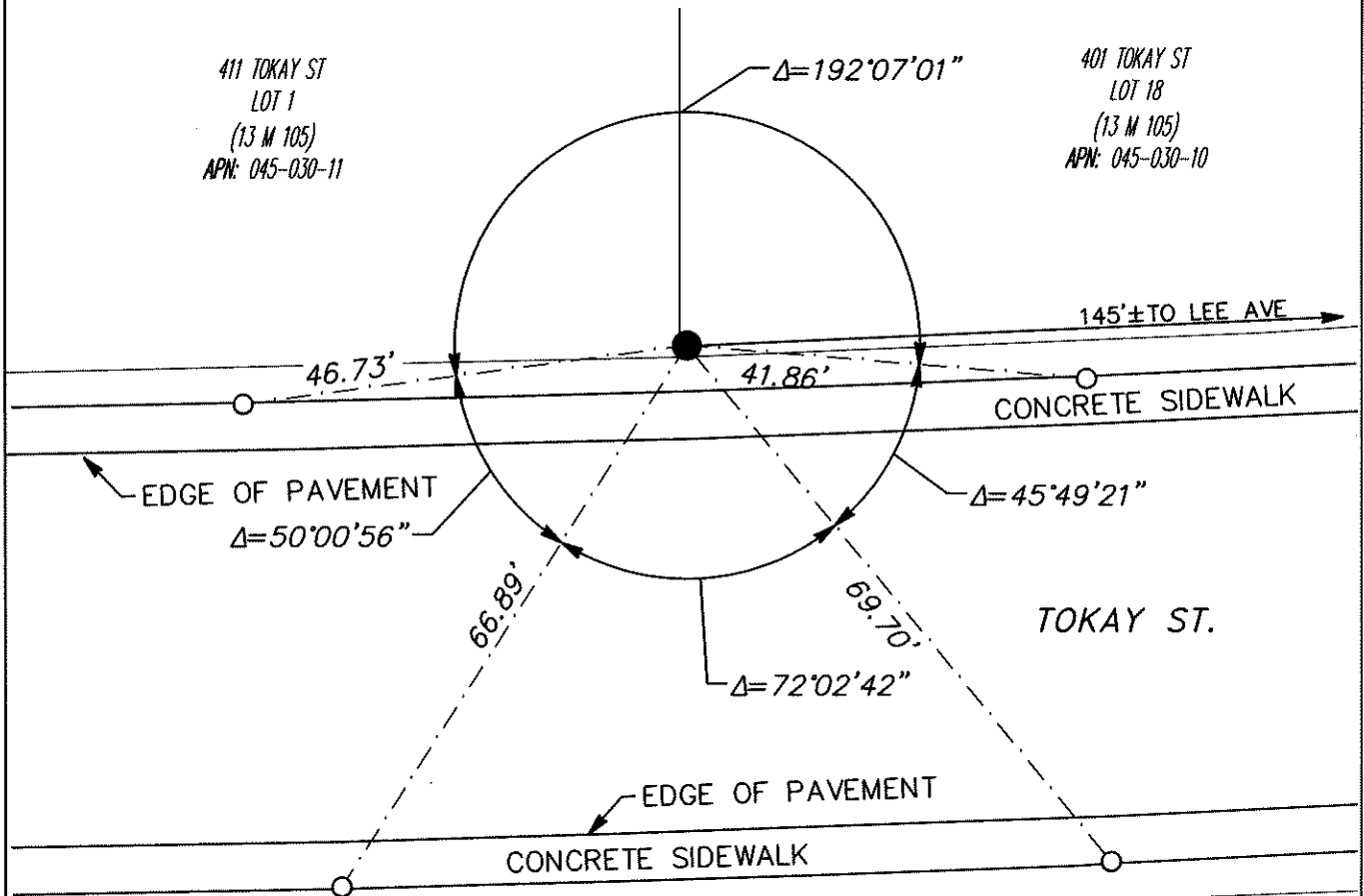


SCALE 1" = 20'



LEGEND

- APPROXIMATE LOT LINE
- - - MONUMENT TIE LINE
- FOUND 1/2" IRON ROD 0.3' BELOW DIRT NEAR BACK OF SIDEWALK ON NORTH SIDE OF TOKAY ST APPROXIMATELY 145' WEST OF LEE AVE (13 M 105)
- SET RIVET AND BRASS TAG "REF PT LS 9667" IN CONCRETE SIDEWALK.
- M MAPS & PLATS, SAN JOAQUIN COUNTY RECORDS
- APN ASSESSOR PARCEL NUMBER



411 TOKAY ST
 LOT 1
 (13 M 105)
 APN: 045-030-11

401 TOKAY ST
 LOT 18
 (13 M 105)
 APN: 045-030-10

408 TOKAY ST
 LOT 1
 (13 M 090)
 APN: 045-050-01

400 TOKAY ST
 LOT 16
 (13 M 090)
 APN: 045-050-02