

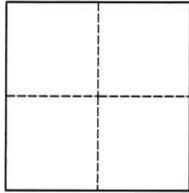
CORNER RECORD

Agency Index CR-24-393

Document Number _____

City of Manteca County of San Joaquin, California

Brief Legal Description Centerlines of Waterfall Way & Airport Way, Section 36, T,1S., R,6E.



CORNER TYPE

Government Corner Control
Meander Property
Rancho Other

Date of Survey August 29, 2024

COORDINATES (Optional)

N. _____ E. _____

Elevation _____

Units Metric U.S. Survey Foot

Horizontal Datum _____

Zone _____ Epoch Date _____

Vertical Datum _____

Complies with Public Resources Code §§8801-8819

Complies with Public Resources Code §§8890-8902

PLS Act Ref.: 8765(d) 8771 8773 Other:

Corner/Monument: Left as found Established Rebuilt Pre-Construction
 Found and tagged Reestablished Referenced Post-Construction

Narrative of corner identified and monument as found, set, reset, replaced, or removed:

See sheet #2 for description(s):

SURVEYOR'S STATEMENT

This Corner Record was prepared by me or under my direction in conformance with

the Professional Land Surveyors' Act on August 29, 2024

Signed Douglas F. Banks P.L.S. or R.C.E. No. 8159



COUNTY SURVEYOR'S STATEMENT

This Corner Record was received September 20, 2024

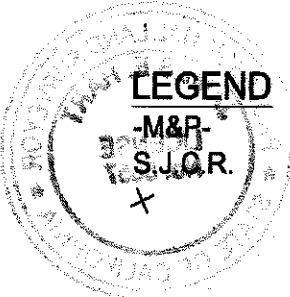
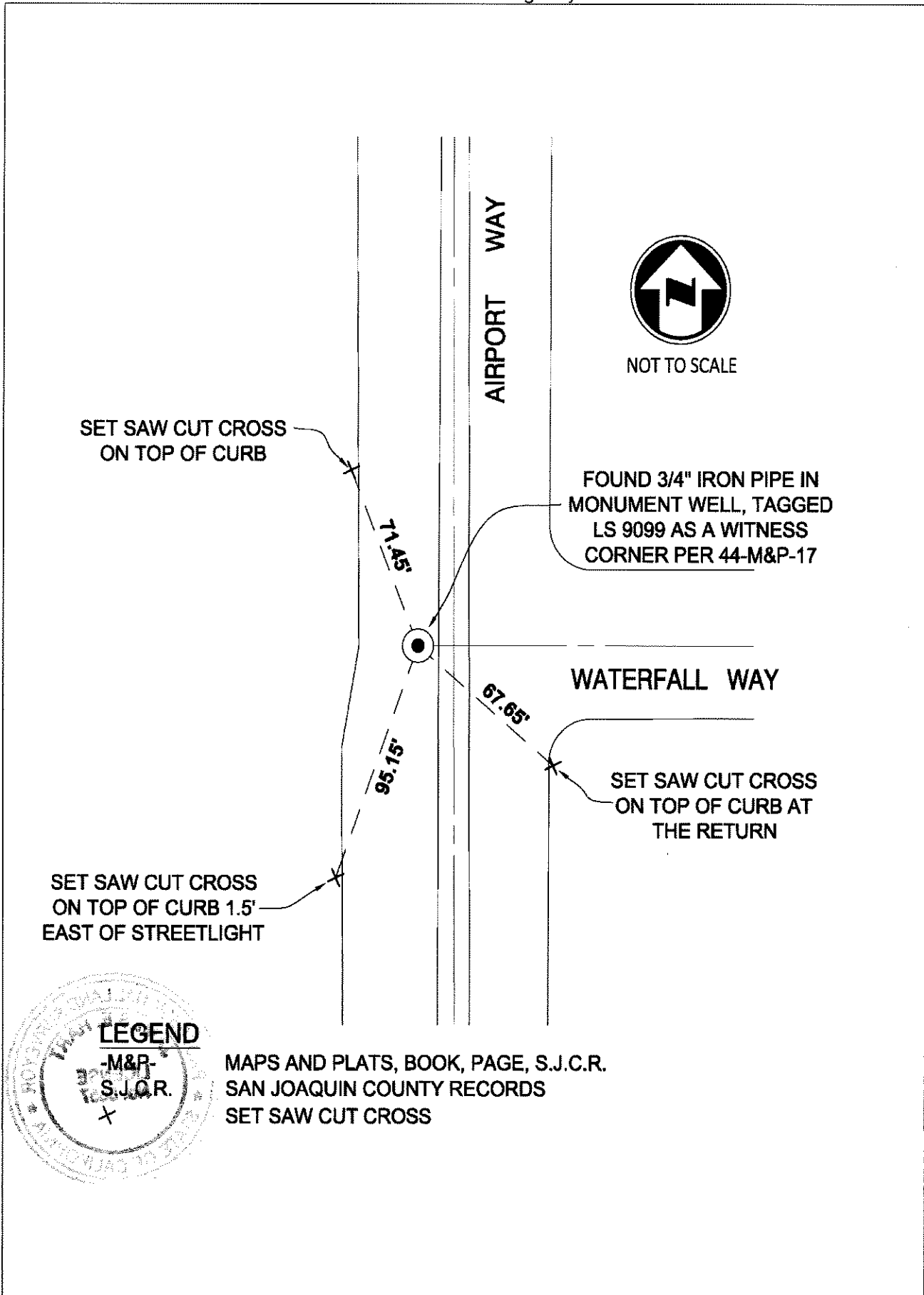
and examined and filed October 10, 2024

Signed James E. Hart P.L.S. or R.C.E. No. 8657

Title County Surveyor

County Surveyor's Comment





MAPS AND PLATS, BOOK, PAGE, S.J.C.R.
 SAN JOAQUIN COUNTY RECORDS
 SET SAW CUT CROSS