

# CORNER RECORD

Agency Index CR-24-382

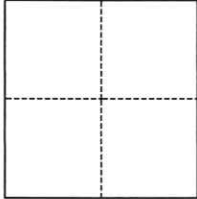
Document Number \_\_\_\_\_

City of \_\_\_\_\_ County of San Joaquin, California

Brief Legal Description A Portion of the S.E. 1/4 Section 21, T.2 N., R.8 E.

### CORNER TYPE

### COORDINATES (Optional)



- Government Corner
- Meander
- Rancho
- Control
- Property
- Other

Date of Survey May 28, 2024

N. \_\_\_\_\_ E. \_\_\_\_\_

Elevation \_\_\_\_\_

Units  Metric  U.S. Survey Foot

Horizontal Datum \_\_\_\_\_

Zone \_\_\_\_\_ Epoch Date \_\_\_\_\_

Vertical Datum \_\_\_\_\_

Complies with Public Resources Code §§8801-8819

Complies with Public Resources Code §§8890-8902

PLS Act Ref.:  8765(d)  8771  8773  Other:

Corner/Monument:  Left as found  Established  Rebuilt  Pre-Construction

Found and tagged  Reestablished  Referenced  Post-Construction

Narrative of corner identified and monument as found, set, reset, replaced, or removed:

See sheet #2 for description(s):

### SURVEYOR'S STATEMENT

This Corner Record was prepared by me or under my direction in conformance with

the Professional Land Surveyors' Act on July 1, 2024

Signed [Signature] P.L.S. or R.C.E. No. PLS 7889



### COUNTY SURVEYOR'S STATEMENT

This Corner Record was received October 9, 2024

and examined and filed October 24, 2024

Signed James E. Hart P.L.S. or R.C.E. No. 8657

Title County Surveyor

County Surveyor's Comment

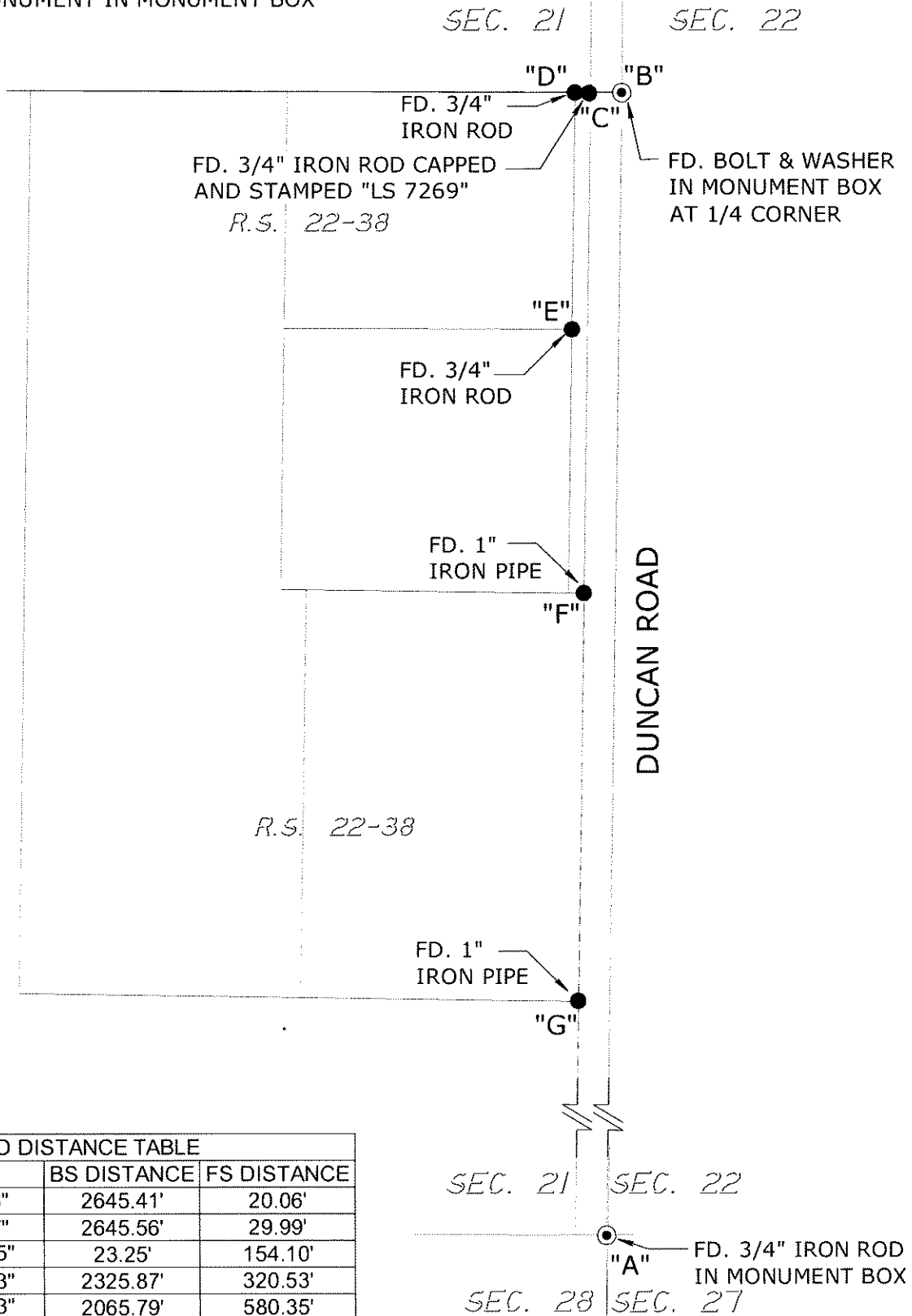


**LEGEND:**

- R.S. RECORD OF SURVEY, BOOK AND PAGE,
- SAN JOAQUIN COUNTY RECORDS
- SEC. SECTION
- S.J.CO. SAN JOAQUIN COUNTY
- FD. FOUND
- FOUND MONUMENT AS NOTED
- ⊙ FOUND MONUMENT IN MONUMENT BOX AS NOTED

**DESCRIPTION:**

THIS CORNER RECORD IS FOR THE PURPOSE OF MONUMENT PRESERVATION. REFERENCES WERE SET FOR FOUND MONUMENTS AS NOTED ON DIAGRAM. NO BOUNDARY ANALYSIS WAS PERFORMED. THIS CORNER RECORD DOES NOT VERIFY THE MONUMENT(S) TO BE IN THE CORRECT POSITION.



NOT TO SCALE

ANGLE AND DISTANCE TABLE

BS-O-FS	ANGLE	BS DISTANCE	FS DISTANCE
A-C-B	90°35'46"	2645.41'	20.06'
A-D-B	89°55'57"	2645.56'	29.99'
A-E-B	168°09'35"	23.25'	154.10'
A-F-B	175°55'53"	2325.87'	320.53'
A-G-B	177°27'33"	2065.79'	580.35'