

CORNER RECORD

Agency Index CR-24-381

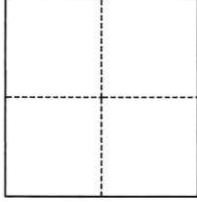
Document Number _____

City of _____ County of San Joaquin, California

Brief Legal Description Parcels 1 and 2, R.S. 40-77

CORNER TYPE

COORDINATES (Optional)



- Government Corner
- Meander
- Rancho
- Control
- Property
- Other

N. _____ E. _____
 Elevation _____
 Units Metric U.S. Survey Foot
 Horizontal Datum _____
 Zone _____ Epoch Date _____
 Vertical Datum _____
 Complies with Public Resources Code §§8801-8819
 Complies with Public Resources Code §§8890-8902

Date of Survey May 28, 2024

- PLS Act Ref.: 8765(d) 8771 8773 Other:
- Corner/Monument: Left as found Established Rebuilt Pre-Construction
 Found and tagged Reestablished Referenced Post-Construction

Narrative of corner identified and monument as found, set, reset, replaced, or removed:
 See sheet #2 for description(s):

SURVEYOR'S STATEMENT

This Corner Record was prepared by me or under my direction in conformance with
 the Professional Land Surveyors' Act on July 1, 2024
 Signed [Signature] P.L.S. or R.C.E. No. PLS 7889



COUNTY SURVEYOR'S STATEMENT

This Corner Record was received October 9, 2024
 and examined and filed October 24, 2024
 Signed James E Hart P.L.S. or R.C.E. No. 8657
 Title County Surveyor



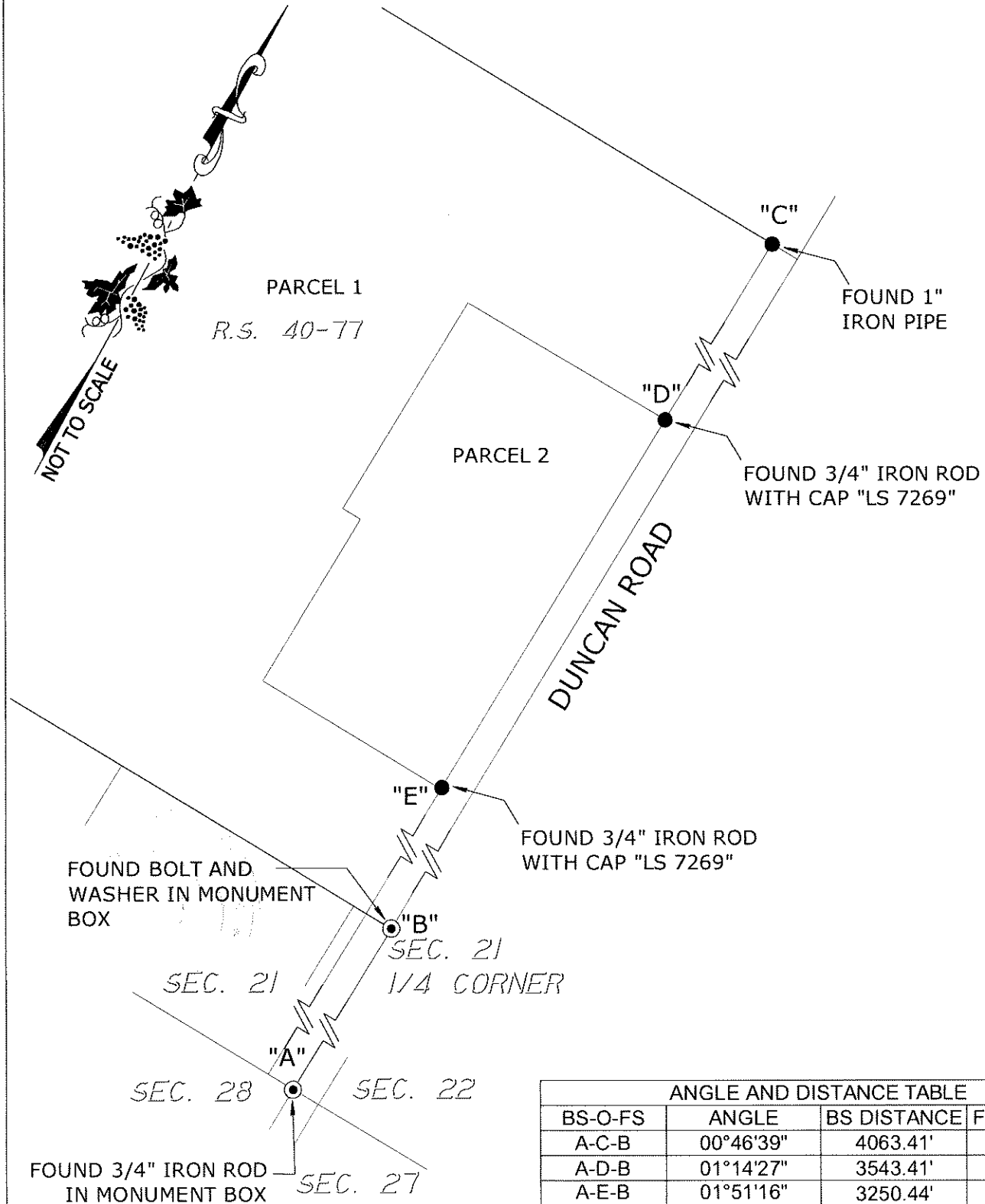
County Surveyor's Comment

LEGEND:

- R.S. RECORD OF SURVEY, BOOK AND PAGE, SAN JOAQUIN COUNTY RECORDS
- SEC. SECTION
- FOUND MONUMENT AS NOTED
- ⊙ FOUND MONUMENT IN MONUMENT BOX AS NOTED

DESCRIPTION:

THIS CORNER RECORD IS FOR THE PURPOSE OF MONUMENT PRESERVATION. REFERENCES WERE SET FOR FOUND MONUMENTS AS NOTED ON DIAGRAM. NO BOUNDARY ANALYSIS WAS PERFORMED. THIS CORNER RECORD DOES NOT VERIFY THE MONUMENT(S) TO BE IN THE CORRECT POSITION.



S:\Projects\2024\24015\3 Drawings\24015 CR.dwg 08/26/24 3:47pm CARTER XREES 24015 BS.dwg

ANGLE AND DISTANCE TABLE			
BS-O-FS	ANGLE	BS DISTANCE	FS DISTANCE
A-C-B	00°46'39"	4063.41'	1417.92'
A-D-B	01°14'27"	3543.41'	898.00'
A-E-B	01°51'16"	3250.44'	605.14'